



The background features abstract geometric shapes in orange, yellow, and pink. An orange triangle is in the top-left corner. A yellow square is in the bottom-left corner. A pink circle is in the bottom-right corner. A pink triangle is in the top-right corner.

# **primitive shapes**

**ntu design industries 2023**



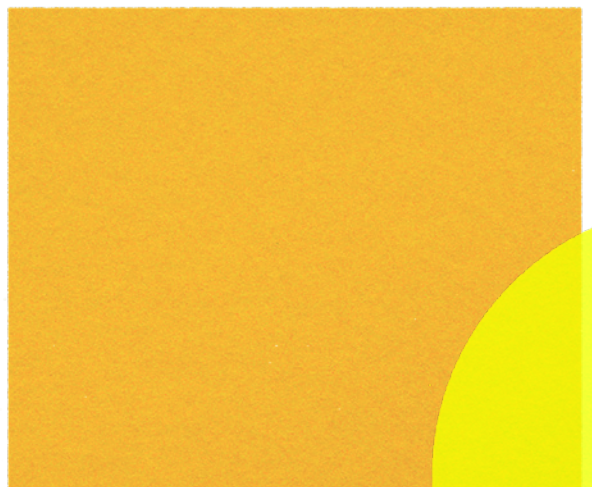
Just as education forms the foundations of our unique and diverse paths, primitive shapes provide the base of complex forms.

Like primitive shapes we too evolve: Through learning we grow and mould into new structures; Like Boolean operations we combine through collaboration; And through sharing knowledge we divide, giving others the chance to develop from our experiences.

We've grown resilience through university, building the foundations we need to stamp our authority and inspire our industry.

We all start as primitive shapes.

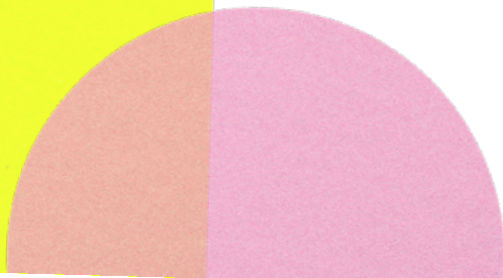
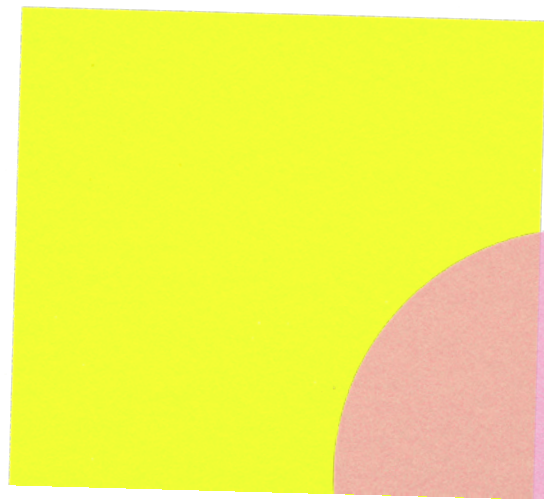






# contents

<b>Foreword</b>	<b>7</b>
<b>BA (Hons) Product Design</b>	<b>10</b>
<b>Thank You</b>	<b>157</b>
<b>Credits</b>	<b>158</b>





**James Dale**

Head of Product Design

We have spent a great deal of time in the Product Design department this year experimenting with the use of Artificial Intelligence (AI) software as a creative tool, to enable our design students to explore ideas and approaches to their work that they may have never normally considered. Rather than some of the kneejerk negative reactions to the use of AI in higher education, our approach has been to experiment, test and prototype the technology, to see what it can achieve and to try and understand the limitations and challenges that this new technology represents.

So far, the opportunities that AI offers are fascinating, but the core to how we engage with this technology, ensuring that our students can curate and evaluate the information with an open mind and a critical eye while clearly referencing the input and role that the AI has played in the creation of our products. But rather than stand on the beach calling on the next wave to turn back, we need to accept that change is here, evolve and move forward positively.

With that in mind, I asked OpenAI.com to suggest an inspirational forward to this year's Product Design brochure; it offered up a twenty-year-old quote from Steve Jobs talking about the iPod (remember that!) and the sort of glowing platitudes you have probably come to expect from my introductions to brochures like these over the years (which may well have been drawn upon by the AI in order to write its own version).

So instead, I will simply say that we are here today to honour the 'actual intelligence' of these supremely creative, passionate, design graduates and their dedication, hard work and good humour; it has been a pleasure working with you, and for you. As a department we wish you all the best in your future careers – remember to keep it real (even when some of it may be unreal).

Jim







# **BA (Hons) Product Design**

Our BA (Hons) Product Design course at Nottingham Trent University concentrates on the design of innovative products, systems and services including consumer goods, electronic gadgets, sustainable products, sports and healthcare equipment, packaging and transportation.



**Grant Baker**  
Course Leader, Product  
Design BA (Hons)

As you approach the end of your time at NTU, I want to take a moment to offer my congratulations on your incredible achievements. Your hard work, creativity and dedication to your studies has been impressive and for this you should be immensely proud.

Your time at Nottingham Trent University has been truly unique, filled with both triumphs and challenges and as you begin to plan for your future, I encourage you to reflect on these experiences, taking a moment to appreciate how far you have come. Throughout your studies, you have had some truly fantastic opportunities - from live briefs alongside inspirational industry partners to participating in inspirational taught sessions that have developed your skill sets and prepared you for success in your future careers.

However, as you reflect on your time here, I believe that the most important opportunity you've had is the privilege of meeting your peers (staff included) - a fantastic group of creatives who have been there to offer thoughts, encouragement, and friendship throughout your studies.

As you embark on the next stage of your journey in the creative industries, I hope that this collaborative spirit continues. You have formed invaluable connections here at NTU and I hope that you will continue to draw upon these relationships as you navigate the challenges and opportunities that lie ahead.

To the student cohort of 2023, it has been a privilege to be part of your time here at NTU. I wish you all the very best in your future endeavours. I have no doubt that you will go on to achieve great things

## Class of 2023 - BA (Hons) Product Design



Simeon Adesoji



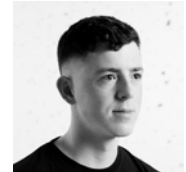
Harry  
Ainscough



Thomas Bee



Jack Bentley



Charlie  
Beresford



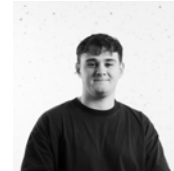
Daniel Boateng



Carl Bobbett



Ollie Bowles



Oliver Branson



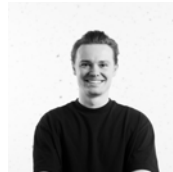
Josh Casling



Michael Chan



Heidi Claridge



Cameron Clark



Lucas Culff



Chloe Davies





Thomas  
Dickinson



Jonny Douglas



Louisa Flood



Lucy Foster



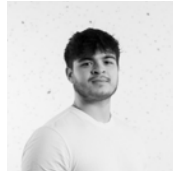
Jonathan Gan



Meghan  
Geraghty



Rachel  
Glinsman



LJ Green



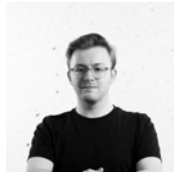
Eloise Hardy



Madalyn  
Harkus



Maya  
Heathcote



George Hill



Ed Howe



Arshiya Jain



Jamie Jim

## Class of 2023 - BA (Hons) Product Design



Sam Johnson



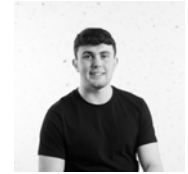
Ewan Johnston



Harshil Kothari



Eunice Kwok



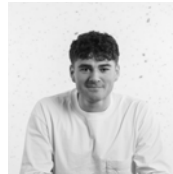
Joe Ladbury



Max Mihill



Kawai Lam



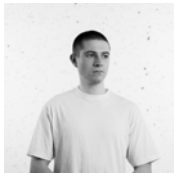
Fred Martin



Francis  
McDonald



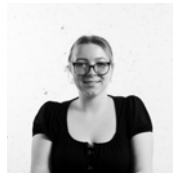
Manaz Nariman



Joss Nichols



Harry  
Nightingale



Oonagh  
O'Regan



Olivia Ottley



Josh Packham



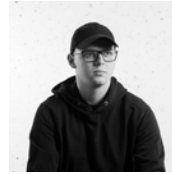
Oscar  
Pangbourne



Max Parker



Patricija Pažus



Jake Pearson



James Peskin



Amalia Phillips



Anya Pivcuka



Holly Preece



George Preston



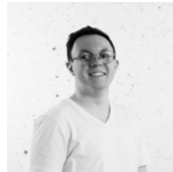
Jenny Pritchett



Michael  
Puleston



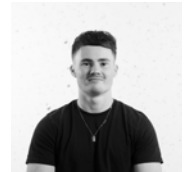
Sara Roberts



Aaron  
Robinson

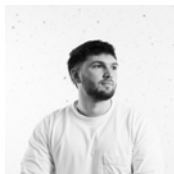


Samuel  
Robinson



Ben Roworth

## Class of 2023 - BA (Hons) Product Design



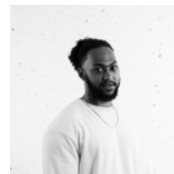
Eden Russell



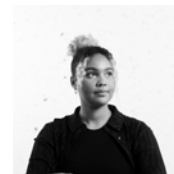
Maitri Shah



Henry Smith



Montel Smith



Rhianna Smith



Owen Spillett



Archie Stevens



Josh Stinson



Wiktoria  
Sulkowska



Rio Tsui



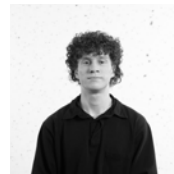
Joe Turton



Sejal Vachher



Isabel Ward



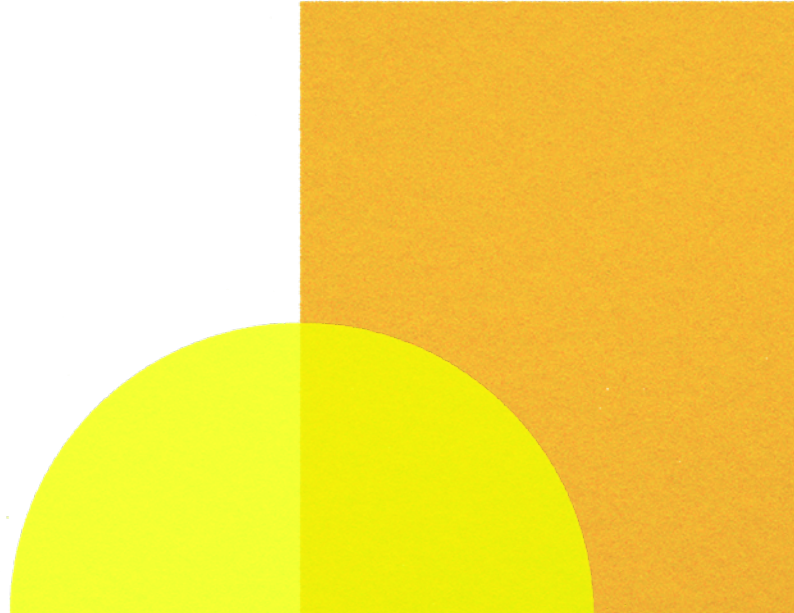
Fin Wells



Issac Whalley



Mei Yin Wong



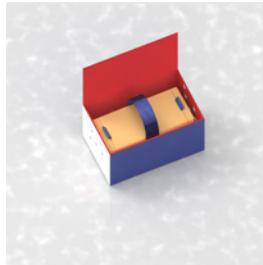
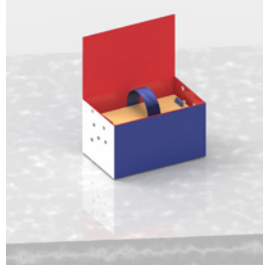
## Simeon Adesoji



From an early age I had visions of becoming a designer. Whilst displaying creativity and innovation through my designs, I continue to explore the world of new opportunities. And with each new experience comes new skills.

[simeon.adesoji@gmail.com](mailto:simeon.adesoji@gmail.com)  
[linkedin.com/in/simeon-adesoji-sa/](https://www.linkedin.com/in/simeon-adesoji-sa/)

## Vibe



Vibe is a sustainable Bluetooth portable speaker that is made to be used in the kitchen and around the home. It uses sustainable materials such as pinewood and canvas, and also has removable speaker grills at either end, allowing customers to easily replace broken parts.

## Bio-light



With the purpose to reduce environmental impact and waste, this shoe was designed as a biodegradable piece, decomposing at the end of its life cycle when disposed of.





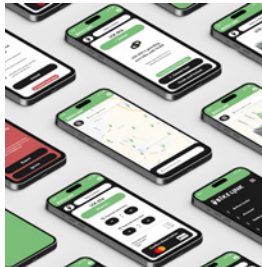
## Harry Ainscough



I aim to use my creative skills to design products which improve the lives of those who use them, through evoking positive emotions and the use of clever, innovative ideas.

Hainscough16@gmail.com  
@hains.design  
[linkedin.com/in/harryainscough](https://www.linkedin.com/in/harryainscough)

## BikeLink



BikeLink is a solution to the challenging problem of e-bike theft in the UK. Utilising a high-security lock, chain, and built-in alarm linking directly to your phone, BikeLink aims to help the UK see bikes as a more viable form of transport in urban areas.



## Panad Floor Light



The Panad floor light aims to bring a hand crafted feel back into the modern home. Taking inspiration from Welsh basketry, the shade is woven by hand from black maul willow. By flipping the shade, the light can cloak the room in web-like shadows, or create a warm, cosy environment.



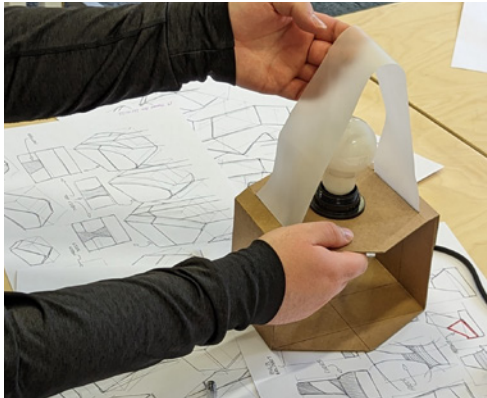
## Thomas Bee



In 1938 Arthur Askey sang “what a wonderful thing to be” about bees, but I think it rings true today for designers. We have the ability to have a profound impact on peoples’ lives, to create something out of nothing, and to balance our moral obligations. That’s why I design.

tbee.design  
@tbeedesign

## Voi Lamp



Voi is a table-top lamp designed to balance the need for sustainability with the need for individuality. It achieves this by focusing on pairing simplicity, modularity, and reparability; and by ensuring the customer makes choices about their products and associated purchases.



## Jack Bentley



I have a keen interest in the technical aspects of design, as well as creating engaging visuals. With a passion for CAD, particularly 3D modelling, I strive to develop unique products, which solve problems and provide positive user experiences.

[jcbentley@hotmail.co.uk](mailto:jcbentley@hotmail.co.uk)  
[jackbentley\\_design](mailto:jackbentley_design)  
[linkedin.com/in/jackbentley-design](https://www.linkedin.com/in/jackbentley-design)

## UGLI



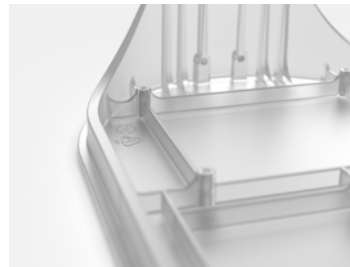
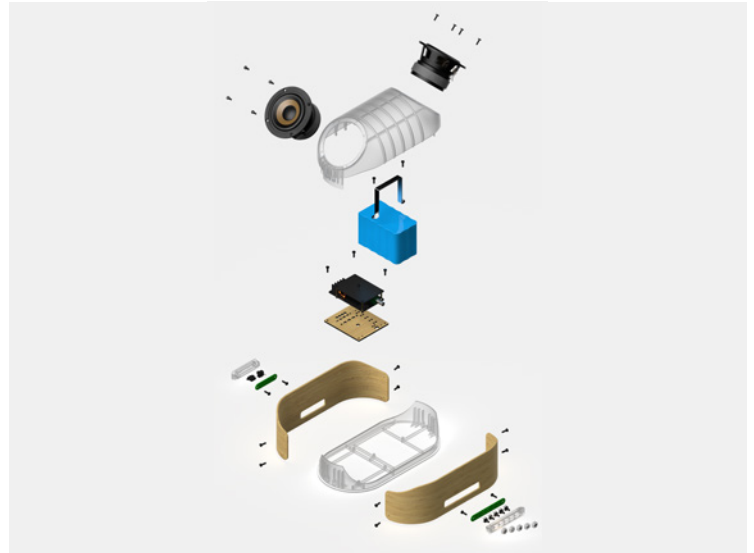
The UGLI modular shelving system aims to maximise the available worktop space available in cramped, messy, poorly designed student kitchens. The push together, injection moulded design increases strength as well as affordability for a low income student market.



## Panda by REELÅ



Panda is a Bluetooth speaker you can trust. It is designed around repairability, uses sustainable materials and features a timeless design. The exposed, high quality internal components are encased in injection moulded plastic, derived from used vegetable oil, as well as sustainably-sourced bamboo. The exposed screws make the speaker easy and inviting to repair.



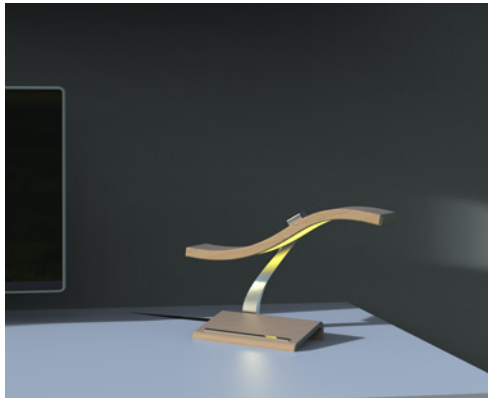
## Charles Beresford



I am a passionate designer with an interest in creating functional products that solve real world problems.

Csberesford01@gmail.com  
[linkedin.com/in/charlesberesford1](https://www.linkedin.com/in/charlesberesford1)

## Foci



Foci is a smart desk lamp with an integrated wireless charger. The lamp colour changes to a bright blue hue when the phone is placed on the charge, promoting a focused work space. When the phone is removed from the charging pad, the hue changes to a relaxed amber colour, creating a calm environment.

## Odyssey Collapsible Luggage



Odyssey Luggage is a range of two completely collapsible, hard shell suitcases. The suitcases come in two sizes: the hold and carry on version. The target user is a young professional who may not have much storage space in their home environment or just wants a practical yet minimalistic suitcase.



## Daniel Adjei Boateng



I am a diligent and intelligent designer. My intense creativity and broad mindset he. I also have the ability to create unique, functional and innovative design ideas for both the present and the future.

boatengdaniel917@gmail.com  
@dabzinovation\_

## Adaptable, Portable Bluetooth Speaker

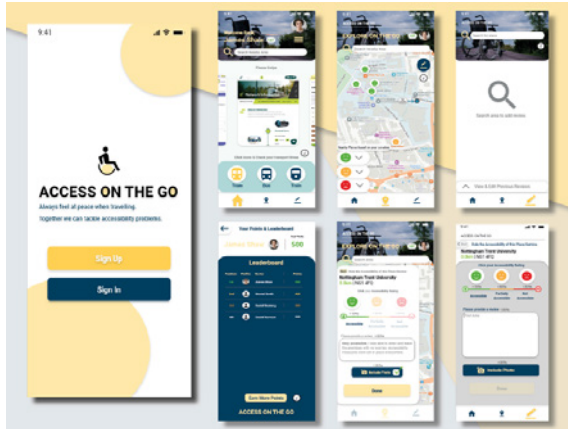


This project was to create a convenient gadget for a day-to-day lifestyle, to help students transition to university. An Adaptable, Portable Bluetooth Speaker is just that: It fills their environment with high-quality recreations of their music. And with features allowing the user to adjust sounds to their preference, they're always in control.

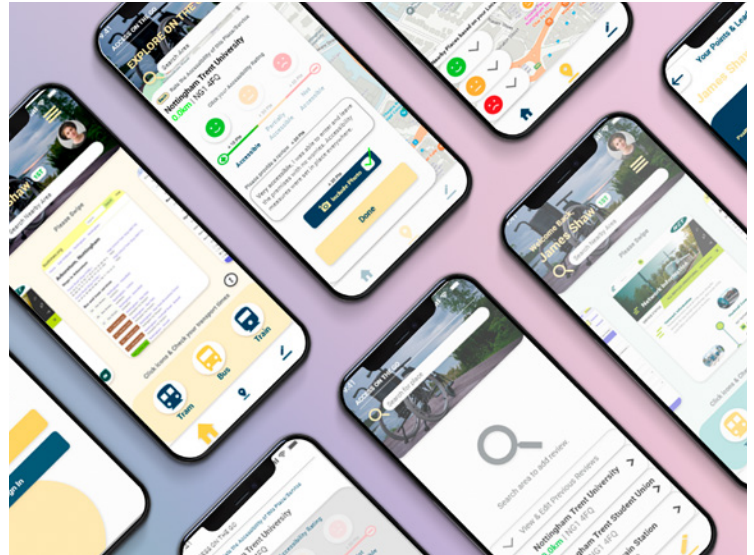




## Access on the Go



'Access on the Go' is a community-based app, with a goal to spread awareness, tackle accessibility complications and establish change for wheelchair users travelling on public transports or accessing public venues.



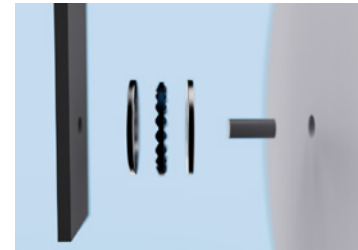
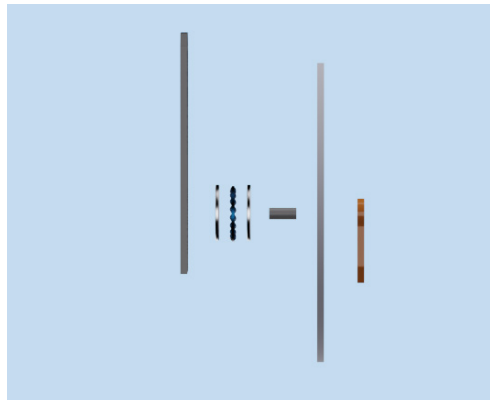
## Carl Bobbett



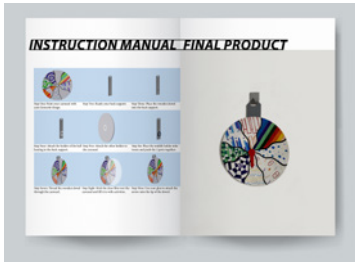
I am extremely passionate about my work and enjoy finding innovative solutions to the problems the everchanging world creates. My approach to every aspect of design is comprehensive, innovative, creative and practical, in order to create a contemporary product. I believe good design allows the user to effortlessly complete their tasks with minimum hindrance.

Carl.bobbett@btinternet.com  
@carls\_designs

## Activity Carousel



My project aims to increase the amount of time children between the ages of 5 and 7 spend outside. This is done by promoting and encouraging more physically active family time, which brings families together and increases activity among children.



## Oliver Bowles



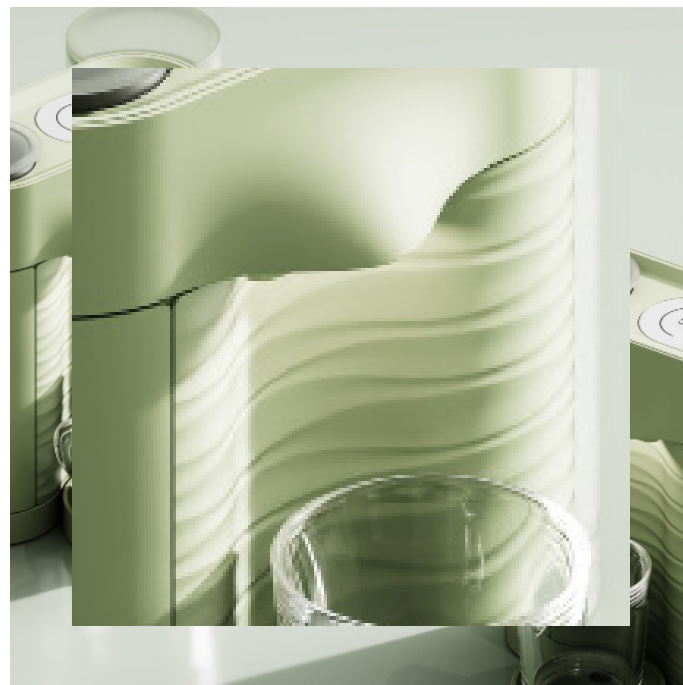
Fundamentally I believe that through, inclusive, accessible and sustainable design that we really can make the world a better place for all. Through my time at NTU and on placement, I learnt the value of collaborative working, the importance of being thorough in the greatest detail and the significance of simplicity.

[oliverbowles01@gmail.com](mailto:oliverbowles01@gmail.com)  
[@anthonyoliver.b](mailto:@anthonyoliver.b)  
[linkedin.com/in/oliverbowles-2001](https://www.linkedin.com/in/oliverbowles-2001)

## SereniTea



SereniTea presents itself as an approachable, inclusive and engaging introduction to the world of loose-leaf tea. By capitalising on everything that's great and improving upon everything that isn't, my hope is that more people are able to experience the benefits that loose leaf tea has to offer. Designed with convenience and sustainability in mind, SereniTea draws upon the practicality of modern one-touch brewing devices as well as the symbiotic nature of traditional tea making.



## Oliver Branson



My interest in design is rooted in its ability to impact the user physically and emotionally. I approach my work with curiosity and focus on delivering products which drive business success. Although the projects I undertake differ in subject, I hope part of my design personality is evident in each.

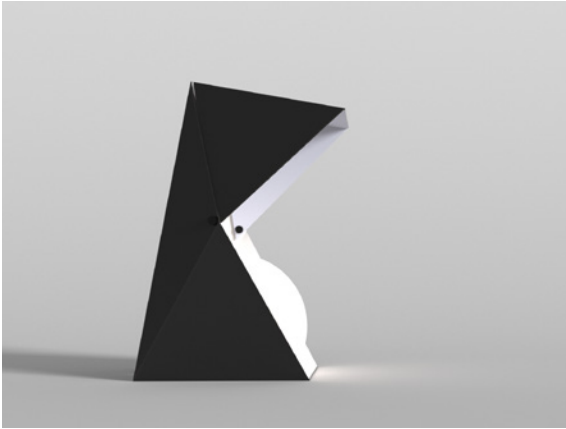
obransonntu@gmail.com  
[@designedbyob](https://issuu.com/olliebranson)  
[linkedin.com/in/oliverbranson](https://www.linkedin.com/in/oliverbranson)

## Repitched Camp Chair

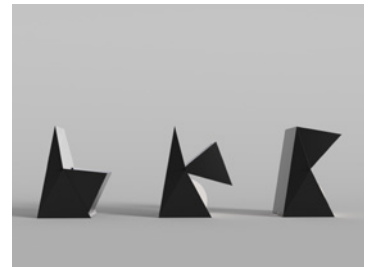
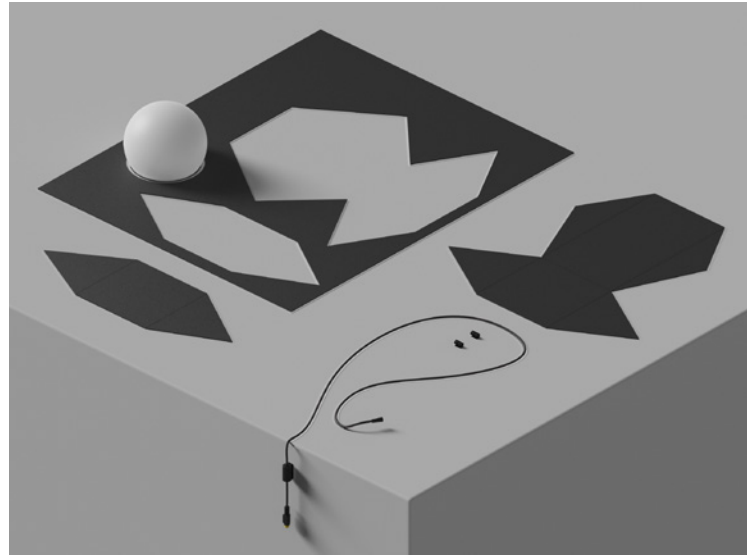


Repitched is a one-of-a-kind camping chair made from reclaimed tent fabric which was previously abandoned at UK music festivals. Repitched is lightweight and easy to carry, featuring a sturdy aluminium frame and a comfortable seat, perfect for lounging in the outdoors. It not only provides a sustainable seating solution, but it brings a piece of festival history to your outdoor experiences.

## Fold Desk Lamp



Fold is a perfect desk lamp for any home workspace. Crafted from sleek sheet aluminium, it combines minimalist design with maximum functionality. The adjustable front facing shade allows for customisable lighting, while the contrast between the warped metal and the soft sphere light provide balance whether you're working or relaxing.



## Josh Casling



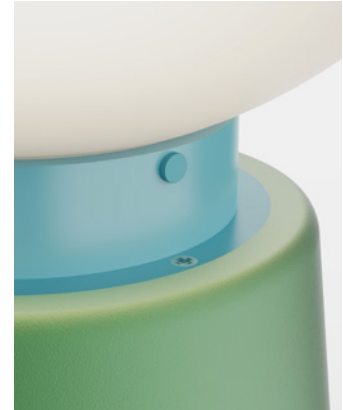
I am a driven, enthusiastic designer with a background in furniture design. I pride myself on my commercial awareness, using my skills to offer new and exciting ways to make an impact on the market.

joshuacasling@gmail.com  
joshcasling.co.uk  
@joshcasling.design  
linkedin.com/in/josh-casling/

## Liten Lamp



With a 32% increase in new build home dwellings in the UK in 2021, generic beige interiors are common across the country. The Liten Table Lamp aims to tackle this by bringing fun and joy to the modern home with a bold, colourful and friendly glass globe.





## Haden Furniture Range



Focusing on the UK furniture retailer market, the Haden furniture range centres on the bare essentials of furniture in a contemporary style. The natural oak veneer contrasted with the yellow-toned steel aims to uplift and warm the user, while the minimal design utilises low-cost processes and materials to keep the price affordable for the consumer during the cost-of-living crisis.



## Michael Chan



When designing, I am always conscious of the end user, ensuring that the products are both beautiful and functional. I am inspired by Oki Sato, known for his minimalist yet playful approach and attention to detail.

mike.chan2001@gmail.com  
mikechan.myportfolio.com/work  
@studio.chan\_  
linkedin.com/in/miketckchan/

## Rocker

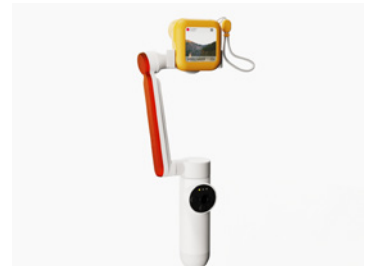


The Rocker Lamp is a touch-activated ambient table lamp, with a playful rocking motion that evokes childhood memories. Its form and lighting bring a Zen-like feel to the home, infusing joy in a simple interaction while creating a calming and comfortable atmosphere.

## Boomerang



Boomerang combines modern technology with the timeless tradition of storytelling. It provides a platform to share experiences, pass on knowledge and foster new connections with all generations, while also offering an opportunity for younger generations to learn from those who came before them.



## Heidi Claridge



As an aspiring furniture and homeware product designer, I am inspired by Scandinavian and organic forms. I take inspiration from nature, creating both fashionable and functional pieces. I prioritise being in the workshop, in order to develop new practical skills and further my knowledge.

[heidi.claridge9@gmail.com](mailto:heidi.claridge9@gmail.com)  
[h.elizabethdesign](mailto:h.elizabethdesign)  
[linkedin.com/heidi-claridge](https://www.linkedin.com/in/heidi-claridge)

## Folia



Folia is an interactive room divider that can help users to utilise their space more efficiently, whilst providing a surface for a botanical garden. The structure has rotating and interchangeable discs that allow users to customise to their space.



## Pebble



An ambient trio light piece, focused on the user and how they interact with lighting. The pebbles encourage playfulness in home living, alongside the stackability, which helps to provide a personalised experience to lighting. This light focuses on assisting users with optical challenges in the home, such as astigmatism.



## Cameron Clark



I am a creative, energetic individual who strives for originality in design. I am also a good communicator who is able to interact well with people from all backgrounds. This enables me to construct thought-provoking but fun products that meet the needs of everyday problems. My greatest satisfaction comes from knowing my products have made someone smile.

camjc100@live.co.uk  
@cameronclark.designs  
[linkedin.com/in/cameronclark2000/](https://www.linkedin.com/in/cameronclark2000/)

## Luminary Lamp



The Luminary Lamp aims to provide the ideal environment to practice mindful thinking. The striking and unique design contrasts the tripod base with a delicate rice paper shade. The lamp creates a warm, golden, ambient glow, perfect for losing yourself in your favourite book.





## Escape Pod



The Escape Pod design helps users disconnect from the stress of everyday life, losing themselves in the growing trend of adult play. The playful, contemporary storage solution is not out of place in the living room, but when opened allows adults to indulge in their hobbies - back to their childhood.



## Thomas Dickinson



My passion is to create high-quality and sustainable products that are sleek and modern in appearance. When faced with challenges, I thrive on finding the next innovative solution, and particularly enjoy problem solving and refining through iteration. I look forward to furthering my skills and creating rewarding end products for consumers.

thomas.dickinson4@outlook.com  
thomasdickinson.myportfolio.com  
@thomas.dickinson4  
linkedin.com/in/thomasdickinsondesign

## Boost



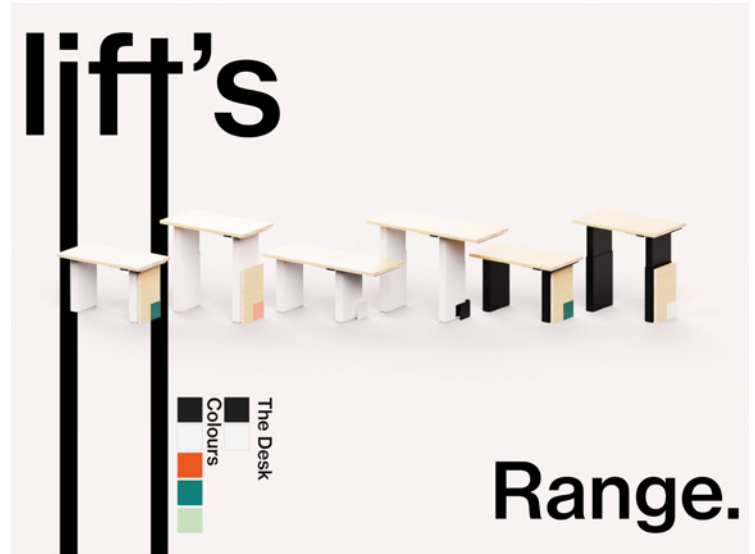
Boost is a portable Bluetooth speaker that aims to provide bass-focused music. With a fully deconstructable design to allow for modifications and repairs, this is a speaker for life, aiming to reduce e-waste. The speaker is enclosed in a flexible case that can be interchanged for a range of colours.



## Lift



Lift is a height-adjustable standing desk. With a slender form, extendable functionality and an inbuilt cable tray; Lift allows for the functionality of larger desks in a compact size. Sustainable, locally-sourced materials provide a high-quality finish that looks good in all environments, making it the perfect home office desk.



## Jonny Douglas



I have been creating things for as long as I can remember, but it was at university that I honed these skills into a professional practice. I find designing and discovering creative solutions to user problems, with my personal touch and attention to detail, exciting and rewarding.

[jonnydouglas@icloud.com](mailto:jonnydouglas@icloud.com)  
[linkedin.com/in/jonny-douglas-123abc](https://www.linkedin.com/in/jonny-douglas-123abc)

## Memento



Memento is memory collection frame where users can collate memories they pick up in their everyday lives and display them beautifully all in one space. Memento creates an organised space, reduces clutter and encapsulates a certain period of time.

## Noël De Cadeux



Noël De Cadeux is a luxury champagne packaging that is ideal for a guest to use to meet their host at a festive dinner party. It is versatile in that it also serves as a decorative tea light holder with a quaint Christmas village scene, elevating a mundane gift into something memorable and collectible.



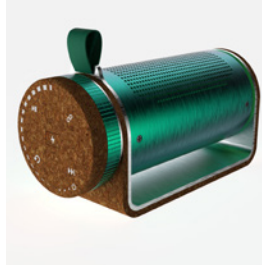
## Jonathan Gan



As a designer, I ground my work in research-based solutions. I let function come first and inform the form, with a focus on simple solutions. I enjoy tackling complex problems and working from the brief to the finished prototype.

Jonathanjagan@outlook.com  
@jonnygdesign  
linkedin.com/in/jonny-gan

## The Loop Speaker

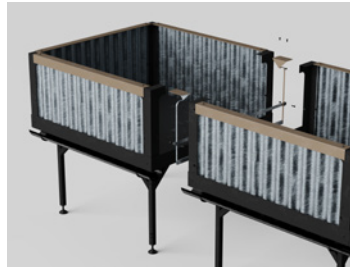


The Loop Bluetooth Speaker challenges conventional speaker design, allowing users to replace all key components using 100% recyclable or biodegradable materials, while still being durable, compact and producing a high-quality sound. It is intuitive to use and adaptable to any environment, making it the ultimate eco-friendly companion.

## GROWBOX!



This modular raised bed aims to make building urban community gardens more accessible. The beds can be built to any length for scalable farming and is raised to waist height to reduce strain injuries and for easy access. Excess water is caught and stored for use in the drier seasons.



## Meg Geraghty



I'm a designer that is driven by creativity, but my passion for design is rooted in the joy of problem-solving and the satisfaction of seeing a project come to life. I thrive when I challenge my understanding of people and put the pieces of the puzzle together for a clear direction.

mgeraghty20@gmail.com  
@meggeraghty\_designs/  
linkedin.com/in/meg-geraghty-designs/

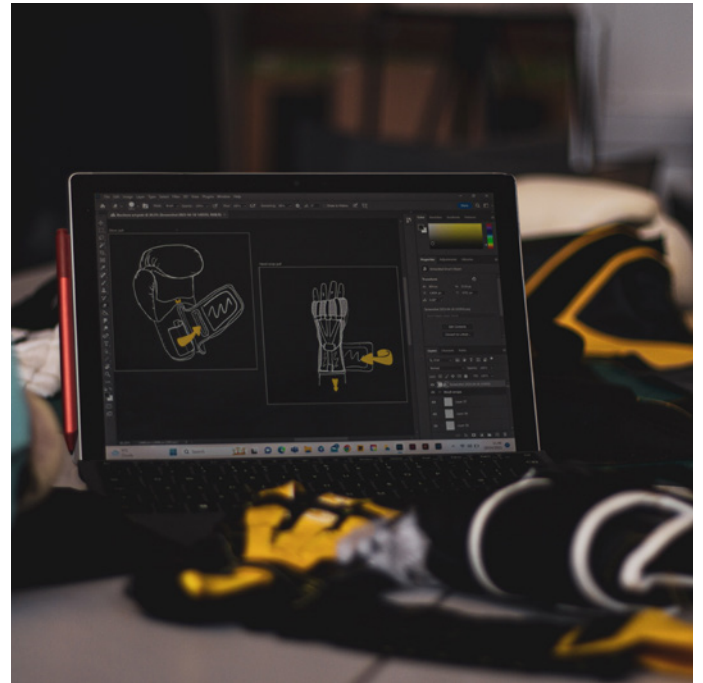
## Gendered Products in Combat Sports



This project aimed to uncover barriers female fighters face. Research led to designing a pair of gloves for beginners as existing gloves don't fit well. Interviews revealed beginners weren't catered for most of all. This project has taken a "one fits all" concept to reality.







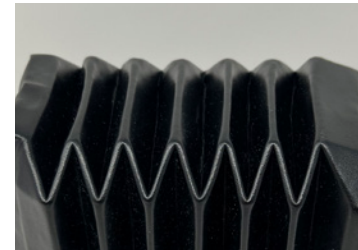
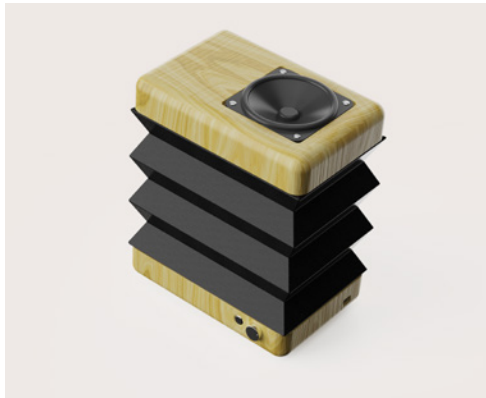
## Rachel Glinsman



As a designer, I am driven by a desire to create captivating and unique objects. My designs are inspired by my sustainable mindset, an appreciation for materials, and the desire to create something unexpected that would intrigue and delight its user.

[rachel.glinsman@gmail.com](mailto:rachel.glinsman@gmail.com)  
[@rachelg\\_design](https://www.instagram.com/rachelg_design)  
[linkedin.com/in/rachelglinsman](https://www.linkedin.com/in/rachelglinsman)

## Bellows Speaker



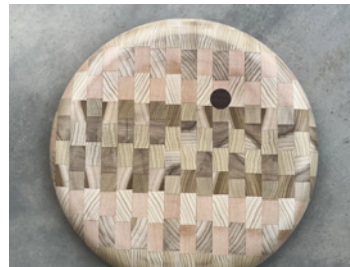
A collapsible Bluetooth speaker exploring emotional connectivity through a unique choice of form and materials, with the aim that it will ultimately be repaired rather than replaced. This speaker is a product that will age beautifully and reflect years of usage, and is reminiscent of the nostalgia of folding cameras.



## Forage Stool



The forage stool was designed as a response to material wastage within the furniture industry, and to highlight the often overlooked value of 'waste' materials. Scrap wood which might otherwise be burnt or sent to landfill was repurposed into these end-grain stools; allowing for even small scraps to be repurposed.



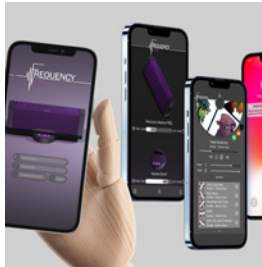
## LJ Green



I'm a young designer who loves to create valuable and innovative products for my potential users. Being a hands-on person, product design has enabled me to build and practice my skills through a creative medium. I hope to continue developing through my passion for design.

ljdgreen@live.co.uk  
@mace.dsgn\_  
linkedin.com/lucasjohnngreen

## Frequency



Frequency is a refreshing and dependable speaker ready for when things get loud, or when looking for some quality time alone. The portable battery ensures that your ready to share your frequency.

## Pure Golf



Pure Golf is a new engaging way to practice our short game that looks to improve the relationship we are currently experiencing with this part of our game. The Pure system uses Radio Frequency Identification to deliver data that can be reviewed by our users.



## Eloise Hardy



Starting each design process is extremely exciting. I love that each product begins with a single idea and that the possibilities are endless. Exploring materials, colours, and textures are my favourite aspects of the journey. I also love to incorporate my hobbies to create exciting, colorful and functional designs.

Eloisezhardy@gmail.com  
zarrindesign.co.uk  
@eloisezdesign  
linkedin.com/in/eloise-hardy17

## Concube



Concube is a shelving side table unit made out of recycled concrete waste and the binder of gypsum waste within plasterboards, to make a new material fully recyclable. The product aims to show that concrete can be used within the home and can be aesthetically pleasing.



## Colourpop lamp



The Colour Pop lamp has been designed to double up as a decoration, as well as being a lamp that takes up less room. Colour Pop enhances the warm, golden, glow lighting in the home. Even when turned off, the personalised, dimmable lighting can create any atmosphere and boost the aesthetic.



## Madalyn Harkus



My main goal as a designer is to ensure inclusivity in the products I create. I accomplish this by using a human-centric design strategy, which seeks to understand consumers better. I have used the abilities I developed throughout my degree to create practical solutions.

madalynharkus1@gmail.com  
@madalyn designs

## Circa Sleep Light



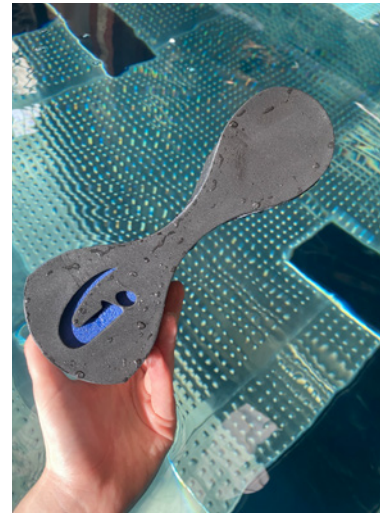
Circa is a hand-woven lamp that uses smart light technology to help the user get a full night of sleep. Thirty minutes before sleep the light dims to a lower level to allow melatonin levels to rise, enabling a restful night's sleep.



## Journey



In the UK, one in three adults are unable to swim 25 meters, and swimming instructors currently use equipment that is not completely supportive of an adult. With its inspirational branding and adjustable swimming floats, Journey, an inclusive swimming line, aims to encourage adults in the UK to swim.



## Maya Heathcote



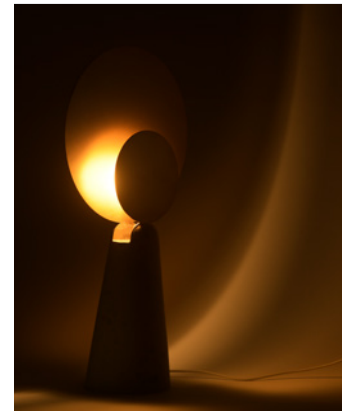
I am an empathetic designer who is interested in current material trends. At university I have learnt how to design with simplicity and balance, and wish to continue developing this in my future career.

[mayaheathcote@gmail.com](mailto:mayaheathcote@gmail.com)  
[linkedin.com/in/mayaheathcote](https://www.linkedin.com/in/mayaheathcote)

## RISE



Inspired by nature and the rising sun, RISE focuses on bringing the outside in. Inspired by Stonehenge, brass circles symbolise the sun rising above the heel stone. The terrazzo lamp base is a modern take on stone, with coloured chips representing each season.

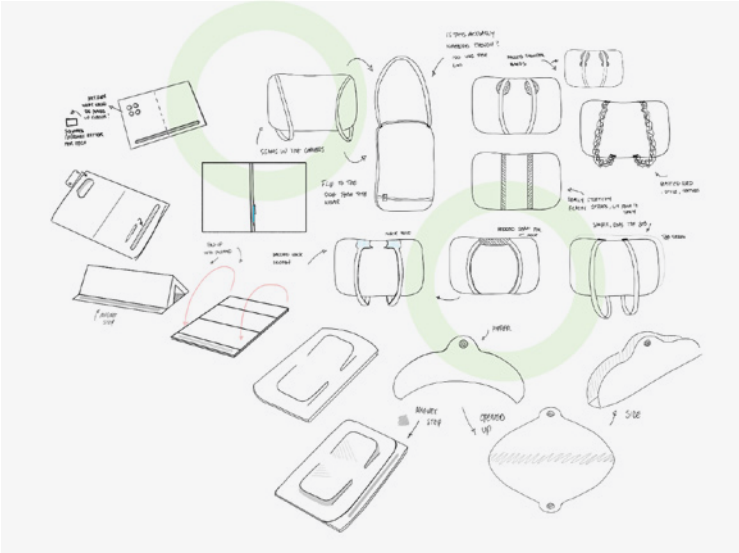




# DeskDash



By encouraging remote workers to use public libraries as a workplace, DeskDash helps enhance the remote working experience by providing quick portable safety of your valuables, paired with a work mat designed to organise and save your space when left unattended.



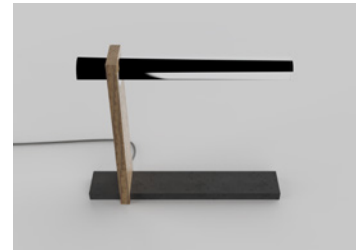
## George Hill



I believe that design can be a force for good in the world. That's what motivates me to design products that enhance the lives of the people using them. I enjoy working with both physical and UI/UX design as the tangible and digital worlds converge.

[georgehilldesign.com](http://georgehilldesign.com)  
[@georgehilldesign](https://twitter.com/georgehilldesign)  
[linkedin.com/in/georgehilldesign](https://www.linkedin.com/in/georgehilldesign)

## Cykle Lamp

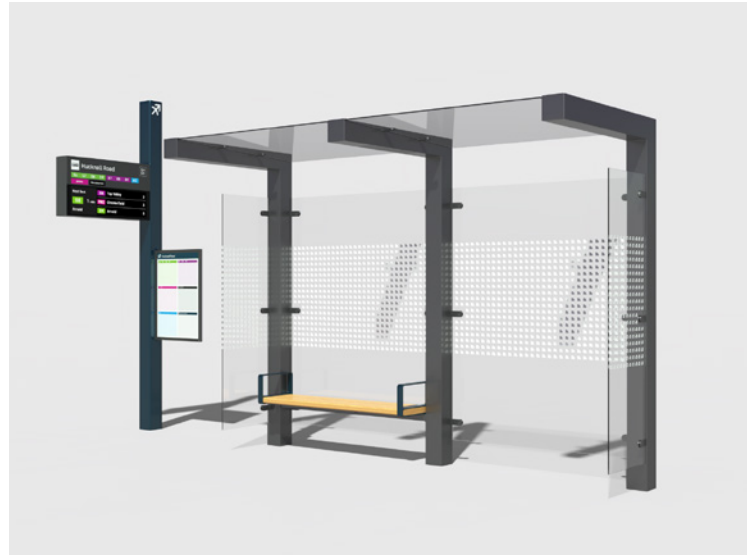


The Cykle Lamp gives the user flexibility to adjust the lighting in their home. Turning the dial transitions the illumination from task lighting to ambient uplighting, allowing the user to move between work and rest. As our spaces work harder, lighting can define how we use them.

## New Robin Hood Network



The New Robin Hood Network is intended to give confidence in the public transport system. Currently, transport in Nottingham is fragmented between multiple companies, negatively affecting people's perceptions of the system. Integrating all modes and harmonising the way information is presented gives people confidence that there is a single network they can rely on.



## Ed Howe



Creating fun and helpful products that use innovation drive my design style and process. My philosophy is, if the design process does not reflect the product's aims, the design is flawed. Ultimately, I want to make the design space better for both the user and the designer.

edhdesign@yahoo.com  
@howe\_design  
[linkedin.com/in/edward-howe00/](https://www.linkedin.com/in/edward-howe00/)

## Flow



Flow is a dynamic seating option that forces an engaged posture. Encouraging the mind's amazing ability to get into the flow state brings you into the present moment while anxiety stays in the past. Taking inspiration from climbing, Flow has been designed with a minimalist and playful aesthetic to suit any home.

## Pillo



Pillo is a lighting option that fits into the bed seamlessly. Designed as a complete solution for comfort, Pillo combines the familiar use of a pillow with the ability to change the ambience of your environment. By adding a memory foam shell around warm glowing lights, Pillo creates immersive comfort.



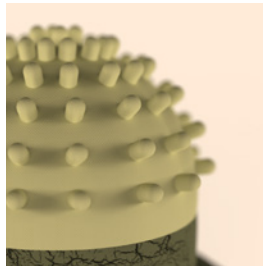
## Arshiya Jain



I am budding product designer with a passion for exploring the intersection of form and function. Inspired by the natural world, I like to find creative solutions to everyday problems. My favorite projects involve designing tangible products that improve people's lives. In the future, I hope to pursue a career in sustainable design, creating products that are both beautiful and eco-friendly.

arshiya1422@gmail.com  
@waffywaves  
linkedin.com/Arshiya Jain

## Skinease



Skinease is a multipurpose product made for people who suffer from chronic itching. It comes with a moisturizer container which is refillable, the lid of the container has a detachable steel roll-on for cool compress effect to calm the itchy skin; a tactile textured silicone cap is attached on the roll-on for safe scratching; and a protective top cap for the entire product. All the components of the product are detachable and washable to maintain hygiene standards.

## Spire



Spire is a table lamp that focuses on evoking emotions through craft. Its a playful and interactive table lamp for homes and acts as a conversation starter piece. The movable light can be placed in any position and has a playful maze on top, which can be interacted with by moving the weave ball along the path.





## Jamie Jim



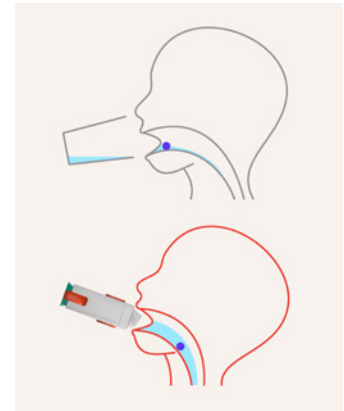
I navigate both design and life's challenges with enthusiasm, blending creative flair and a problem-solving mindset, rooted in personal experiences. Focusing on forward-thinking, human-centred design, I champion inclusivity, diversity, and empathy in my work. I explore the why's, how's, and what if's, striving for meaningful impact and lasting connections.

[jimheilok@gmail.com](mailto:jimheilok@gmail.com)  
[behance.net/jamiejim](https://behance.net/jamiejim)  
[@jhl\\_design](https://www.linkedin.com/in/jamiejim/)  
[linkedin.com/in/jamiejim/](https://www.linkedin.com/in/jamiejim/)

## VitaPod



Responding to the cost-of-living crisis, VitaPod mitigates the difficulty of swallowing pills in children with ARFID, enabling use of free NHS supplements and reducing reliance on costly alternatives. The angled spout encourages head balance, directing pills to the throat for effortless intake.

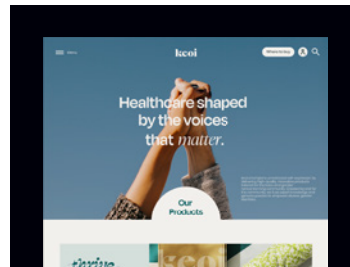




keoi



While chest binding offers mental health benefits, it can lead to physical issues in 97.2% of wearers. Enter keoi, a queer health and wellness brand offering accessible, expert-backed care. Its primary offering: a self-care kit designed with trans-health specialists utilising physical tools and digital resources, to release and relieve the body pre, post and in-between binding.



## Sam Johnson



I am a hands-on, creative designer with a passion for fashion and textiles. With an enthusiasm for developing futuristic products, I am constantly looking to address present-day issues through design. My own hobbies outside of design frequently serve as inspiration for my work and help me turn each brief into a passion project.

[samj.productdesign@gmail.com](mailto:samj.productdesign@gmail.com)  
[@sam.j\\_desgin](https://www.instagram.com/sam.j_desgin)  
[@linkedin.com/in/sam-j-johnson](https://www.linkedin.com/in/sam-j-johnson)

## Porth

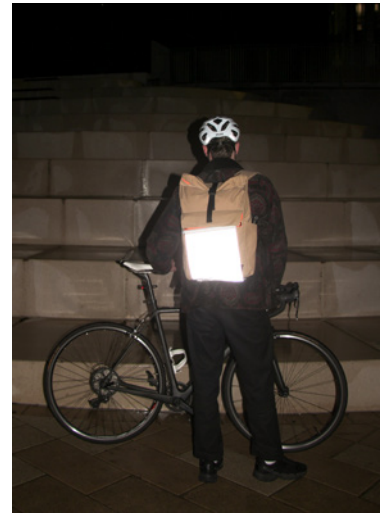


As a striking statement piece, Porth embraces both textured materials and geometric shapes. The light, which draws inspiration from coastal areas, has a wave-like texture that is tied to a spherical frame. The lighting component alludes to the moon's gravitational pull on the waters by mimicking a lunar eclipse.

## Ziun Backpack



The Ziun backpack is a commuter backpack that aims to address the perennial problem of city cyclist safety. Stylish off the bike and functional on the back, the backpack utilises reflective and hi-vis fabrics to make the rider more visible to other road users.



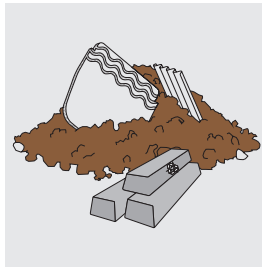
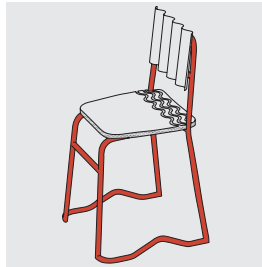
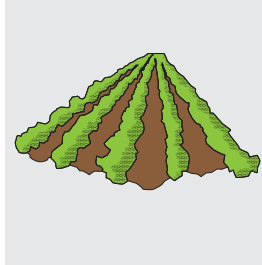
## Ewan Johnston



I am a designer who focuses on functional and intelligent design, by trying to find new and interesting ways to solve age-old problems. I also have a keen interest in alternative, sustainable materials and their possible applications in my own design work.

johnston.ewan2001@gmail.com

## Ma Santiva



The Ma Santiva Chair is a sustainable solution for public furnishings. It is aimed at restaurants and cafes and once used is supposed to be thrown away. The seat and back are a completely biodegradable hemp composite and the frame from steel, so between your compost and the recycling, there's no waste.



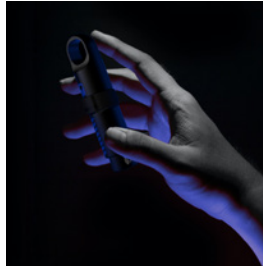
## Harshil Kothari



I've been involved in a wide range of design projects, focussing on long-lasting product and service outcomes. As a designer, I understand the importance of creating a visual appeal. My skills lie in my software ability as they elevate the visuals of each concept.

kothari.harshil25@gmail.com  
@harshil\_kothari25

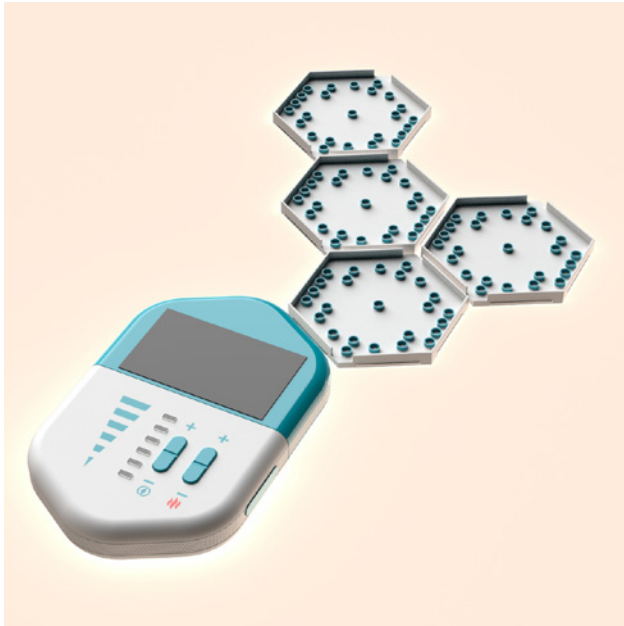
## FitQuest



Fitquest is a portable gaming and wellbeing accessory, designed to combat Diversion or 'Gaming' Disorder. The three-part design features a tracking ring to monitor the users physical stats, a USB stick that tracks usage data from the gaming console, and a holder to keep both together when travelling.



## Hexmate



Hexmate's design approach is modular and modern, using the technology of TENS (transcutaneous electrical nerve stimulation) and heat fomentation for immediate relief. Regulated heating controls are integrated within the device itself and are easy to use for all age groups. Its modular form is easy to heat, and can be used anywhere on the body. The device is attached using the magnetic fixture, making it versatile enough to fit anywhere.





## Eunice Kwok



I'm from Hong Kong, a city that blends eastern and western cultures. People here live in tiny spaces, so they need furnishings that save space and are multi-functional. As a designer, I aim to improve people's daily lives by with creative products that care about user experience and sustainability.

eunicekdesign@gmail.com  
@e.\_design\_  
linkedin.com/in/eunicekwokdesign

## Rotato



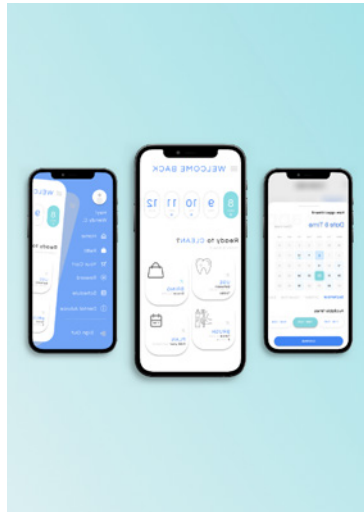
Rotato is a unique lighting fixture that uses the Pomodoro technique to help home office workers stay focused and aware of the time. It switches on one side at a time and turns off every 25 minutes. Flipping the lamp triggers a five-minute countdown and a colourmood light, reminding users to take a break.



## BraceCLEAN



BraceCLEAN is a portable oral cleaning kit, designed for orthodontic brace users. It helps alleviate the discomfort caused by food getting stuck in the teeth and braces. The kit is reusable and environmentally friendly, reducing waste from disposable oral products. An accompanying app provides refilling plans and gentle reminders to clean your teeth after meals.



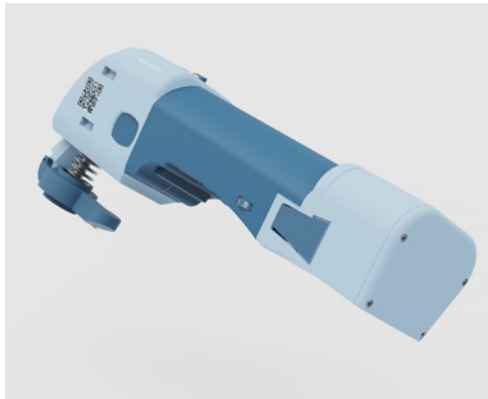
## Joe Ladbury



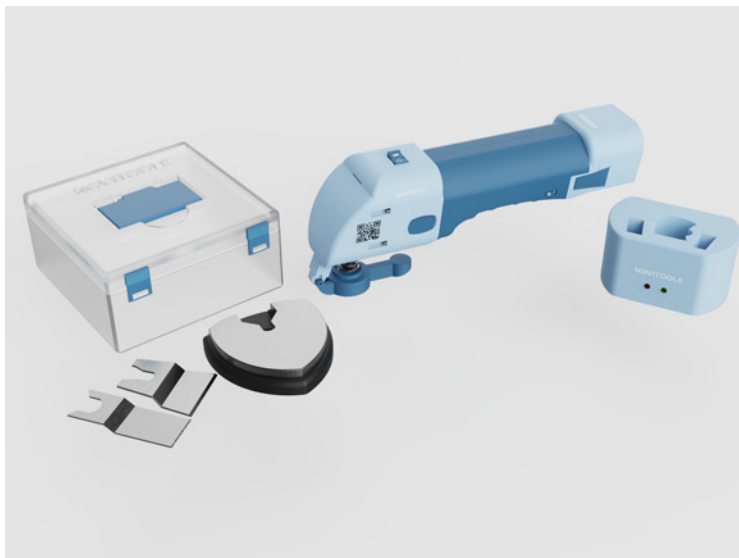
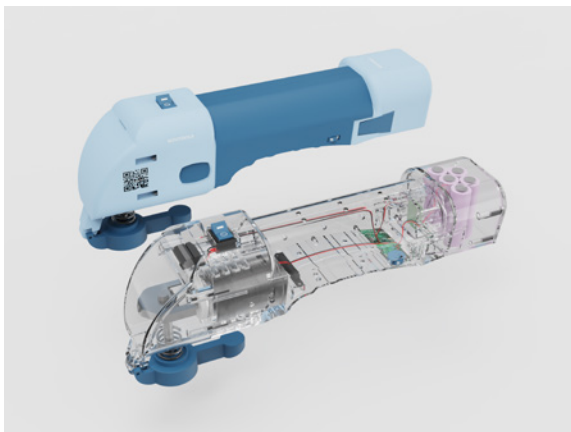
As a designer, working alongside people is what I love the most. What motivates me is hearing people's thoughts and challenges, and forming solutions for them.

joeladbury@hotmail.com  
@joeladbury

## Novatools



Novatools aims to make power tools more inclusive for everyone, specifically novices, by removing the fear factor and making the tool as clear as possible to the user through colour-coded touch points.



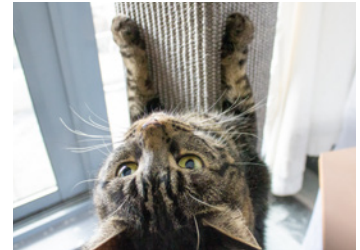
## Kawai Lam

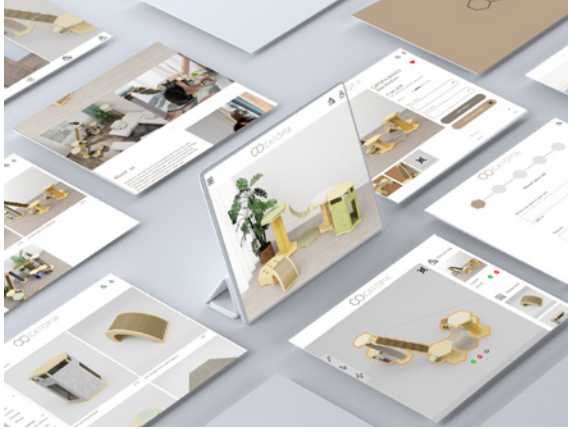


As a designer, I am passionate about high-quality, socially-responsible and aesthetically pleasing design. My work is often animal-centred and hand-crafted, and designed with the overall aim of suitability and functionality. I believe a successful design would be based on positive interactions between customers and the product.

Lamkawai97@email.com  
@Bonnielam\_design

## Catopia





Satisfying your cat's physical and mental welfare needs is critical. Catopia is a modular cat furniture designed for indoor-only cats who do not have the chance to explore nature outside. By creating your configurations, cat owners can constantly refresh the structures to prevent boredom in indoor cats.





## Fred Martin



With a strong interest in illustration, much of my design takes a playful, whimsical approach. I strive to create products which intrigue the user, sparking conversation and interest. A product does not always need to justify itself, but can simply be there to be enjoyed and to put a smile on peoples faces.

fwjmartin19@gmail.com  
fredmartin.cargo.site  
@fredmartin.design

## Headless

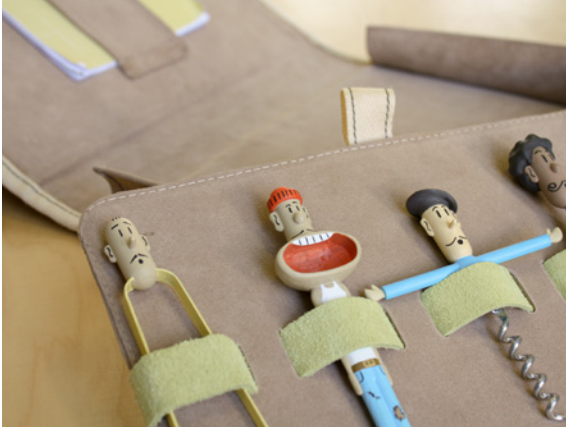


Headless is a stainless steel lamp that mimics a character holding its own head (the bulb). The design, made by bending a single piece of sheet steel, is intended for use in creative workspaces and the home. Its comical, whimsical nature is intended to spark intrigue amongst users.

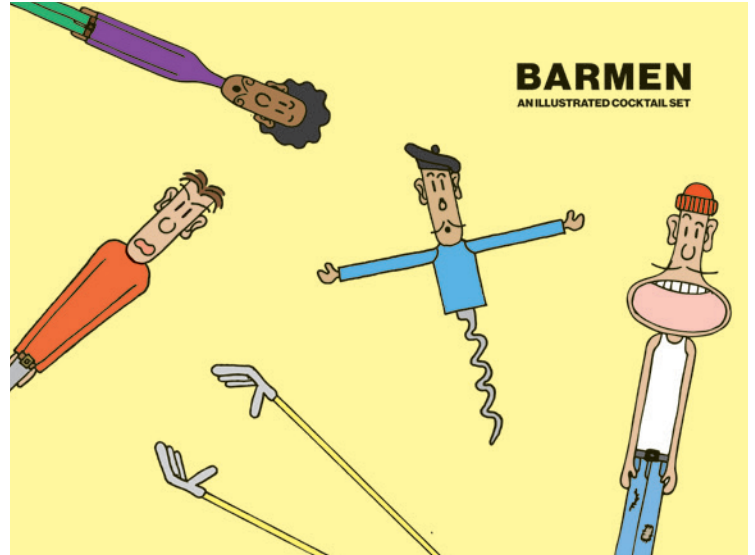




## Barmen



Barmen is an illustrated cocktail set with a collection of unique characters, all mimicking classic bar utensils. The aim of the project was to bring a range of illustrations to life, forming a narrative behind each figure and creating a fun and enjoyable cocktail making experience in the home.



## Francis McDonald



I am a tactile-focused designer who strives to improve life with functional design solutions. My design philosophy is centered around creating simple, intuitive and elegant solutions to small-scale problems. Like Yanagi, I think that good design is subtle and blends into people's lives. It should leave a positive impact on their subconscious, manifesting in naturalistic integration with the design language of a product.

francismcdonald1308@gmail.com  
@f.mc.design  
linkedin.com/in/francis-mcdonald

## Rei



Rei is a statement lamp with a mycelium shade and wooden frame that attempts to imitate the natural serenity found in British woodlands. The cylindrical light allows the user to replicate the forest ambiance in their own home, catering to the growing market of people who find urban living overwhelming.



## Solo



Physical health is a problem that is presented to musicians everyday. This stool aims to provide a practice point for guitar playing, to reduce muscular injury and pain related to continuous playing. Solo provides an easier option for those with previous long term injury and to reduce mental stress whilst playing, to promote better posture during practice, resulting in sessions lasting longer and being more effective.



## Max Mihill



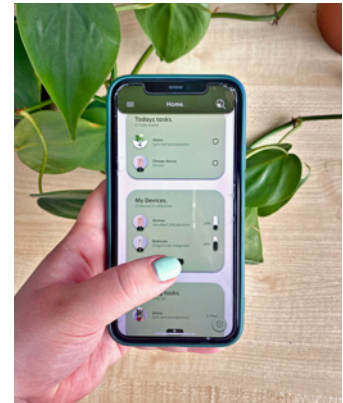
I am a young, focused designer drawn to minimalist designs and simple solutions. My area of expertise lies in UI design and CAD development, and I thoroughly enjoy utilising these tools to bring my designs to life.

m.mihill.27@gmail.com  
@maxmihill\_design  
linkedin.com/in/maxmihill/

## LeafLife



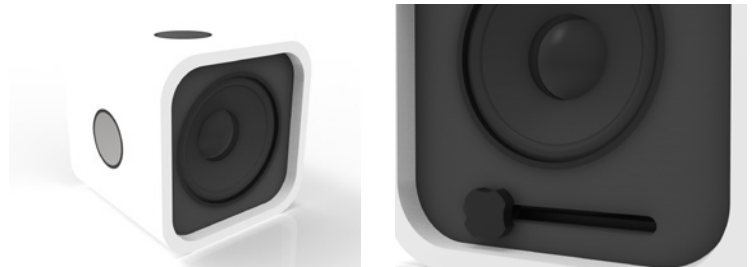
LeafLife offers a two-fold solution to assist individuals in caring for their indoor plants. The moisture sensor boasts a stylish design that integrates the warmth of natural wood, catering to the preferences of its intended audience. The LeafLife plant care app complements the sensor by delivering comprehensive care reminders.



## Speaker Bloks



Today's technology-driven consumers expect greater customisation and upgradeability in their devices. Speaker Bloks, a portable Bluetooth speaker, meets these expectations by utilizing interchangeable modular components. This allows the user to swap out modules for different aesthetics or to achieve higher levels of audio quality.



## Manaz Nariman

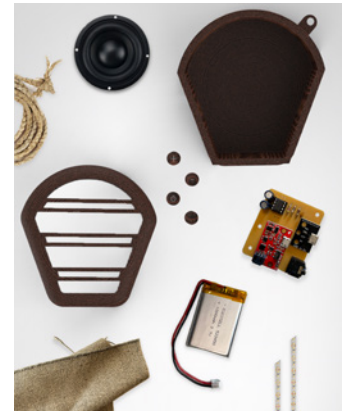


As a product designer with a keen interest in branding, I consider myself to be a visual storyteller. My goal is to create products that not only function well, but also evoke emotions, and connect with consumers on a deeper level.

I continuously apply the skills and knowledge gained from my coursework to my daily work, ensuring that I stay current and innovative in my approach to product design.

manaz.nariman@gmail.com  
@girlwiththosecurls  
linkedin.com/in/manaz-nariman/

## Scaleo







Scaleo is a mini speaker that seamlessly combines state-of-the-art audio technology with a design rooted in bio-mimicry. It takes inspiration from the pangolin - one of the planet's most trafficked and vulnerable species. Compact, durable and sustainable, this speaker is crafted using eco-friendly materials that do not skimp on a premium audio and user experience.





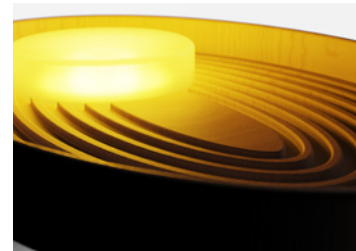
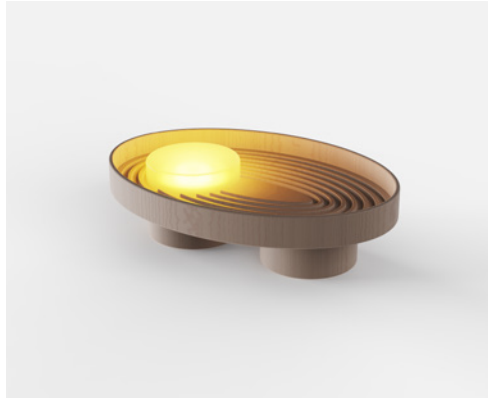
## Joss Nichols



As a designer I aspire to create products which users can create a connection with and equally provide long-lasting aestheticism and functionality. I want my design to hold a sense of purpose by promoting sustainable consumption through high quality products, a strong sense of durability, and timeless form.

joss.nichols51@gmail.com  
@studiojln  
linkedin.com/JossNichols

## Ome Table Light



Ome is a light designed to promote comfort and wellbeing. Ome creates a calm and inviting environment through soft warm lighting, a custom textured face and it's small squat design, creating a warm and inviting presence to any room in the home.

## The most sustainable mules on earth?



Slowdays is a footwear project which set out to achieve a sustainable vision of the future of footwear. The Slowdays Mule is a minimalist, relaxed footwear silhouette which promotes sustainability through durable design, sourcing over 80% of its materials from waste stream origins, avoiding virgin materials completely.



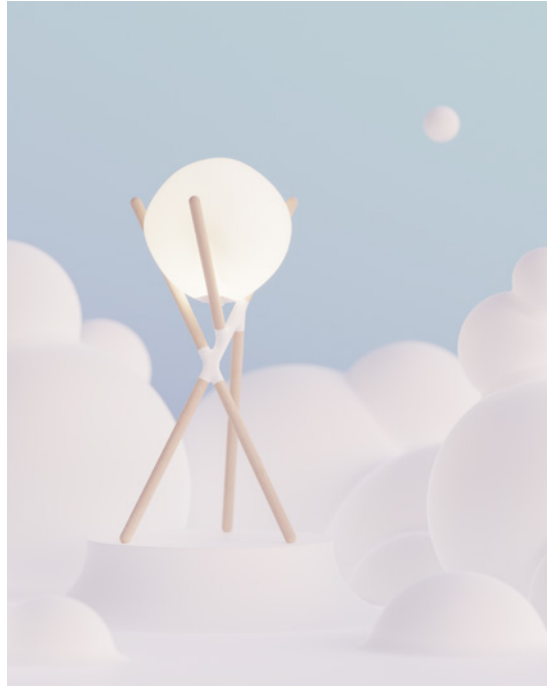
## Harry Nightingale



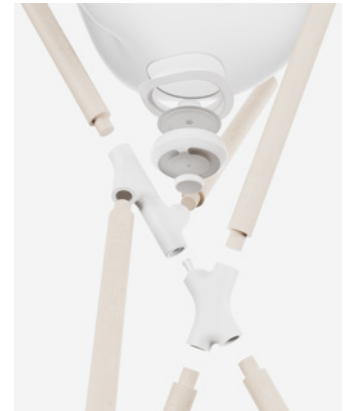
Creation has always been at the heart of my life. My curiosity and desire to learn have driven me to constantly improve my skillset in every discipline of design, whether it involves getting my hands dirty or venturing into new technologies. I strive to deliver exceptional products that exceed expectations.

[harrynightingale3@gmail.com](mailto:harrynightingale3@gmail.com)  
[harrynightingale.myportfolio.com](https://harrynightingale.myportfolio.com)  
[@design.nightingale](https://www.instagram.com/design.nightingale)  
[linkedin.com/in/harrynightingale/](https://www.linkedin.com/in/harrynightingale/)

## Omni Glow Lamp



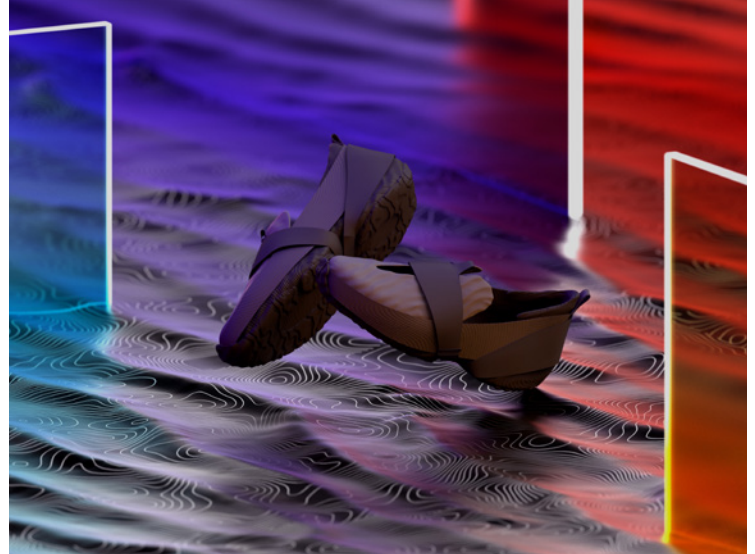
The Omni Glow Lamp is designed to promote a sense of comfort and wellbeing in the home with soft emissive lighting that creates a feeling of relaxation in the surrounding environment. The rounded bulb is nestled onto the branch-like frame, where the optimal brightness can be adjusted.



## AddiGo



The AddiGo shoes are made with additive manufacturing, prioritising modern technology and sustainability by avoiding traditional methods that leave a harmful carbon footprint. The use of 3D printing and sustainable materials allows for innovative design and efficient workflows, reducing production time and costs. Choose eco-friendly practices for cutting-edge comfort.



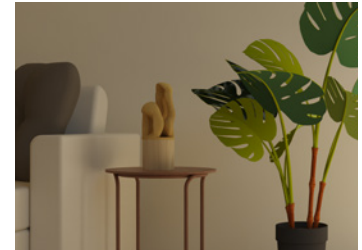
## Oonagh O'Regan



As a designer, I am passionate about the well-being and emotional needs of individuals and groups. From a conceptual standpoint, I enjoy developing ideas that have a direct impact as well as others that are more passive, aiming to spark conversation as an aid to nurturing individuals' development.

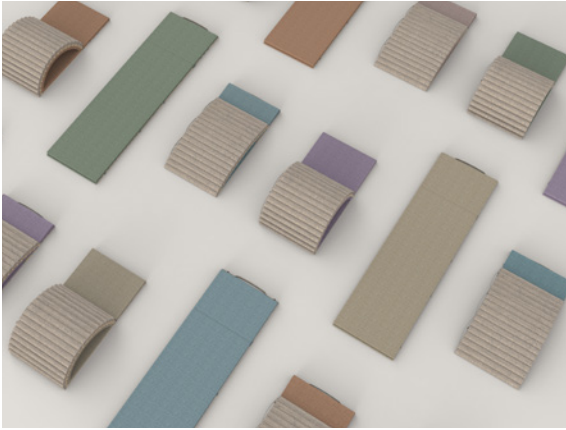
oboregan@hotmail.co.uk  
@oonagh.design  
linkedin.com/in/oonagh-oregan

## Us



Us is a side light that explores the forms and language of hugging as an act of comfort. The light emits a warm glow that illuminates the two forms, representing the inner warmth we gain from this intimate act.

## Moksha



Moksha is a back bending product, enabling an individual to relieve the physical strain of sedentary work. The aesthetics are inspired by the visual perception of comfort seen in sofas. Moksha attempts to counterbalance the harm that long term use of chairs can do to our anatomy.



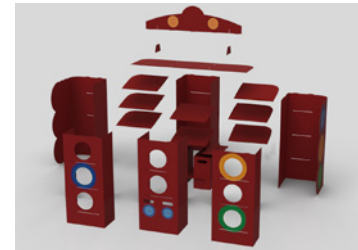
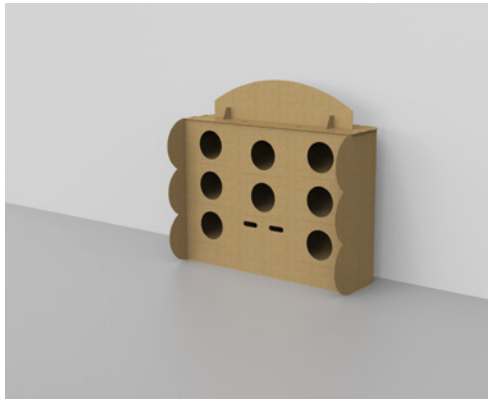
## Olivia Ottley



As a designer, I aspire to create functional products that enhance the lives of the user. My projects often center on simple, wooden aesthetics, with pops of colour throughout. Refinement and reflection are an important part in my work, with a focus on gaining a deeper understanding of the market.

[oliviaottley@gmail.com](mailto:oliviaottley@gmail.com)  
[@oliviaottley\\_design](https://www.instagram.com/oliviaottley_design)  
[linkedin.com/in/olivia-ottley](https://www.linkedin.com/in/olivia-ottley)

## Crisp Display



Currently, in the UK, crisp packets can only be recycled in stores, with many consumers not being aware that they can be recycled at all. The Recycle Me Crisp Display tries to address this by promoting recycling and providing a location for customers to bring their empty packets.



## HIVE 5



With Covid-19 having a continual impact on education, the HIVE 5 aims to overcome the communication barriers that children have developed during lockdown. The HIVE 5 offers group play to encourage conversation and team work amongst groups of children in Early Years Education.



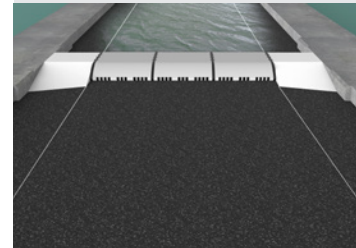
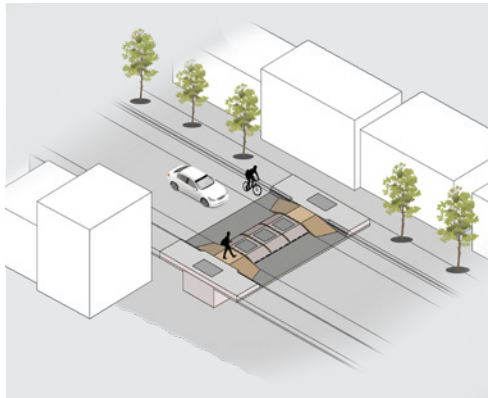
## Josh Packham

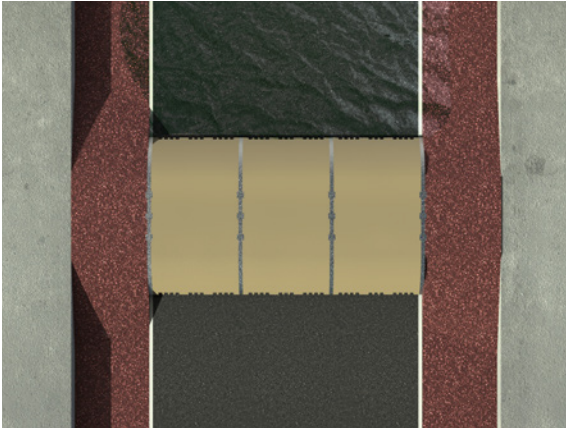


I began designing to solve the problems in my life. I then took that forward and started designing for the benefit of others. I take my design inspiration from current trends and design movements, such as organic design. I hope to continue designing as a career and help more people.

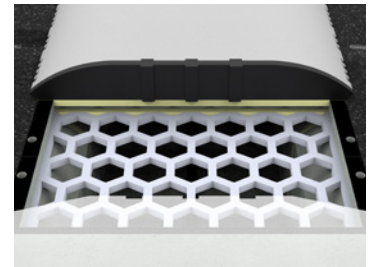
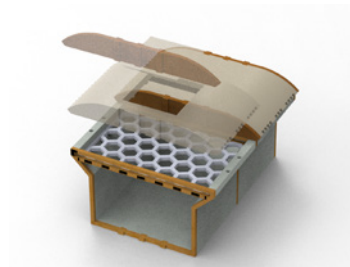
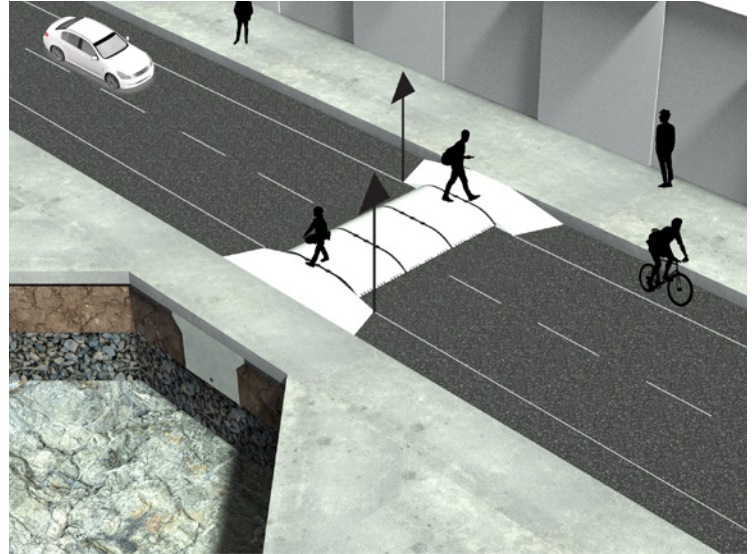
joshuapackham@gmail.com  
[linkedin.com/in/joshua-packham-des/](https://www.linkedin.com/in/joshua-packham-des/)

## F.R.E.D.s





Flooding is becoming more frequent across cities globally, impacting both human and natural environments. F.R.E.D.s (Flood Reduction Environmental Drainage system) is an innovative solution that helps tackle this problem. It uses existing Sustainable Drainage Systems technology and implements it in an urban setting to act as nature should.



## Oscar Pangbourne



I have always been drawn to three-dimensional compositions, external forms and contours in art and photography. A fascination of the design process to create functional interior products has led me to create my own unique, practical designs. Design allows me to express my creative way of thinking and put it to use, creating concepts and finalised designs.

oscarpangbourne@icloud.com  
@o.pangbourne\_artdesign

## Statera



The combination of the rising cost of moving home with the need to create an personalised environment led to the development of this low cost, modular piece of furniture. The product aims to help a new home owner create an affordable space they can make their own.





## Arc



The Arc is a light piece that creates a sense of comfort and wellbeing within the home environment. The Arc enables the user to have lighting that fits within this minimalist movement whilst combating the cold feeling these rooms can radiate.



## Patricija Pažus



As a creator, I seek to balance sleek, modern design with my own funky and illustrative style. My work is characterised by a strong emphasis on story narration on commentary design, with a focus on functionality as well. I try to constantly explore new mediums and techniques to bring my ideas to life.

patricijapazus@gmail.com  
patricijapazus.com  
@p.pazus  
linkedin.com/patricija\_pažus

## Knot Lamp



“Can You [K]not?” lamp is a simple and exuberant design that incorporates conceptual thinking, challenging societal interactions and methods along the way. The design goal is not only to elevate the everyday lifestyle in the residential area but also to spark conversations that bring life to the room.



## Steppin' Toes



Steppin' Toes is a new board game and accompanying decorative board game set, Hybrid, designed to combat the toxic "can do" working ethic in our capitalist society. The project was created to engage social interactions and question meritocratic ideology via an engaging medium and visually with an eye-catching decorative piece.



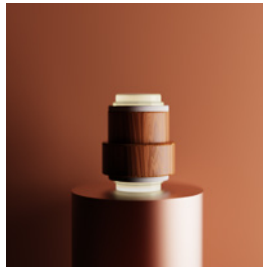
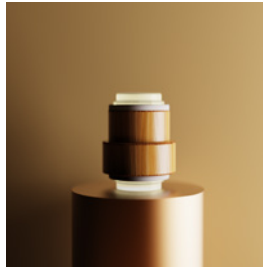
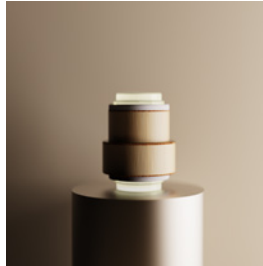
## Jake Pearson



My passion and strong work ethic for design allows me to gain knowledge about current trends and products in the industry. This enables me to think of new ways to develop products that will benefit people in the future.

jakepearson558@gmail.com  
jakepearson.co.uk  
@jake\_pearson1  
linkedin.com/in/jakepearson1/

## Unity



Unity are a set of modular, stackable and individual lights, designed to be used in studio spaces to increase sociability and bring a sense of togetherness when working collaboratively. Influenced by the pandemic, studio space time has been drastically reduced and Unity encourages people to reunite once again.

## Hydrate



Hydrate is a smart hiking hydration bottle that ensures beginner hikers consume the correct amount of fluid during their hike. The design is a curvaceous and naturally flowing form, with smart electronic elements to ensure correct hydration and a professional looking finish.



## Amalia Phillips



My design practice revolves around simplicity and takes inspiration from the Japanese philosopher Yanagi Sōetsu. My interest lies in homeware design, creating products and understanding how materials will change over time to create a unique experience for a lifetime.

amaliaphillips96@gmail.com  
apmpdesign.uk  
@apmpdesign  
linkedin.com/in/amaliaphillips96

## Lucia Lantern



The Lucia Lantern is to be used alongside comforting activities within the home, enhancing mindfulness and well-being. The light is designed to be removed and switched on like a traditional candle lantern, with a variety of shades and base parts allowing for full customisation.



## Matsu Tea Set



The Matsu Tea Set is inspired by both Japanese and Chinese tea brewing ceremonies and preparation methods, bringing a new experience to making tea. The hand-crafted nature of the tea set has a unique serendipity that enhances the consumer's relationship with the experience.





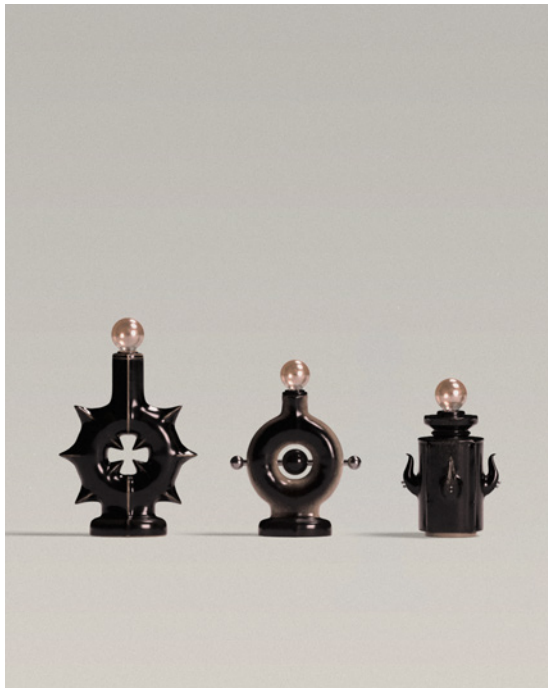
## Anya Pivčuka



I am an interdisciplinary digital artist, specialising in 3D sculpting for immersive experiences. Drawing from queer ecology and esoteric philosophies, I use image-making and world-building as tools to visualise alternate Ecotopian realities, in hopes of promoting a more sustainable future.

[anya.pivcuka@gmail.com](mailto:anya.pivcuka@gmail.com)  
[anyapivcuka.com](https://anyapivcuka.com)  
[@intersonal](https://twitter.com/intersonal)  
[linkedin.com/in/anyapivcuka](https://www.linkedin.com/in/anyapivcuka)

## Relics



Relics is a collection of statement lamps which aim to challenge binary thinking and promote acceptance. The design was guided by personal allegory - using the symbolism of piercings to represent my experience growing up queer in a post-soviet household.

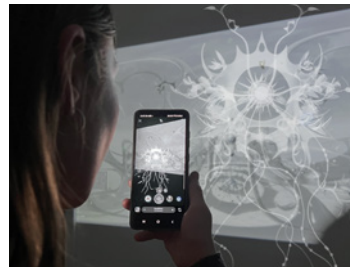




## As Within So Without



As Within So Without is an immersive digital art installation that introduces an imaginative lore of thoughtforms – entities which manifest from our thoughts. Using art, storytelling, and immersive experiences, this project aims to encourage people to foster a more positive and hopeful perspective on their relationship with the environment, emphasising the importance of ecological mindfulness and interconnection of all living things.



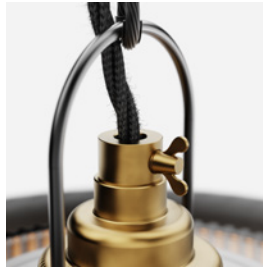
## Holly Preece



I am deeply fascinated by the intricacies of high-level craftsmanship, with a particular interest in furniture and lighting. My meticulous attention to detail motivates me to challenge myself throughout my design process. In combination with my love for carefully selected materials and design choices, I aspire to create functional and exceptionally-beautiful designs.

[holly.preece@btinternet.com](mailto:holly.preece@btinternet.com)  
[@hollypreece\\_designs](#)  
[linkedin.com/in/holly-preece](https://www.linkedin.com/in/holly-preece)

## The Linear Pendant



The Linear pendant light is a timeless, high-end piece that appeals to both established consumers looking for a statement collection and those seeking a single investment piece. With endless customisation options, traditional industrial design infused with a modern twist, and a seamless fit within any interior, it is a must-have to elevate any living space.

## The Hide Armchair



The Hide Armchair demonstrates exquisite comfort and timeless elegance, designed to last for years to come. Crafted with thoughtfully selected materials, including fine leather and rich walnut, this armchair embodies the essence of new luxury, delivering an enriched sensory experience that comforts and relaxes the mind and body.



## George Preston



I have an eye for creating beautiful products that seamlessly combine form and function through mediums like sheet metal and acoustic design. I ensure that every product I create is not only visually stunning but also creates a more hands-on user experience.

[georgepres27@gmail.com](mailto:georgepres27@gmail.com)  
[georgepreston2019.myportfolio.com](http://georgepreston2019.myportfolio.com)  
[theprestonportfolio](http://theprestonportfolio)  
[linkedin.com/in/george-preston-designer1](https://www.linkedin.com/in/george-preston-designer1)

## BeBass



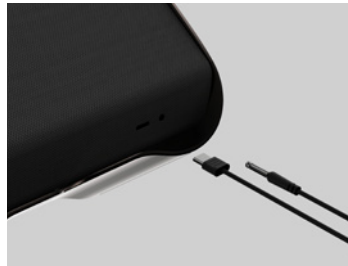
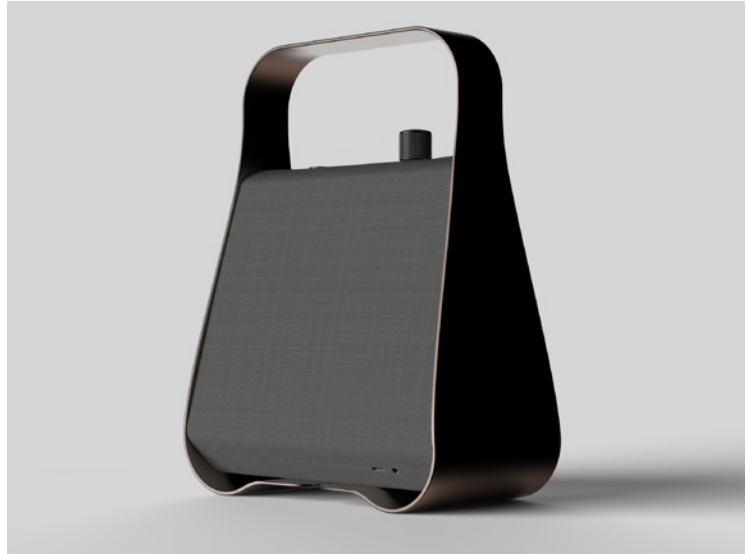
BeBass is a 4-string bass guitar that allows for easy personalisation with interchangeable components, while its dismantlable design offers convenient storage and modification options. It provides a more hands-on playing experience for musicians of all levels, inspiring individuality and the new generation of bass players.



## Outcry



Outcry is a home-oriented portable Bluetooth speaker. It uses atypical metal processes to differentiate it in the market. The product can be quickly disassembled for maintenance and features an elegant anodised aluminium shell with contrasting soft-touch fabrics, making it ideal for adding warm notes to the home.



## Michael Puleston



I'm captivated by the shapes, textures, and colours of objects around me. I view the world as canvas of inspiration, where natural forms often spark new ideas, from the Fluid curves of a leaf to geometric patterns of a building. My inspiration leads me to create visually-stimulating and functional designs.

[mjpuleston@gmail.com](mailto:mjpuleston@gmail.com)  
[@stondesigns](#)  
[linkedin.com/in/michael-puleston](https://www.linkedin.com/in/michael-puleston)

## Glóð



Glóð is a counterweight task light designed for a corporate desk or statement piece in the home. It features retro forms throughout and patterning within the resin-cast shade. The retro elements are harmonised with industrial materials to create a sophisticated yet playful style.



## Fika Flask



FikaFlask is a sustainable series of stackable thermal flasks, made from upcycled sea waste. Designed for work, camping, hiking, or beach days, FikaFlask aims to make a positive impact on our environment. Versatile and innovative, it offers a modular design for large or small sets, making outdoor adventures more eco-friendly.



## Sara Roberts



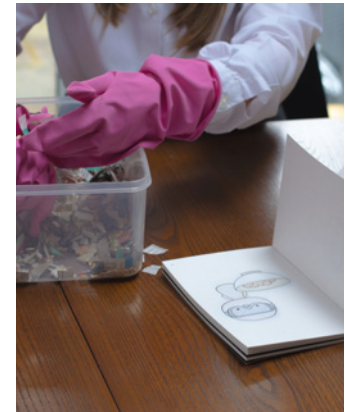
Driven by a desire for change, environmental challenges are always at the forefront of my mind when designing. I endeavour towards developing creative solutions in a holistic manner, which produce meaningful and insightful user experiences.

saraayeshadesign@gmail.com  
@saraadesign\_  
linkedin.com/in/sararobertsdesign

## Mush



Mush encourages creative and innovative design of environmentally beneficial products, by mixing waste and mushroom mycelium to produce new materials. Aimed at schools, Mush encourages an environmental focus through creative and open-minded thinking, through an engaging process of hands-on material creation.



## Are you #CrispIN or #CrispOUT?



Taking influence from British culture and behaviour, the design of an interactive point of sale display creates feelings of joy, excitement and competition, via a #CrispIn or #CrispOut of sandwiches voting display.



## Aaron Robinson



I have always enjoyed outdoor activities and have a keen interest in sustainable design. I have enjoyed working on projects that have allowed me to explore these interests further and look forward to working in these areas more.

aaronrobinson856@gmail.com  
@aaron\_robinson\_design  
linkedin.com/in/aaron-robinson-design

## Curve



Curve is a high-end, portable Bluetooth speaker for use around the home; designed for easier repair and disassembly by the user to enable greater product longevity. It's aimed towards those looking for a high-quality product that has class-leading sound quality.

## New Tent for Scouting



This project focused on creating a new tent for Scouting, designed to meet the needs of Scouts. It's easy for young people to put up, and having better, more accessible repair tools and information for leaders, ensures this tent a long and sustainable life.





## Samuel Robinson



I am always looking out for unique objects. In my design work, I thrive when creating functional designs and enjoy practicing the balancing act of combining shape with purpose. Reaching this balance whilst pushing its boundaries is what makes excited me about design.

Samrobinson00@outlook.com  
@samrobinson.design  
[linkedin.com/in/SamuelLRobinson](https://www.linkedin.com/in/SamuelLRobinson)

## Opal



Opal is a desk light that helps you achieve the optimal work-life balance. The shift towards millennials working from home presents new challenges not seen in a typical work environment. Opal is the solution aimed to improve the user's work-life balance by increasing productivity and well-being.



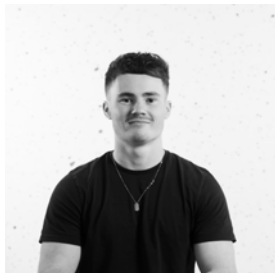
## FruitCase



FruitCase helps people preserve fresh fruit, by encouraging proper management of fruit storage. FruitCase sits on the kitchen counter and its storage-boxes help organise and move fruit into their appropriate groups and environments. This aims to reduce fruit waste, helping solve the problem of global food network-associated unsustainability.



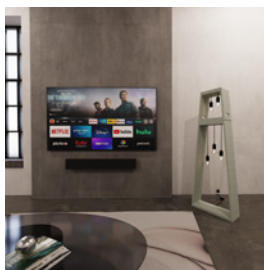
## Ben Roworth



As a dedicated designer, I am always driven by passion and a pursuit of excellence. From crafting stunning aesthetics, optimising functionality, or promoting sustainability, I strive to achieve the best outcomes for every project I undertake. I keep the consumer at the heart of my work, ensuring that every design meets the highest standards of quality and delivers an exceptional user experience.

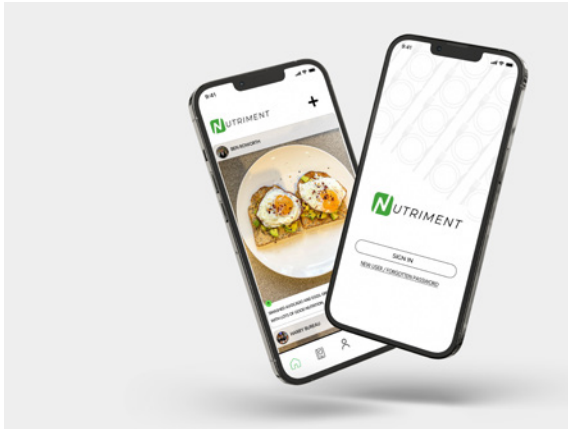
Ben.roworth@zen.co.uk  
[linkedin.com/in/benroworth](https://www.linkedin.com/in/benroworth)

## Blocks

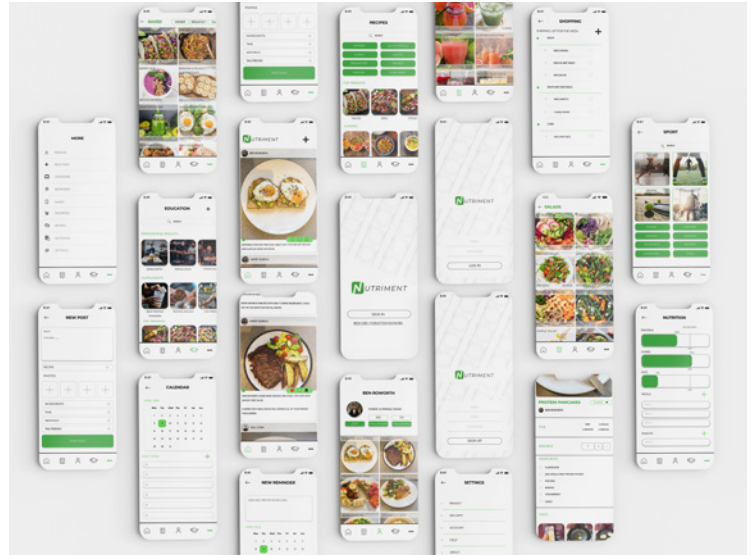


Blocks is a multi-functional table and floor lamp that can be connected to form one large piece. With its minimal industrial style, it is non-obtrusive, while being a statement piece for the owner's living room.

## Nutriment



Nutriment is a community-based nutrition-sharing app that is designed to help with the ever-increasing obesity levels and the NHS crisis within the UK. It aims to help people create a long-lasting healthy lifestyle through good nutrition.



## Eden Russell



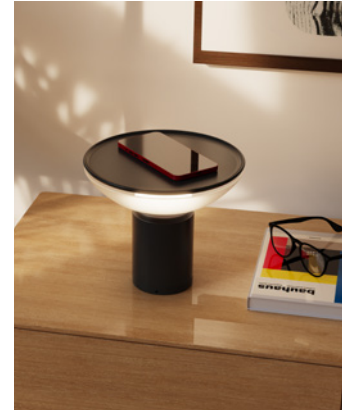
My experience within the ceramic and furniture industries has offered a firm foundation for my design approach. This, in turn, has resulted in an interest in both craftsmanship and product commercialisation. Through this approach, I aim to develop crafted objects that have a purpose, whilst challenging industrial processes and systems.

[edenrussell99@gmail.com](mailto:edenrussell99@gmail.com)  
[@edxndesigns](https://www.instagram.com/edxndesigns)  
[linkedin.com/in/eden-russell](https://www.linkedin.com/in/eden-russell)

## Hasami



Hasami is a portable lamp designed for the hybrid home. To respond to fast-paced trend-led design, Hasami was inspired by traditional ceramic forms and japandi design language to create a timeless table light. An effort was made to design a lighting product that can be versatile and adaptable to the environment of the modern home.



## Tops



Tops is a conceptual furniture range that aims to investigate current issues in the flat-pack furniture industry, in order to suggest viable answers. The product comprises of a universal base with modular and reconfigurable components. A second-hand platform accompanies the range in an attempt to democratise hand crafted flat pack furniture.



## Maitri Shah



I'm a designer who is fascinated by the transformative potential of products and the influence their forms have on transforming spaces. I believe that user experience is an integral aspect of product development and seek to create experiences that are both functional and visually engaging. My designs are centred on improving the user experience through fostering interaction with products.

maitrishah128@gmail.com  
issuu.com/maitrishah128  
@maitri\_design  
linkedin.com/in/maitridesign

## Acute Lamp



Acute is an adaptable table light with moving elements, allowing users to direct light as desired. The folded steel sheet base, inspired by origami, showcases the lightness of the material. The lamp's structure formed from single-sheet steel minimises production waste. It is designed with a range of three colours to complement any space.

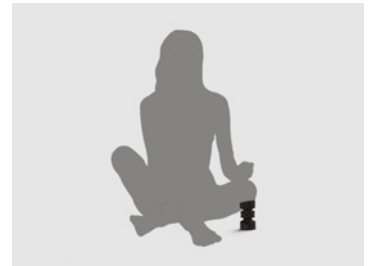
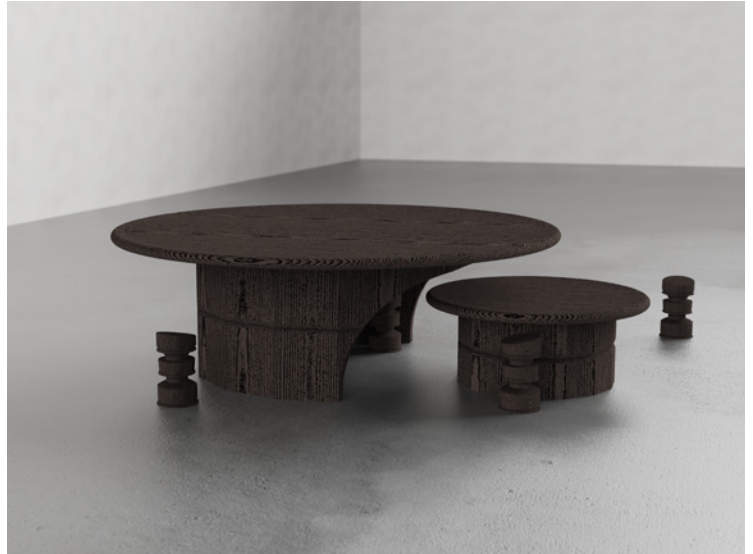




## Bethak Collection



Bethak is a furniture collection inspired by my Gujarati culture and Indian vernacular objects. Designed for dining on the floor whilst sat cross-legged, it includes a knee prop, two tables; a four-seater table called Mej, and a smaller modular version called Nano Mej. Tek is a contemporary take on a traditional dhichaniyu (knee prop), designed with a modernist Indian form and an ergonomic angled top.



## Henry Smith



Through bringing realistic, innovative, practical solutions to problems, I am keen to create unique designs that are well considered and have purpose. As a member of the RAF reserve (UAS), I am a clear thinker and am good at working through challenges - skills I have found invaluable as a designer.

henrysmith01@gmail.com  
@hws\_design  
linkedin.com/in/henrysmith

## Everlight



The Everlight combines timeless sophistication with modern simplicity and practicality. Taking retro inspiration, the lamp evokes a 1960's atmosphere while incorporating modern details for a clean design. The unique up-light design adds a beautiful radiance to any environment.

## Pioneer



Consumers have become complacent with modern razors that are expensive, bad for the environment, and cause skin irritation. With all the convenience and ease of a cartridge razor, the Pioneer uses a single traditional razor blade in a modern handle to give a smoother, cheaper and more environmentally friendly shave.



## Montel Smith



Having grown up in an artistic and cultural environment, my personal identity is the driving force of my artistic expression. I often create products tailored to my experiences and surroundings. As a result, my products are made to be supportive and empathetic, tailored to support a wide and diverse demographic.

[montel2110@icloud.com](mailto:montel2110@icloud.com)  
[@montel\\_designs](https://www.instagram.com/montel_designs)  
[linkedin.com/in/montel-smith](https://www.linkedin.com/in/montel-smith)

## World Cup Soft Drinks Bottle



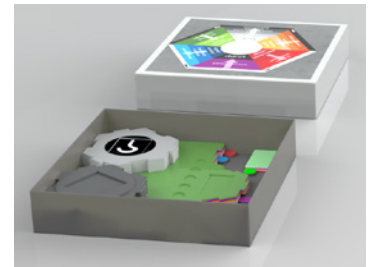
The project focused around creating a soft drinks bottle to build consumer excitement for the World Cup. The collectable coin and retro inspired body encapsulate positive themes of fun, inclusivity and nostalgia by exploring the youthful experience associated with the World Cup.



## Racial Diversity within the Design Industry



By researching how racial prejudices have formed and how they affect black, indigenous, and people of color, I designed an educational game board that encourages young designers of colour to join the design industry, whilst educating all on power structures within large industries. This raises awareness for a more inclusive work environment.



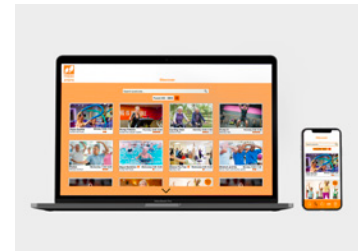
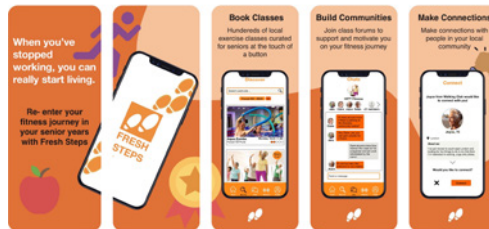
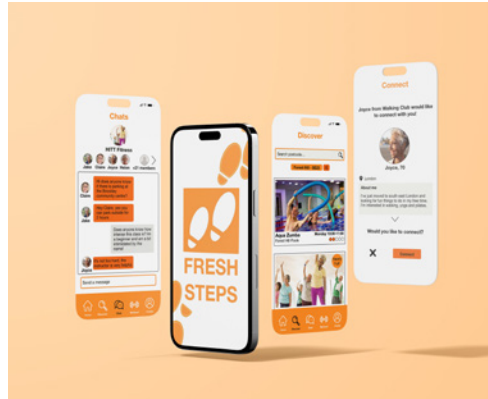
## Rhianna Smith



I am a versatile designer with an interest in exploring social issues. My process includes detailed research to understand behaviour and consumer interaction with a product. I'm inspired by creating functional, meaningful solutions that enhance the life of the user.

Rhiannasmith416@email.com  
@rhiannasmithdesign  
linkedin.com/in/rhiannasmith

## Fresh Steps



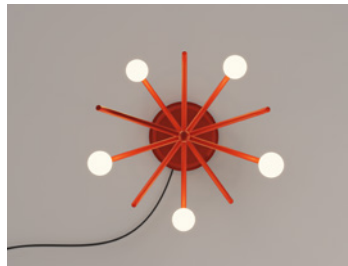
Fresh Steps is an app for seniors to discover and book exercise classes in their local area, creating a community around exercise for older generations. The app has been designed to help tackle the impending health risks coming as a result of rising energy and living costs.



## Balance



Balance is a contemporary office coat stand that welcomes you into work, lighting up as you hang up your coat. Balance signifies your presence in the office, providing a counterbalance to the loneliness of remote working during the pandemic and illuminating the new era of hybrid working.



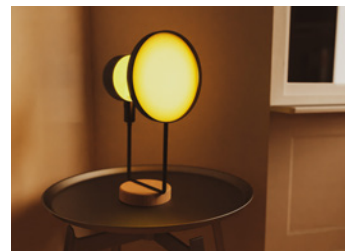
## Owen Spillett



My experience as an emerging designer has inspired me to center my process on creating flexible design solutions for consumers, giving them a level of personal control over their products and ensuring the products' longevity in a changing world.

[owen@spillett.org](mailto:owen@spillett.org)  
[@owen.spillett\\_design](https://www.instagram.com/owen.spillett_design)  
[linkedin.com/in/owenspillet](https://www.linkedin.com/in/owenspillet)

## Canvas



A colourful lighting solution that casts a soft, ambient glow over a fabric surface while providing a vibrant background behind the object. A user can alter the colour of the light to create a specific mood or to fit their personal taste.

## Frame Works



Frame Works offers a variety of components to help customers DIY their own furniture, fostering a branded DIY movement that promotes the use of upcycled materials or gives customers the freedom to select the materials that best suit their chosen environment.



## Archie Stevens



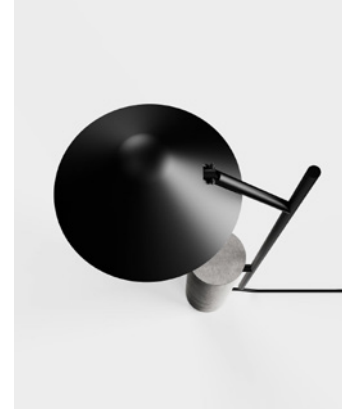
I love the process of seeing a basic sketched idea being turned into life, and the learning that happens in between. Through early-stage ideation, to prototyping; the challenge of making beauty functional is what really excites me as achieving that is what makes for timeless, classic design.

[archie.stevens@icloud.com](mailto:archie.stevens@icloud.com)  
[@astevens.design](https://www.instagram.com/astevens.design)  
[linkedin.com/in/archie-stevens](https://www.linkedin.com/in/archie-stevens)

## Lume Table Lamp



Lume Table Lamp combines concrete and black painted steel to create a striking, brutalist statement for any interior space. The contrast of materials and the minimalist design, with muted colours, enhance an industrial aesthetic. The lamp's subtle styling makes it versatile and able to blend with any interior design.



## Heathcoat Lounge Chair



The Heathcoat Lounge Chair is designed to be a seamless addition to an existing living space, incorporating assistive features in a discreet way. By bringing attractive, contemporary styling and sustainability to users with knee and hip problems, it offers assistance without encouraging dependency.



## Josh Stinson



As a product designer with a passion for sports, I am driven to create innovative and functional designs that enhance the athlete's experience. With expertise in materials and production processes, I aim to design products that not only perform but also look great. I strive to push boundaries and incorporate new technologies into my designs, resulting in top-quality products that resonate with athletes and sports enthusiasts alike.

[Joshstinson@outlook.com](mailto:Joshstinson@outlook.com)  
[linkedin.com/Joshua-Stinson](https://www.linkedin.com/Joshua-Stinson)

## La Manija



La Manija is a rubber over grip for padel rackets which uses grooves and bumps to guide the hand into the correct conitnetal grip. This will be part of a range that slowly allows the skill and technique to become habitual and allow the player to prosper in their future padel career.



## Mokuhen



The Mokuhen Bluetooth speaker system consists of two devices, allowing the user to listen to music not only at home, but also to attach a smaller, second speaker that can be carried inside a bag and brought with them on the go.



## Rio Tsui



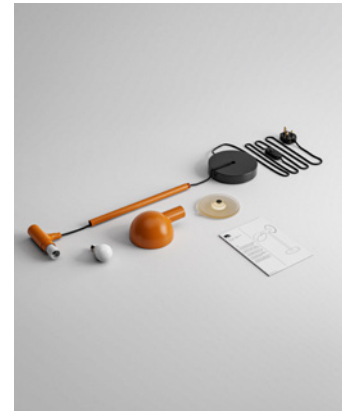
Product design gives me the chance to apply the technical knowledge I have learnt in a creative way. I aspire to make designs that have a positive impact on the user's life, and designs that connect people, whilst staying simple, useful and responsible.

[riotsui20000810@gmail.com](mailto:riotsui20000810@gmail.com)  
[@rio\\_tsui2000\\_design](https://www.instagram.com/rio_tsui2000_design)  
[linkedin.com/in/rio-tsui-design](https://www.linkedin.com/in/rio-tsui-design)

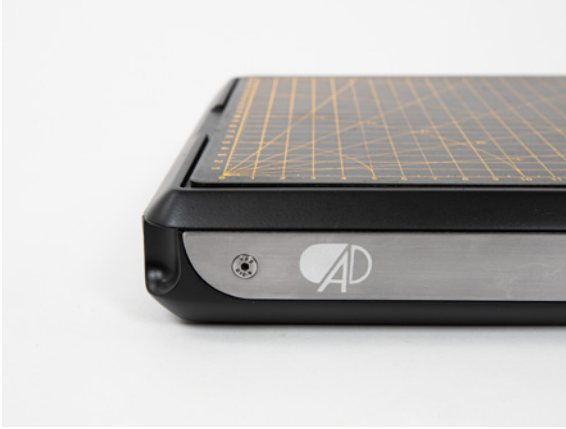
## Flex



FLEX is a multifunctional table lamp which transitions from a cool toned task lamp while working to a pleasant, warm tone that is ideal for relaxing in when a shade cover is placed over the light. This creates a relaxing environment for the user after they finish work.



## Advance



Advance is a modelling kit designed for scale model makers of various ability levels. The goal is to enhance the workspace and give the user the opportunity to develop a habit of having an organised workspace. As the user develops their skills, they can purchase more tools that can be integrated to the starter kit.



## Joe Turton



I am passionate about creating aesthetically pleasing and functional designs that prioritise sustainability. With a deep respect for the environment, I believe that sustainable design is the key to a better future. By incorporating sustainable practices into my work, I hope to inspire others to do the same.

joeturton44@gmail.com  
@joeturtondesign  
linkedin.com/in/Joe-Turton

## Pillar



Pillar is a portable Bluetooth speaker that features an innovative circular design that allows for easy disassembly and reuse of its components, thereby reducing waste and encouraging sustainability. The interactive features link to audio products of the past, giving it a timeless aesthetic that blends seamlessly with any decor.

## Champagne Mtn



The circular ski mittens are designed with durability, functionality, and eco-friendliness in mind. Made from only two materials, they feature a waterproof and breathable membrane combined with a detachable interior lining. The mittens are designed to be easily disassembled to continue their circular lifecycle, ensuring minimal environmental impact.



## Sejal Vachher



I am fuelled by finding inspiration in daily life and generating eccentric ideas that lead to innovative solutions. Working with live briefs at university has helped me understand my design drivers and shape my values, with a particular focus on circular sustainability.

[sejalvachher@email.com](mailto:sejalvachher@email.com)  
[sejalv.myportfolio.com](https://sejalv.myportfolio.com)  
[@ghaanipaddha](https://www.instagram.com/ghaanipaddha)  
[linkedin.com/sejalvachher/](https://www.linkedin.com/in/sejalvachher/)

## Satchel



A stainless-steel Bluetooth pocket speaker, that contributes to the sustainable circular economy. This speaker was designed keeping in mind the importance of design for disassembly, which directed the sleek and minimal form.



## Jalse



Jalse is a compact rainwater harvesting system, built for vertical housing and small families. Made from individual vessels, this modular design attaches to any balcony, and collects enough water for a household of two people. Water scarcity presents an existential threat to England, and while the rainy nation predicts to be in a state of emergency in the coming years, it's time to take action now. Before committing to permanent sustainable solutions like building underground tanks and rainwater management systems, it is essential to develop sustainable habits. Jalse is a product that enables its users to develop an environmental consciousness easily and early.



## Isabel Ward



I am a passionate designer who enjoys the physical making process. Sustainability is a key value of mine which I implement into my designs wherever possible. This includes transforming waste materials into new products.

imw105@aol.com  
@izzywarddesign  
linkedin.com/in/isabel-ward/

## Reflect



This jewellery collection highlights the global problem of ocean plastic waste and aims to educate people on this issue. The pieces are made from recycled silver and melted ocean plastic, with the forms and textures being inspired by the ocean. The jewellery and packaging can also be fully recycled.



## Fin Wells



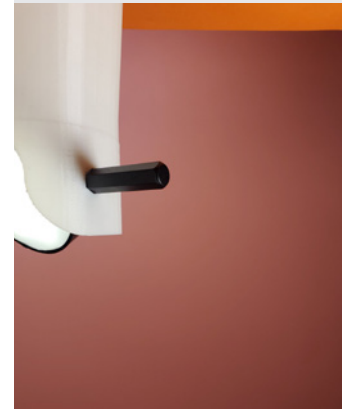
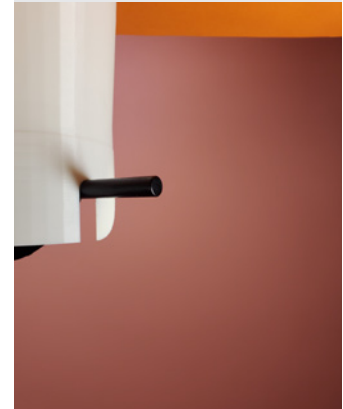
A deep-rooted artistic background coupled with a lingering proclivity to create, fuels my enthusiasm for design. I endeavour to portray this within my work.

finwells01@gmail.com  
@fdwells\_design  
linkedin.com/in/findevereuxwells

## Jingyi



The Lume table lamp combines concrete and black painted steel to create a striking and brutalist statement for an interior space. The contrast of materials and the minimalist design, alongside the muted colours enhance a contemporary industrial aesthetic.



## Sati



Blending the natural minimalism of Scandinavian design and tradition craft of Japanese design, Sati, the Japandi inspired floor chair, aids slow living, not only through its intertwining aesthetic, but through the practice of mindfulness.



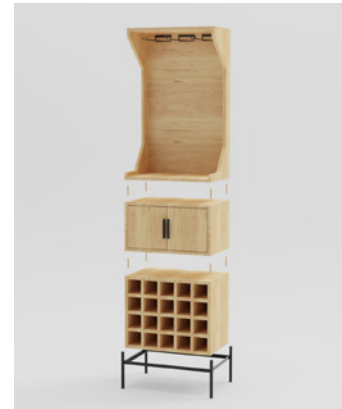
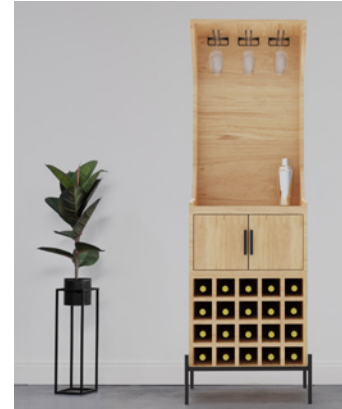
## Isaac Whalley



I am designer-maker with a love for designing contemporary industrial furniture made from reclaimed raw materials. I also enjoy using CAD throughout my process to develop my work.

[isaac-whalley@hotmail.co.uk](mailto:isaac-whalley@hotmail.co.uk)  
[linkedin.com/in/isaacwhalley/](https://www.linkedin.com/in/isaacwhalley/)

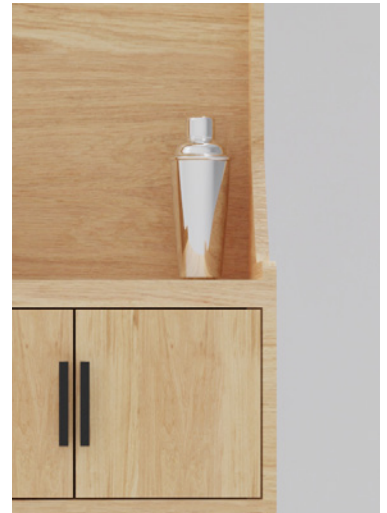
## BeverageBespoke







For those enjoying a the occasional tippie in the comforts of their home, this drinks cabinet will bring the drinks, the aesthetic and the convenience. The ability to personalise the cabinet allows the customer to create a drinks cabinet that will cater to their exact needs, leaving you with a piece of statement furniture you can be proud of.



## Mei Yin Wong



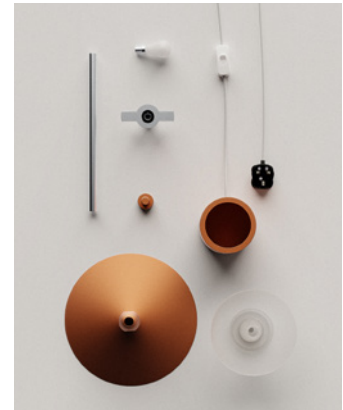
As a creative designer, I am passionate about making practical products and reinforcing them high-quality visuals. I believe design is all about being inquisitive and learning about the product's story. My design journey has been driven by a concentration on details and aesthetics, which has allowed me to explore various chances to grow my design expertise.

[meiwong.mwcpd@email.com](mailto:meiwong.mwcpd@email.com)  
[mwcpd.myportfolio.com](http://mwcpd.myportfolio.com)  
[@mwcpd](https://www.instagram.com/mwcpd)  
[linkedin.com/in/wongmeiyin](https://www.linkedin.com/in/wongmeiyin)

## Echo



Echo is a modern table lamp with a nostalgic aesthetic, that can be adjusted to create a comfortable atmosphere in both the bedroom and the living room.



## Inclu

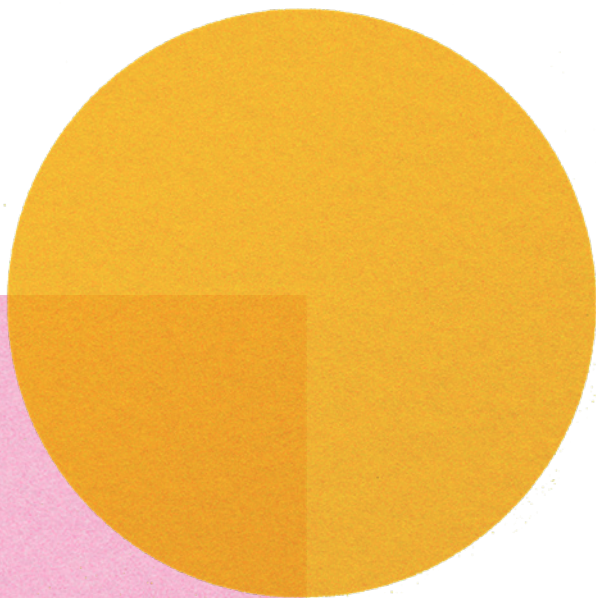
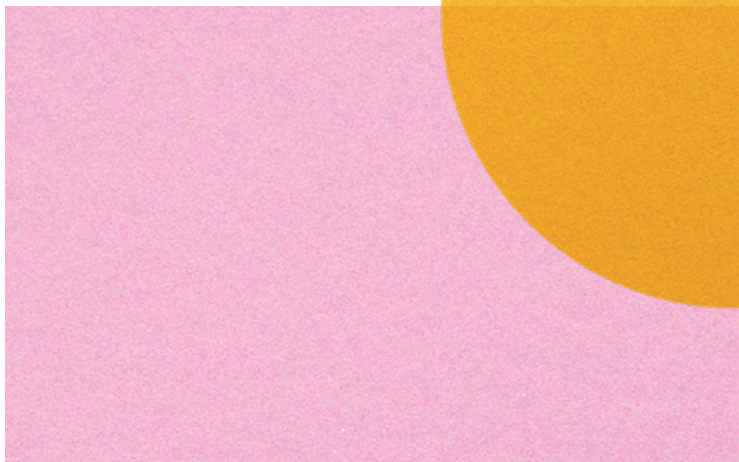
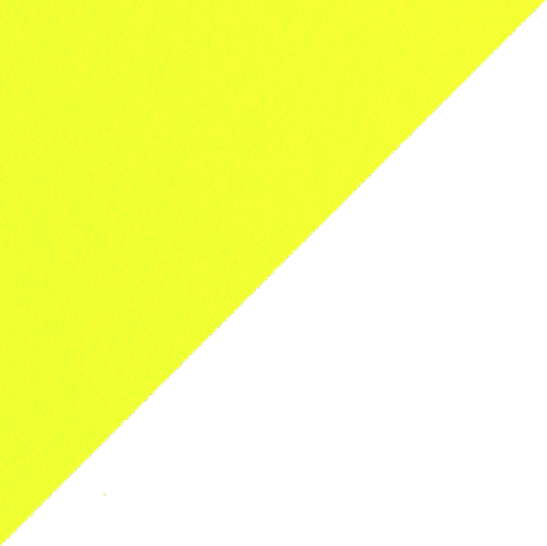


Inclu is an inclusive colour mixing tray that is designed for everyone and allows people with colour blindness to explore colour when painting. The design enhances the painting experience while also preserving the pigment in good condition when used in various situations. The removable feature allows artists to adapt it to their painting journey and style.

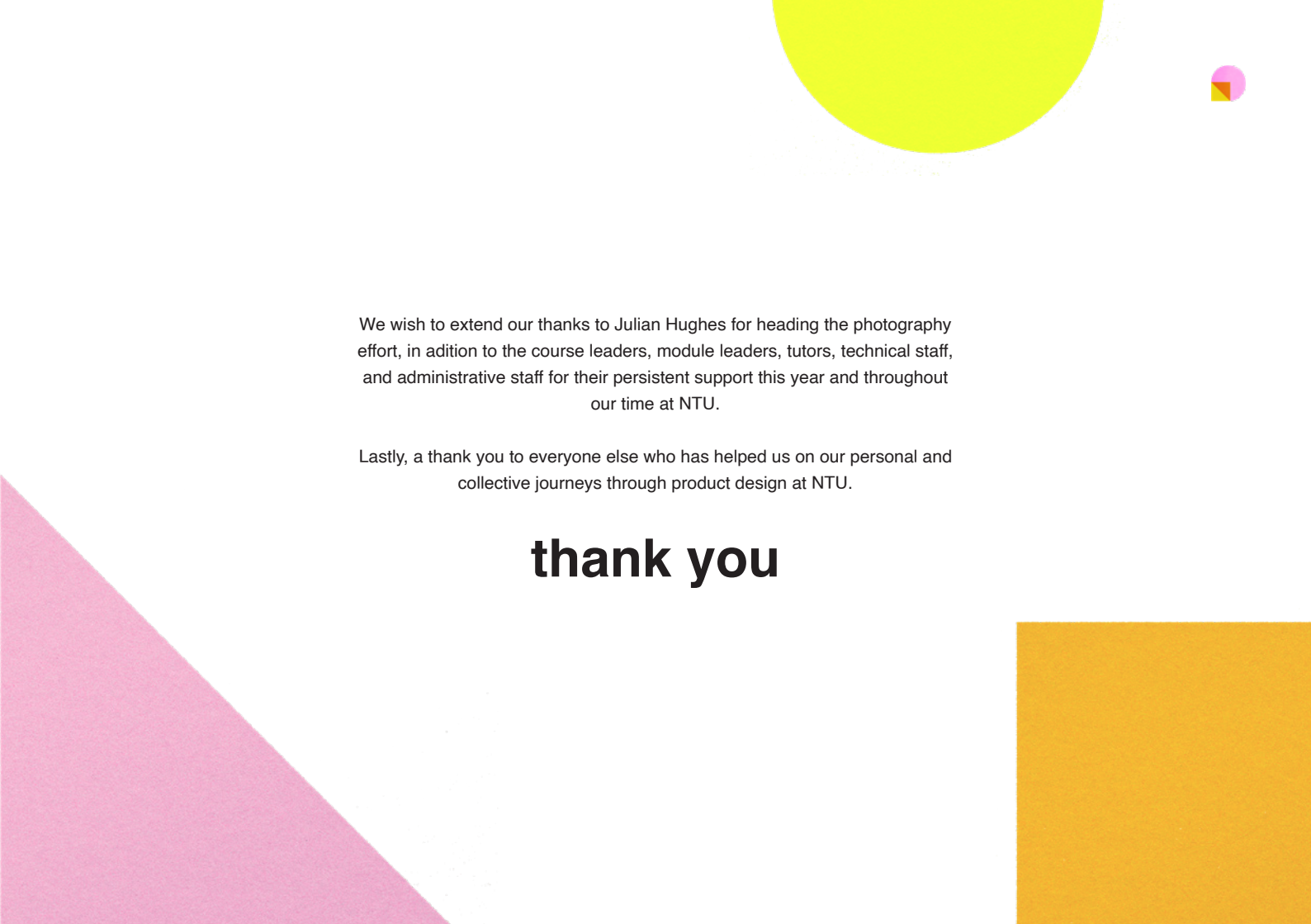












We wish to extend our thanks to Julian Hughes for heading the photography effort, in addition to the course leaders, module leaders, tutors, technical staff, and administrative staff for their persistent support this year and throughout our time at NTU.

Lastly, a thank you to everyone else who has helped us on our personal and collective journeys through product design at NTU.

**thank you**

# academic staff

Grant Baker  
Dan Bartram  
Charlotte Bradford  
Elliot Bradley  
David Bramley  
Emily Brook  
Ellen Burke  
Simon Cahil  
Ian Campbell Cole  
Allan Cutts  
James Dale  
Fiona Davidson  
Dr. Harriet Edwards

Dr. Rebecca Gamble  
Chris Hanley  
Suzannah Hayes  
Alex Hellum  
Julian Hughes  
Tom Hurford  
Paul Kennea  
Chris Lamerton  
Emma Lane  
Richard Malcolm  
Hanna Manley  
Liam Martin  
Theresea McMorro

Craig Mutch  
Kathryn Pashley  
Dr. Phillipa Martin  
Daisy Pope  
Max Pownall  
George Riding  
Rob Scarlett  
Dr. Luke Siena  
Nikki Sizer  
Dr. Joseph Stewart  
William Warren  
Karen Winfield  
Josh Woolley



# technical staff

Susan Allcock  
Insa Ba  
Mark Beeston  
Lee Bollard  
Steve Chamberlain  
Alan Chambers  
James Cooper

Charlie Dennis  
Dave Edwards  
Chris Forbes  
Matt Garlick  
John Grimes  
Ben Hutton  
Graham Knighton  
Steve Marriott

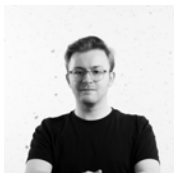
Dave Nix  
Emily Quinn  
Jenny Savage  
Carl Smith  
Kerry Truman  
Anna Tubey  
William Zindoga

## **ntudi committee**

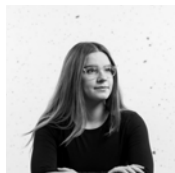
### **branding and print**



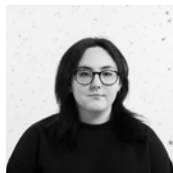
Sarah  
Henderson



George Hill



Libby Manning



Sophie Puffett

### **photography**



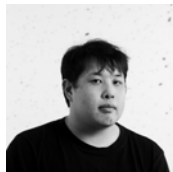
Eden Russell



Reeve Stevens



Sejal Vachher



Joey Wong

### **website**



Thomas Bee



Molly Harkin

### **social media**



Daisy  
Balasingam



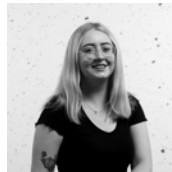
Sukhvir Ghag



Molly Gurr



Manaz Nariman



Erin Parker

## film and animation



Joe Barfield



Hannah Cox



Abbie Foggo



Luke Hedley

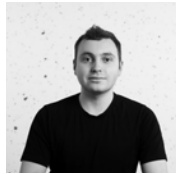


Francis  
McDonald

## exhibition



Guto Davies



Josh Dennis



Robert Evans



Alex Harwood



Anya Pivcuka



Aaron  
Robinson



Maitri Shah



Isabel Ward



ntudesignindustries.com  
@ntudi





**BA (Hons) Product Design**