

The background features abstract geometric shapes in orange, yellow, and pink. An orange triangle is in the top-left corner, a yellow square is in the bottom-left corner, and a pink circle is in the bottom-right corner. The text is centered on a white background.

primitive shapes

ntu design industries 2023

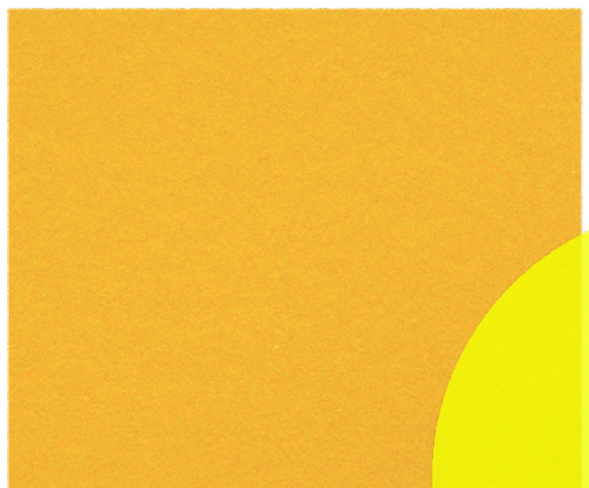


Just as education forms the foundations of our unique and diverse paths, primitive shapes provide the base of complex forms.

Like primitive shapes we too evolve: Through learning we grow and mould into new structures; Like Boolean operations we combine through collaboration; And through sharing knowledge we divide, giving others the chance to develop from our experiences.

We've grown resilience through university, building the foundations we need to stamp our authority and inspire our industry.

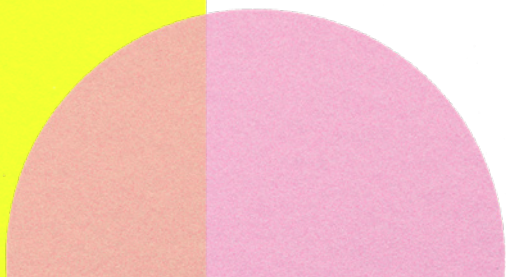
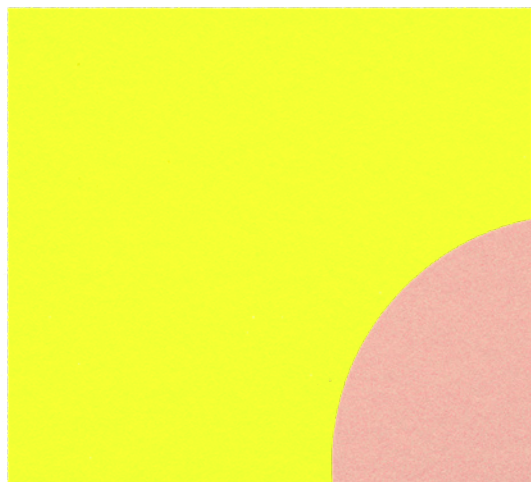
We all start as primitive shapes.





contents

Foreword	7
BA (Hons) Furniture and Product Design	10
Thank You	111
Credits	112





James Dale
Head of Product Design

We have spent a great deal of time in the Product Design department this year experimenting with the use of Artificial Intelligence (AI) software as a creative tool, to enable our design students to explore ideas and approaches to their work that they may have never normally considered. Rather than some of the kneejerk negative reactions to the use of AI in higher education, our approach has been to experiment, test and prototype the technology, to see what it can achieve and to try and understand the limitations and challenges that this new technology represents.


So far, the opportunities that AI offers are fascinating, but the core to how we engage with this technology, ensuring that our students can curate and evaluate the information with an open mind and a critical eye while clearly referencing the input and role that the AI has played in the creation of our products. But rather than stand on the beach calling on the next wave to turn back, we need to accept that change is here, evolve and move forward positively.

With that in mind, I asked OpenAI.com to suggest an inspirational forward to this year's Product Design brochure; it offered up a twenty-year-old quote from Steve Jobs talking about the iPod (remember that!) and the sort of glowing platitudes you have probably come to expect from my introductions to brochures like these over the years (which may well have been drawn upon by the AI in order to write its own version).

So instead, I will simply say that we are here today to honour the 'actual intelligence' of these supremely creative, passionate, design graduates and their dedication, hard work and good humour; it has been a pleasure working with you, and for you. As a department we wish you all the best in your future careers – remember to keep it real (even when some of it may be unreal).

Jim





BA (Hons) Furniture and Product Design

Our BA (Hons) Furniture and Product Design course at Nottingham Trent University is focused on creating innovative items for both the domestic and contract markets, from furniture to interior products and homeware.

Design through making is key; work varies from the commercial to the more conceptual, with experimentation of material and process strongly encouraged.



Fiona Davidson

Course Leader, Furniture and Product Design BA (Hons)

The intake of 2019 was the largest year group of students I have experienced in my 20+ years of teaching; that in itself was a challenge. Throw in a world-wide pandemic and the ensuing restrictions and isolation that Covid 19 rained down on us, and the challenge became enormous. For a course that thrives on a vibrant studio culture and empirical testing of materials and processes in workshops, there is no doubt that your university experience was the most disrupted of all recent FPD cohorts.

Through it all, we worked like crazy to give you as close an experience to normal as possible. And you responded with resilience and ingenuity as we negotiated the challenges together, albeit often through a screen crowded with cardboard models. We found new ways to think, to learn and to communicate with one another; lessons that we would never have learned without a pandemic. It is no accident that many of you have chosen to focus on issues of mental health and well-being in your final projects; much of your heightened empathy stems from personal experience from those Covid years.

The most essential skill to teach students is to think for themselves and to form their own meaningful design philosophies. Thinking is the absolute core of design; vital to your role of providing constructive criticism on how we live today and in the future. This you have in spades...

And so to final year; never before had I experienced a final year group who still barely knew each other; and never before had a final year group had so little workshop experience and making knowledge.

Never, too, have prototyping skills been acquired at such speed! From making a chair in a day at the start of this year, your pent-up hunger for mocking-up quickly transformed the studio into a chaotically vibrant creative making space. Then, the study trip finally morphed you into a real cohort; the transformation in the studio was tangible; suddenly you were friends and peers proffering invaluable advice and feedback to each other.

Please continue to cherish and grow those relationships. Support each other as you evolve onwards. Keep chasing the acquisition of those vital empirical skills you missed out on in the early years; seize every opportunity to further develop your understanding of materials and processes, as you sail off into your futures. You will never regret it...

Bon voyage!



Class of 2023 - BA (Hons) Furniture and Product Design



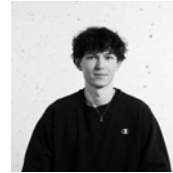
Joe Barfield



Dan Bedwell



Xander Bennett



Sam Bird Smith



Kate Bolton



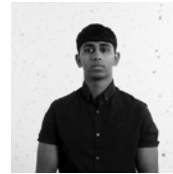
Emma Booty



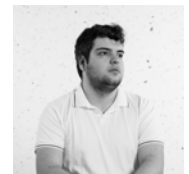
Christopher
Broens



Harry Buxcey



Priteche
Carsane



Mattheus
R.S
Casagrande



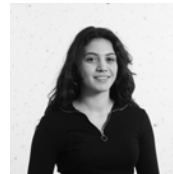
Joe Cassidy



Amy Cresswell



Thomas Crimp



Giorgia D'Agate



Guto Davies



Eleanor De
Boise



Will Doherty



Zachary
Duncan-Johal



Freya Field



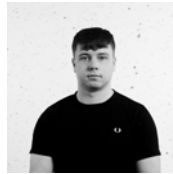
Abbie Foggo



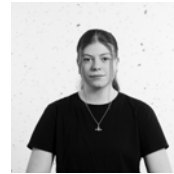
Adam Foley



Sukhvir Ghag



Daniel
Goodhand



Claire Graham



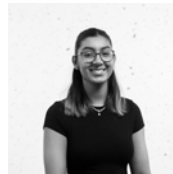
Molly Harkin



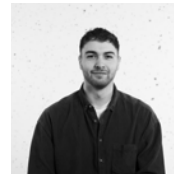
Sarah
Henderson



Merry Kirkwood



Chhaya Lad



Fraser
Moorcroft

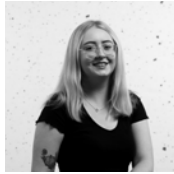


Ed Mountfort

Class of 2023 - BA (Hons) Furniture and Product Design



Ethan
Newsome



Erin Parker



Will Revill



Liam Reynolds



Joe Schüpp



Mim Sharrocks



Lillie Smith-Lake



Joel Stern



Reeve Stevens



Lucy Steward



Kieran Thomas



Lizzy Tucker



Ben Walker



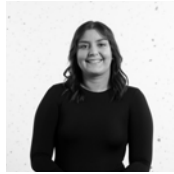
Michael
Wallace



Gemma
Warden



Tobias Williams



Emma
Woodhead



Zhiyuan Zhang



Janis Zube



Joe Barfield

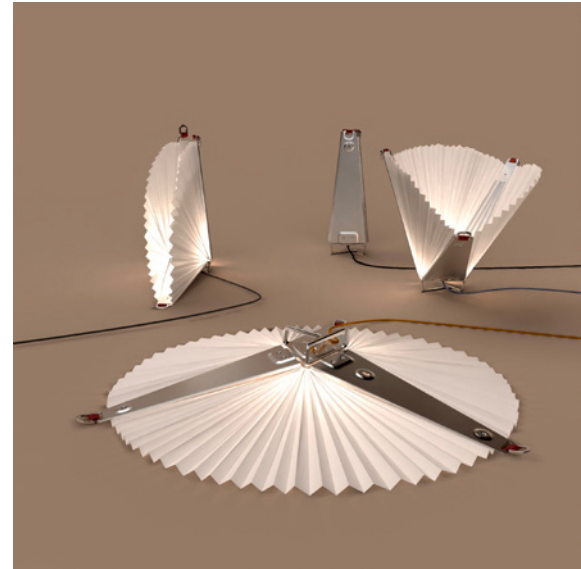
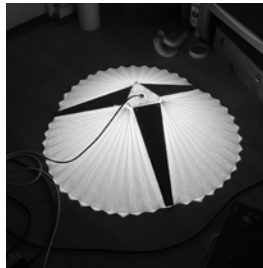
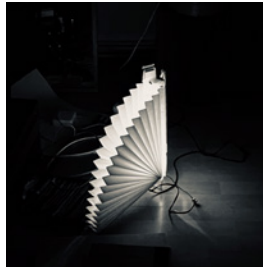


When designing, I prioritise originality, quality and usefulness. I always look for the alternatives. The design is just as important as its surroundings and I am driven to optimise spaces so they work in a unique and fulfilling way.

Being open minded, straightforward and interested inspires my projects.

joe.barfield56@icloud.com
fieldbar.uk
@fieldbar_uk
linkedin.com/in/joegrbarfield/

Deployable Structure - Lamp



The product is an all-round portable lamp for a spirited lifestyle, inspired by the utility of camping equipment, traditional paper-craft and communication through code. The deployable structure can change shape in order to significantly change its size. It is made from sand cast aluminium and waterproof, tear-proof paper.

Field Storage & Work System



Low profile storage and work-boards designed for the at-home working space.

Boost your organisation and spontaneity with customisable & portable self-preset work-boards, which make setting up and packing away your workspace more efficient. Curate personalised preset boards and use them interchangeably throughout your day.



Dan Bedwell



A passion for circularity and sustainability within design guides my style and interest in exploring materials. I want to show people the beauty I see in imperfection and make them fall in love with the stories that it can tell.

bedwd001@email.com
@dan_bedwell_designs
linkedin.com/in/dan-bedwell

Bio-Graphy



Bio-Graphy is a bookstand with the aim of encouraging reading by creating an immersive reading experience. The book stand uses one material and simple processes to ensure longevity, and an easy way to repair and recycle at the end of life.



Altered



Altered is a range of cushions exploring and highlighting the beauty and individuality of waste streams from alteration shops. The range celebrates colour and playfulness whilst giving meaning and purpose to a material previously thought of as valueless and unwanted.



Xander Bennett



I aim to create designs that provide functional integrity with an enduring aesthetic, positively changing people's lives in the way they interact with their environment, family and friends. I enjoy the challenge of solving problems simply and elegantly to produce considered and honest designs.

xanderbennett@gmail.com
@xanderbennett_designs

Rak



Rak is a modular range of simple, functional, versatile furniture. It can be used in a number of settings and can be customised to suit the needs or desires of the client.

Porta



Porta is a portable rechargeable lamp which can be used both indoors as a bed side lamp as ambient lighting, and outdoors for summer evening parties or even at the beach. I wanted to create an object that would help the user feel a sense of wellbeing, comfort and companionship, choosing materials and textures which reflect that.



Sam Bird Smith



As a designer, simplicity and sustainability are at the forefront of my values. I aspire to create products that are simple, reliable, high quality and environmentally friendly. I am interested in new, experimental materials and processes, and how they might potentially replace more unsustainable methods.

swbirdsmith@hotmail.co.uk
@sambirdsmithdesign
linkedin.com/in/sambirdsmith

Phyto



Made from 3D printed algae-based bioplastic, this project aimed to explore the use of a unique, sustainable alternative to synthetic plastic. The shapes of the lights are inspired by the cell structure of algae, to represent where the material has come from.



Plinth



Plinth is a modular display stand, designed to exhibit guitars and show off their beauty. When a guitar is placed on the stand, Plinth becomes partially hidden by the body, resulting in the guitar being the main focal point and the stand receding slightly into the background.



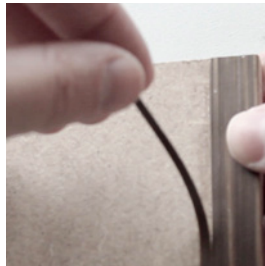
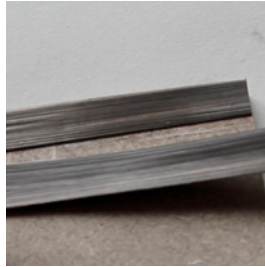
Kate Bolton



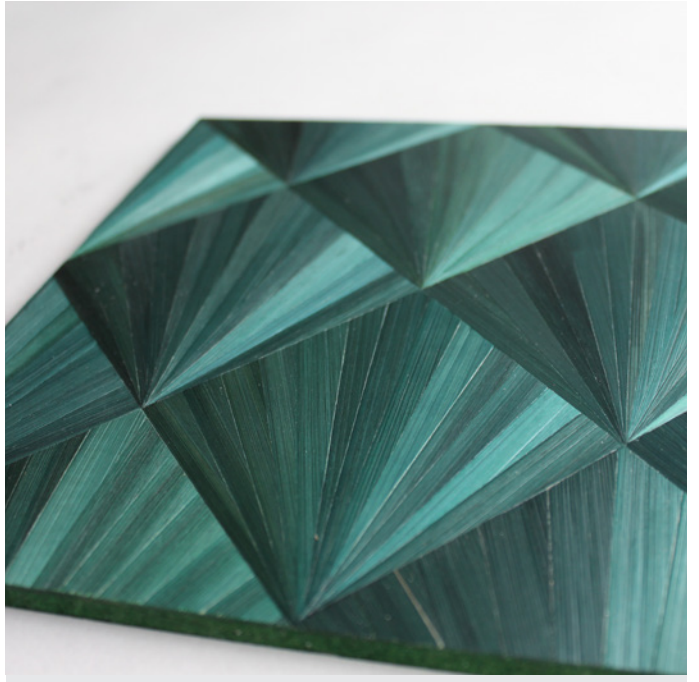
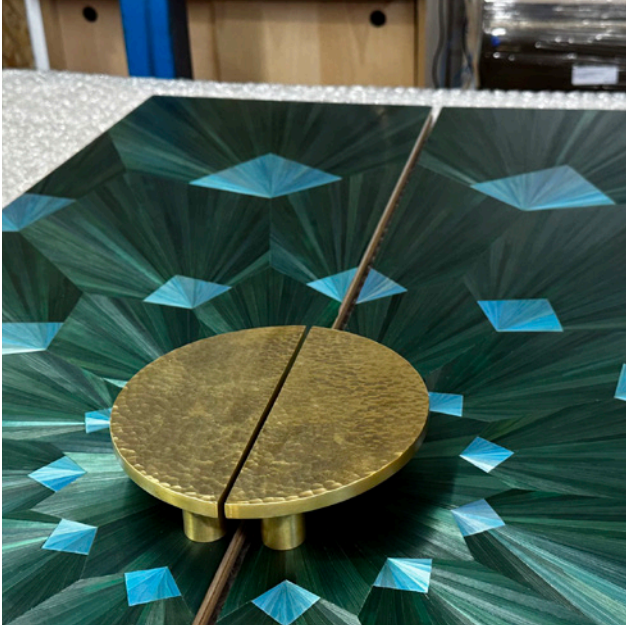
I like to think of myself as a designer of high end, luxury furniture as I'm drawn to the finer details. I try to create furniture with a presence in any room and tend to be material-led. I would like to continue exploring with materials after university and pursue my love for making furniture and designing.

kate.bolton4@btinternet.com
@kate.bolton.designs

Bespoke Drinks Cabinet



A luxury, bespoke cocktail cabinet exploring the use of straw marquetry to add colour and presence to any room. The process requires skill and plenty of patience, however the results are very rewarding.



Emma Booty



As a detail-oriented designer, I'm passionate about working hands-on, mainly with timber, to create functional and visually appealing designs. I find myself designing space-saving multifunctional products and have a keen interest in designing for mental health. My aim is to work for an ethical furniture company where I can combine my design and making skills.

emmabooty.designs@gmail.com
[@emmabooty.designs](https://issuu.com/emmabooty)
[linkedin.com/in/emma-booty](https://www.linkedin.com/in/emma-booty)

Ruhe



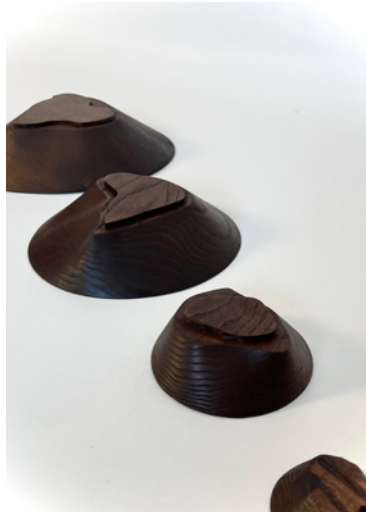
Ruhe is an oversized lounge chair designed to help users detach from fast-paced society and unwind. Inspired by the Danish concept of Hygge, it creates a cosy nook for activities like reading, meditating, or spending time with loved ones and pets. Its aim is to promote work-life balance and positive mental health.



Terra



The Terra collection is a versatile tableware collection, designed to enhance social dining experiences while also serving as a stunning centerpiece for your dining table. Inspired by topographic contour maps from various locations, the collection features functional and decorative pieces that seamlessly blend into any dining setting.



Christopher Broens



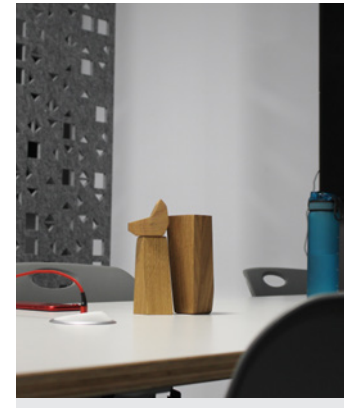
I approach my work as a designer with a practical mindset, constantly looking for new methods to innovate and create designs that are motivated by the world around. I am passionate about finding new ways to incorporate natural materials and sustainable processes into my work, while also prioritising functionality and usability.

Cbroens@mail.com
[@Chris.broens_design](https://twitter.com/Chris.broens_design)
[linkedin.com/Christopher-Broens](https://www.linkedin.com/Christopher-Broens)

Desk Pets



Desk Pets are designed to bring belonging and personalisation into a hybrid office space. With their playfulness and adaptability they are the perfect product to bring joy into the office without being inappropriate or childish.



The Boomerang Floor light



The Boomerang Floor Light has an elegant and contemporary design that enables flexible control over the pattern and intensity of the light.



Harry Buxcey



I am a designer-maker who enjoys experimenting with materials because it allows me to explore new possibilities and push the boundaries of traditional design. By trying out different materials, I can create unique pieces that stand out and showcase my creativity and innovation.

harrybuxcey@icloud.com
[@hbuxceydesign](https://www.instagram.com/hbuxceydesign)
[linkedin.com/harry-buxcey](https://www.linkedin.com/company/harry-buxcey)

Stool L



Stool L is a refined and sophisticated furniture piece that was designed in line with Terrence Conran's design philosophy. The L shapes on the top make a subtle hint towards the 50-year anniversary of one of his greatest achievements, while the contemporary form brings in inspiration from his early career role models.

Rocker B



Rocker B is a plywood rocking chair, offering functionality, comfort, and sensory components for individuals with Autism and ADHD. The ergonomic design provides optimal support, while the adjustable arms provide a hugging feeling. Soft, removable fabric elements are strategically placed throughout the chair offer a variety of textures and sensations for relaxation.



Mattheus R.S. Casagrande

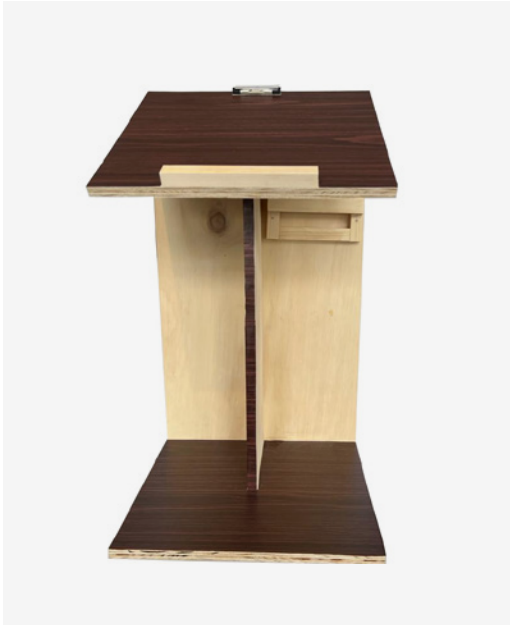


I am inspired by the way an artist's work can evolve over the course of their life - a journey that can be enjoyed by many. This year I've enjoyed working with other companies for the commercial project and hope to work more with established brands in the future.

mattcasagrande@outlook.com
[@mcasagrande_designs](https://www.instagram.com/mcasagrande_designs)
[linkedin.com/in/mattheuscasagrande](https://www.linkedin.com/in/mattheuscasagrande)

Drawing Board





Colouring Away is a simple desk, designed to be used on the sofa to give the user more comfort while colouring. Colouring can help with anxiety as a way to relax one's brain, so having a simple space where you can do this goes a long way in helping someone deal with the stresses of day to day life.



Joe Cassidy



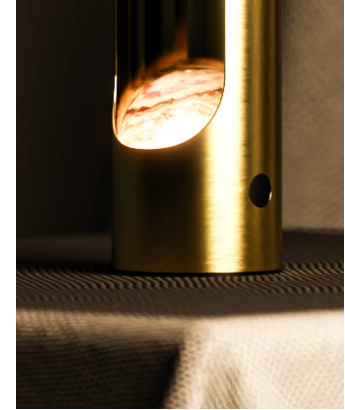
Favouring understated yet functional design with a focus on product longevity, I find inspiration from designers such as Dieter Rams, Jasper Morrison, and Jean Prouvé. I integrate CAD software into my design process to bring my concepts to life, and will continue honing my skills while pursuing a designer-maker career.

joecassidy52@gmail.com
@j.cassidy_design

Generation Lamp



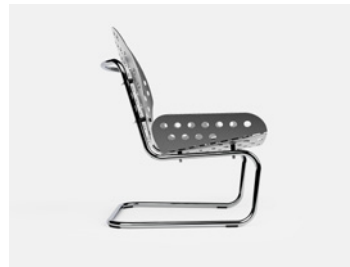
The Generation Lamp is a compact lighting solution with a timeless design, inspired by classic candle holders. Made of brass and onyx, proper maintenance enhances its longevity and durability, creating a valuable connection between the user and the product. This makes it suitable for passing down through generations.



Perfora



Perfora is a low-seated lounge chair made from perforated sheet metal, bent steel tubing, and a range of woven textiles. The chair strikes a balance between pre-industrial and industrial materials, and utilizes hand-spun textiles in the uniform perforations of the seat and backrest for a harmonious design.



Amy Cresswell



I would describe myself as more of a maker than a designer, as I often incorporate craft and art within my work. I have a particular interest in taking traditional material processes and reimagining them in a fun new way.

12cresswella@gmail.com
Instagram @amy.creates
linkedin.com/in/amycresswell

Falling Leaves

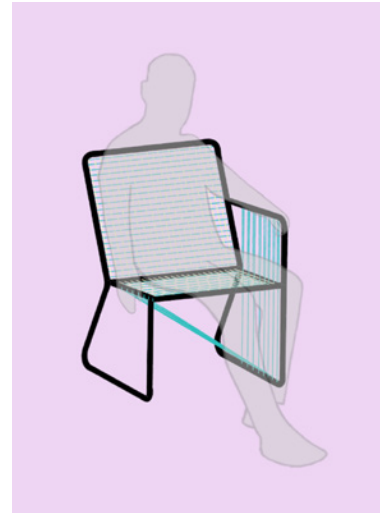
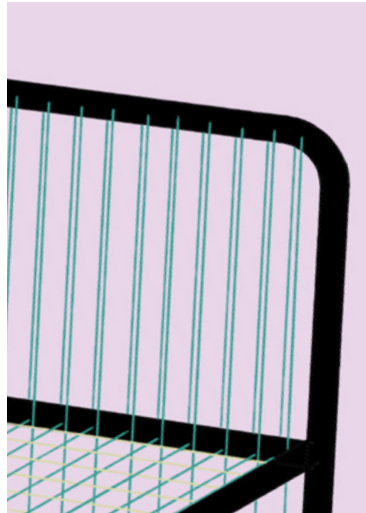


This process-led project explores the experimentation of a stain resist method onto ash timber. The outline of leaves are resisted over numerous layers of coloured stain. Resist methods are already used within textiles and ceramics, but this is the first documented use on timber.

Holme



Holme is a woven chair inspired by the textile industry of my home city. The warp and weft of the weave follows the two planes of the chair meeting to form a strong structure on which to sit on. It is reminiscent of the traditional looms once used in the mills.



Thomas Crimp



My favourite aspects of design revolve around carpentry. Similarly, outside of design, my biggest passion is building - a job I began on my placement year. I work on a wide range of projects from bespoke furniture to mezzanine floors and pergolas. Overall, I spend most of my time making.

tomcrimp17@gmail.com
linkedin.com/in/tomcrimp

Up and Down Desk



The Up and Down desk is a height adjustable desk which helps users practice good posture whilst creating a diverse work environment, allowing them to be seated or standing when working.





Giorgia D'Agate



I am an adaptive designer who is aspiring to work within the commercial side of the furniture industry. I enjoy timeless design with an interest in exploring new processes which aid me to design unique pieces.

Giorgiadagate@gmail.com
@Giorgia.dagatedesign
linkedin.com/in/giorgia-d-adgate

ReVolVe

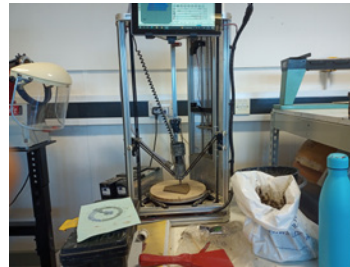


RevolVe is a collection of three spinning vessels that can be used as decorative or functional items within the home or office space, aiming to endorse positive emotion when interacting with it. These playful oak vessels have all been wood turned by hand, which bring values of traditional handcraft, along with timeless design.

Radii



Radii is an oak table that consists of a bespoke 3D ceramic tile centrepiece. All these tiles are 3D printed with clay, some with an extruded pattern. The patterns are made up of triangle ridges to show off the natural finish of the 3D clay printing. These bespoke tiles can be adjusted by using the existing CAD files and printed to what the customer desires. The clay can also be adjusted to the customers chosen colour and finish.



Guto Davies



My approach to design is grounded in the principles of simplicity and honesty, both in terms of appearance and functionality. By taking a hands-on and experimental approach, I am able to optimise the use of materials and manufacturing processes, resulting in designs that are both efficient and effective.

info@gutodaviesdesign.com
[@gutodavies_design](https://www.instagram.com/gutodavies_design)
[linkedin.com/in/guto-davies](https://www.linkedin.com/in/guto-davies)

Stream Table



Stream attempts to create a sustainable product from a traditionally unsustainable material: steel. One of steel production's most significant negative environmental impacts is the energy consumed. This project aimed to lower the energy used in all steps of the product life cycle, particularly the manufacturing phase.



1282



The 1282 chair blends traditional Welsh stick chair design with a contemporary vision, resulting in a fusion of past and present. Through meticulous research and homage to historical design elements, this chair exemplifies the value of drawing on cultural influences to inform modern design.



Eleanor De Boise



As designers, we have the responsibility to consider a product's environmental impact, as this is largely decided during the design stage. The products that I design focus on product longevity, keeping in mind emotional and physical durability.

eleanor.deboise7@gmail.com
@elle.dbdesign
linkedin.com/in/eleanordeboise

Planche

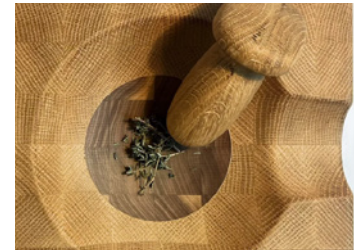


Planche enhances the experience of preparing whole spices at home. The product takes inspiration from the ergonomics of Palaeolithic tools, generating a primal interaction between the user and their ingredients. The design values longevity, which is achieved through the use of oak and black walnut end grain boards.

u-nIT



u-nIT is a modular shelving system that aims to reduce excessive furniture consumption. The product is designed with longevity at its heart and has the ability to evolve through modular adaptations. The unit is simple to disassemble and is constructed from standard aluminium extrusions, ash shelves and customisable sliding screens.



Will Doherty



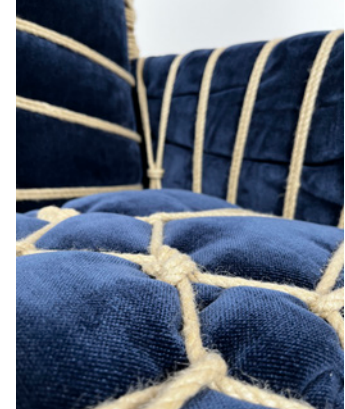
From an early age, I've always been fascinated with making designs and eager to learn how joints and moving parts were made. I've found that there is no set journey for every project and that each design process is tailored to the project. My favourite development method is model making, which gives more insight into material properties as well as ergonomics.

Williamdoherty11@hotmail.com
@Doherty_Designs

Gurando Shibari



The misunderstanding about what kink and BDSM are has created a stigma and taboo. The Gurando Shibari armchair incorporates features to show that kink can exist within our lives without being sexual or deviant; kink can hold unique and exotic forms to create beautiful, elegant shapes.



The Butler Stand



The Butler Stand is a portable coat stand, built for use in a hybrid office workstation. Everyone leaves their belongings on the floor or in the back of their chair, creating unnecessary clutter. The Butler is there to hold your belongings, retain the shape of your coat, and make you feel catered to and cared for. The Butler also has an office plant for decoration.



Zachary Duncan-Johal



I focus on honesty and purity in my designs which, I find, leads to wonderfully functional products that are intuitive to use. An important part of my design language is aiming towards timeless products, achieved through restraint, and extending the product life cycle.

zakdj.co.uk
[linkedin.com/zakdj](https://www.linkedin.com/company/zakdj)

Nacolo Chair



The projects guiding principles were natural, comfort and longevity, giving the chair its name. The design is flat-packed to reduce carbon emissions during transportation and bond the customer to the design; repairable by replacing parts; and easily refreshed by changing the loose cushion covers.



60° Light



The 60° light uses louvres to direct the light at multiple angles and provide soft indirect lighting within a residential or commercial setting. Aluminium construction keeps it lightweight and is important when considering the life cycle of the product because it allows for a closed loop system.



Freya Field



Working on a variety of projects over the course of my degree has allowed me to develop a wide skillset, making me a more adaptable designer. I enjoy designing to help aid social issues while still keeping playful design at the core of my values.

freya2610@icloud.com
freyafield.co.uk
@freyafielddesign
linkedin.com/freyafield

0121



0121 is a table collection, named after the Birmingham telephone area code, is inspired by the historical canal systems of Birmingham.

The use of steel alludes to the city's industrial heritage, the shape of the table tops represents the constantly changing water levels at the canal locks, whilst the rope gives a soft contrast to the harsher steel structure, much like it does on the canals.

Scribble and Read



This collection encourages children to engage more in reading by giving them ownership over their own reading space. The use of cardboard allows a child to decorate the chair to further their sense of ownership whilst being fully recyclable, cheap to buy and easy to assemble.



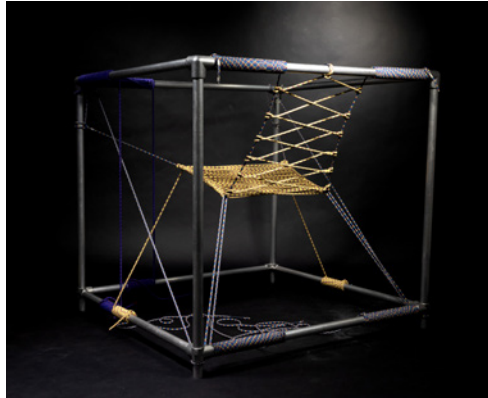
Abigail Foggo



As a designer, I strive for a balance between playful and functional design. My hands-on approach allows me to experiment with materials, textures, colours, and processes to make my vision a reality. I aim to design products that engage the user while still having a practical purpose.

foggo.abbie@gmail.com
@abbiefoggo_design
linkedin.com/in/abbie-foggo/

Taut



Taut is an educational piece, featuring a simplistic scaffolding frame with seating made entirely from used climbing rope. The design showcases how waste rope can be repurposed into functional items. Its intricate knotting provides opportunity to learn about knot tying skills and ways that old rope can be given a new lease of life.

Revolve



Revolve is a collaborative workspace piece, designed for the agile office. It is a spinning surface that allows employees to write directly onto the table. This final outcome helps the office to feel relaxed and add an element of fun into otherwise mundane office meetings.



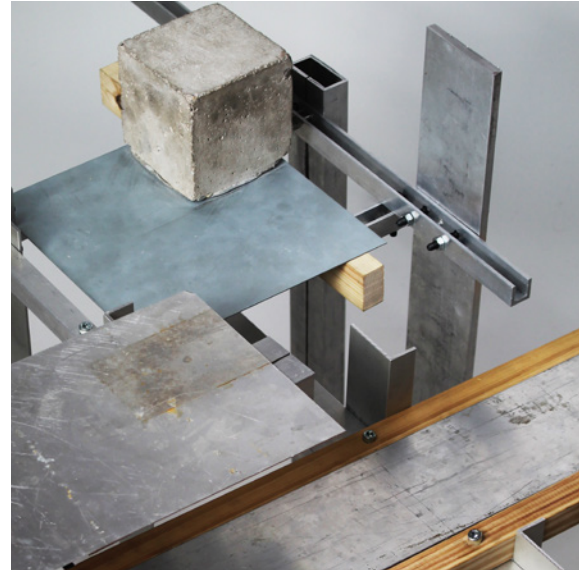
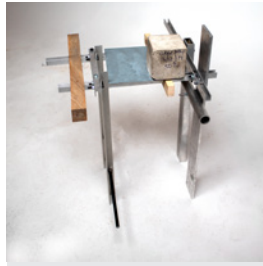
Adam Foley



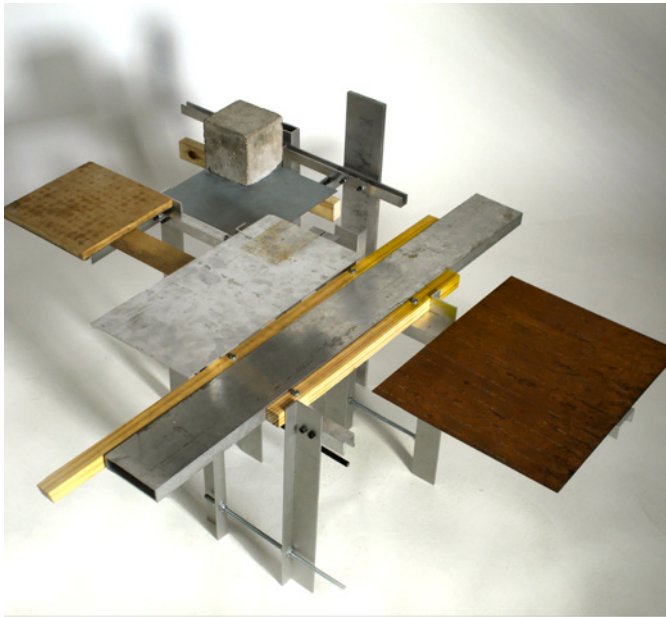
I am an instinctive designer who takes ideas from all aspects of my life, taking most inspiration from the world of art. I want to create pieces that make people react with happiness, confusion and anything in between, as I enjoy exploring the possibilities of what something can or can not be.

Adam.foley@sky.com
@ada__foley

Assemblage 003



The Wasting Table represents my love of architecture from the start of constructing a building to the demolition and everything in between. Using the waste materials from building sites as its surfaces, whilst exploring the ideas of Suprematist artist Kazimir Malevich that there should be a supremacy of pure artistic feeling.



Sukhvir Ghag



I think design should be bold, and I aim to push the boundaries. During the initial phase of my design process, I like to let my imagination run free and design without any limitations, as a strong initial idea is the core to a great design.

sukhvir_designs@outlook.com
[@sukhvir_designs](https://www.instagram.com/sukhvir_designs)
[linkedin.com/in/sukhvirghag](https://www.linkedin.com/in/sukhvirghag)

Spectrum



'Spectrum' is a dynamic statement console table, designed to sit proud in a grand entryway. Inspired by agamograph art, the piece surprises you and transforms into a different colour as you walk around it. Not only does the piece create a visual statement, but it also provides an experience.

Ray



Ray is a desk divider designed for hybrid offices. The reeded acrylic provides a window of privacy whilst ensuring the desk space feels open, still allowing employees to feel connected to one another. The divider can also light up with warm or cool lighting to simulate sitting by a window.



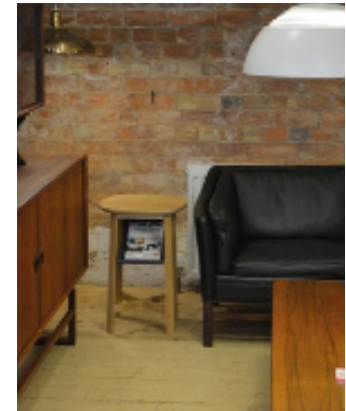
Daniel Goodhand



I am a designer-maker who values creativity and openness in every project I undertake. Sustainability is always at the forefront of my work, and I strive to create designs that reflect my commitment to making a better and more responsible world.

danielgoodhand15@gmail.com
@dangoodhanddesign
linkedin.com/DanGoodhand

The Reader's Side Table



The Reader's side table is a beautiful, functional piece of furniture designed to enhance the reading experience. With a sleek, minimalist design, it features a built-in book sling and a handy storage compartment for keeping mobile devices, and the distractions that come with them, at a distance.

Crafting Hope



The project aimed to produce plans for the Men in Shed program, a community initiative that addresses men’s mental health and loneliness. The plans will enable members to learn new woodworking skills and techniques while the final products will facilitate intergenerational connections for the members.



Claire Graham



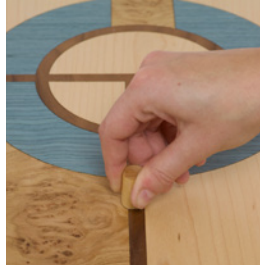
As a designer I find joy in creating unique pieces with my own hands, where I can bring my ideas to life and make something beautiful and functional. I like to experiment with new techniques and materials, but I have a particular interest in woodworking. I follow my ethos of all design should be inherently sustainable, creative, functional and aesthetic, bringing personality to whatever space the product belongs in.

cvgraham99@gmail.com

[@clairevgraham_designs](https://www.instagram.com/clairevgraham_designs)

[linkedin.com/in/clairegraham](https://www.linkedin.com/in/clairegraham)

The Maze



The Maze cabinet is designed to store board games, inspired by Japanese puzzle boxes. It features a unique opening system that requires a series of steps to open the cabinet, making it a game in itself that the user must solve to open. It's aim is to combine storage and entertainment in a fun and creative way.

Memento Stones



Cairns have been used throughout history as a burial technique. The stacking of the stones symbolises a memorial for a passed loved one. Memento Stones is inspired by recreating this ancient tradition into a contemporary sculpture for you to commemorate the person that you have lost.



Molly Harkin



Driven by innovation and the pursuit of utilising pioneering materials, my values as a designer advocate being ethical and stylish. My products are constructed with contrasting materials, textures and colours, to create visually stimulating outcomes. Within my designs, delivering function, quality and sustainability without compromising aesthetics is key.

molly_harkin@hotmail.com
mollyharkindesign.co.uk
@mollyharkindesign

Kano



Kano is a collection of variously-sized timber storage jars, designed to help manage clutter within the home. These provide a hidden space for items that build up on surfaces such as pens, chargers, keys and sentimental trinkets.

Occy



The Occy stools centre on cruelty free innovation. They are made from MIRUM® - a plant based, plastic free, vegan alternative to animal leather. This is positioned within a valchromat or plywood frame, made in collaboration with the design and fabrication company: formd. All materials can be separated after use, enhancing sustainability without compromising quality, function or aesthetics.



Sarah Henderson



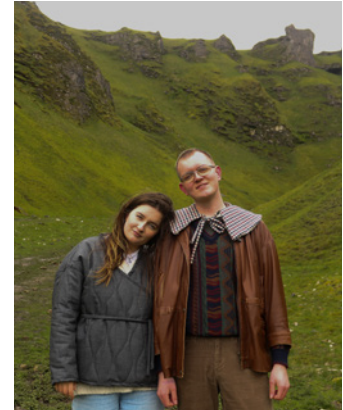
I'm a product designer who is passionate about creating designs that not only look great, but also tell a story and empathise with our emotional needs. I believe that design can be a powerful tool for connecting people, creating meaningful experiences and building a better, more sensitive future.

s.j.henderson.design@gmail.com
@s.j.h.design
[linkedin.com/s-j-henderson](https://www.linkedin.com/s-j-henderson)

Feels like Home



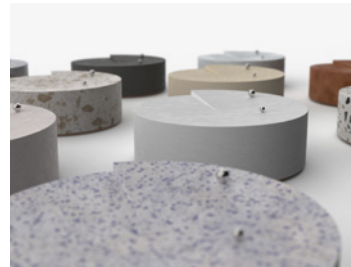
'Feels like Home' is a project that explores the nostalgic feeling of comfort through weight, warmth and textiles. The range of clothing and wraps aims to protect us from outside anxieties and sensory issues by reminding us of the comforting feeling of home.



Senza Tempo



Senza Tempo is a coffee table timepiece that uses magnetic ball bearings to measure moments. Made of jesmonite, timber and stainless steel; this is design made to last.



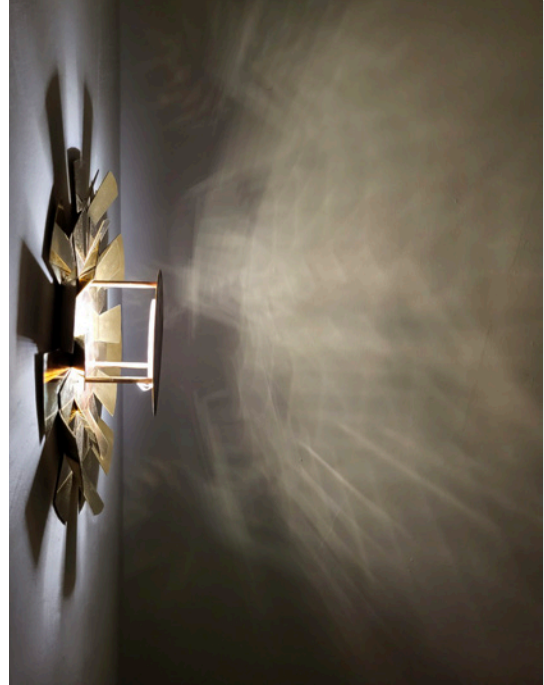
Merry Kirkwood



As a sculptural furniture designer I strive to bring my love of art into my designs, while creating functional pieces. Whilst primarily working with metals, I'm always looking to expand my practical techniques to create new and innovative pieces, and develop as both an artist and a designer.

bmerry.design@gmail.com
@ designedby.merry

Corona



Corona is a brass wall light inspired by solar eclipses. When turned on, the brass will reflect light across the wall and around the room much like the sun during an eclipse.



Reliquary



Reliquary is a jewellery box designed to make us consider the relationship between ourselves and our jewellery. The piece comes in 2 parts with the box acting as a chest to keep your treasures in, and the necklace that is used as a key to open it.



Chhaya Lad



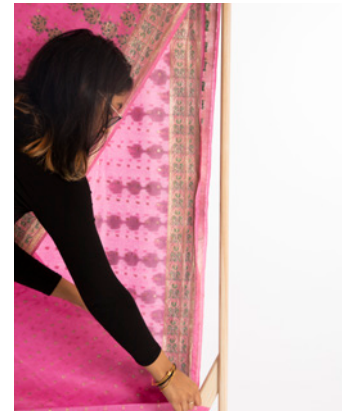
As a designer-maker I prefer my designs to be functional over being extravagant. If my designs can reach the many over the few than I have done my job.

chhayalad16@gmail.com
@clad.designs
linkedin.com/ chhaya-lad

Sundara



Sundara acts as a vehicle that you can use to showcase your most sentimental sarees that you are no longer able to wear. This allows you to reminisce over now-redundant, beautiful sarees, and have them on display.





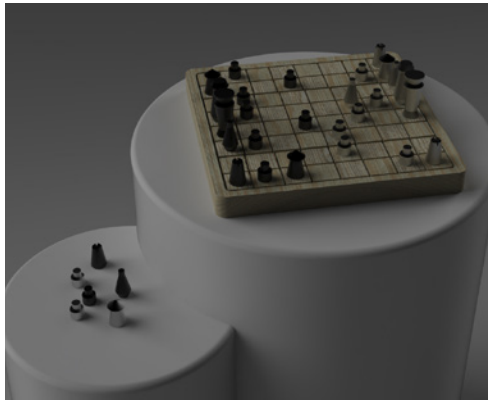
Fraser Moorcroft



I'm motivated by transparent and environmentally-considerate design, with a strong belief that design can make a positive impact on the world. I am a passionate, committed designer with an eye for details. I look forward to further enhancing my skills through a design career.

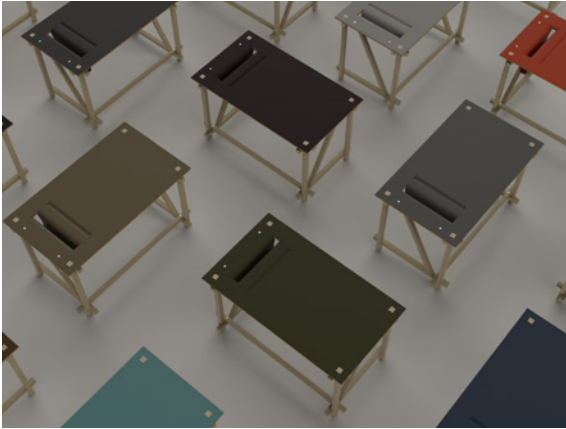
fraser.moorcroft14@gmail.com
@fr_m_design
linkedin.com/in/fraser-moorcroft/

TOPO Chess Set

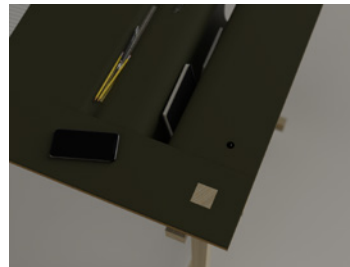


The TOPO Chess Set is a sleek and modern take on the classic game, with minimalist pieces that emphasize hierarchy and symbolism. The set features a board and pieces made from high-quality materials, with simple yet elegant design elements that will appeal to players and collectors alike.

Workhorse



Inspired by its namesake, the workhorse desk takes inspiration from the ubiquitous nature of the overlooked and hopes to exhibit instead of hide the contents. With a simple frame construction, the focus is on the linoleum table top and corresponding slings, as well as the personalisation available to the consumer.



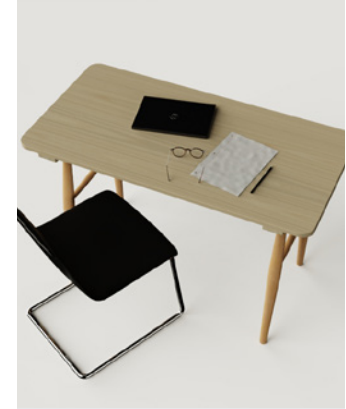
Ed Mountfort



As a designer, I am thorough, open-minded, and adaptable. I am obsessed with the finest of details as, ultimately, that's where perfection lies. I take pride in producing the highest quality results and am always striving to hone my skills in all aspects of the design and making processes.

edwardmountfort@gmail.com
[@ed_mountfort_design](https://www.instagram.com/@ed_mountfort_design)
[linkedin.com/in/edwardmountfort](https://www.linkedin.com/in/edwardmountfort)

Chiltern Desk



The Chiltern Desk is perfect for the home office workspace, inspired by the processes and materials used in the creation of the Windsor Chair and the bodging movement of the Chiltern Woodlands. A solid beech subframe as well as a solid ash tabletop provide a durable workstation full of charm.

Stilis Shelving Unit



Stilis is a wall-mounted plywood display shelving unit, inspired by the De Stijl movement and featuring geometric shapes and solid panels. The shelves are arranged in an almost grid-like pattern with intersecting lines, creating a dynamic visual impact. The unit is functional yet stylish, perfect for displaying pieces such as heirloom items.



Ethan Newsome



From an early age design has always been an interest of mine. Studying furniture and product design has allowed me to develop my skills and further my knowledge. Final year has stimulated my interest in CAD modelling and product visualisation, which I hope to pursue in the future.

ethannewsome@yahoo.co.uk
@ethan.newsome.design
linkedin.com/in/ethan-newsome

Ash Salt and Pepper Grinders



This stylish set of ash salt and pepper grinders features a sleek design that is both functional and visually appealing. Made from high-quality timber, the grinders have an adjustable ceramic grinding mechanism that can easily be adjusted to achieve the perfect grind for your seasoning needs.

Triple



Perceived value is subjective to each person. Triple is an ash coffee table which allows the user to place items of value onto the lower shelf, with glass top acts as a window to these objects for all to see.



Erin Parker



As a visionary furniture and product designer, I believe that design should be honest and made for a purpose. I have adapted a user-sensitive approach, balancing form and function, and develop my design work through sketches, models and CAD renders.

erinparkerdesigns@outlook.com
erinparker.co.uk
@erinparkerdesign
linkedin.com/in/erinparkerdesign

Connect



Connect takes the function of the humble yet redundant old telephone seat and adapts it for modern day mobiles. With an ash frame and bouclé upholstery, Connect is a place to sit and lean for quick mobile phone calls in the hallway of a domestic environment, away from others.



Vine



Vine is a freestanding wine table, designed to be situated between two people sat on sofas or armchairs. The bright blue Formica and raw plywood edge finished with beeswax add a modern twist. Vine is easy to assemble, made from only six components (three legs and three shelves), with joints that are all dry and require no further fixtures.



Will Revill



I design using logic and gut feelings, growing my design organically from start to finish. I'm a strong believer that function is form, this is why I'd much rather spend my time in nature than the city. I believe you should make a product to last a life time.

Williamrevill@btinternet.com
[linkedin.com/in/WillRevill/](https://www.linkedin.com/in/WillRevill/)

Gwennol



Gwennol is a lamp with a re-weavable shade that aims to facilitate inter-generational conversations through weaving.

One Years Waste



One Year's Waste is a rolling stool that weighs 98.66kg - equal to one person's annual plastic waste within the UK. This shows the extent of waste produced per person within the UK, with some people producing well over 100KG of plastic waste per year.



Liam Reynolds



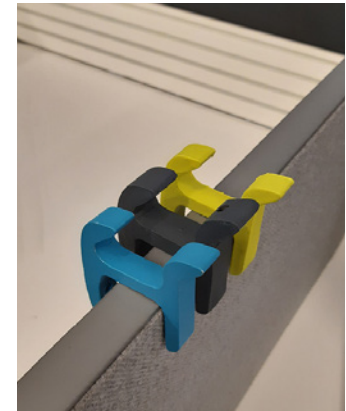
I'm most motivated to engage in the design process when there is a problem with an attainable solution. I enjoy when I'm actively hands-on throughout the entire design journey.

liam.reynolds627@gmail.com

Haken



Haken is a portable hook, specifically designed to offer users a storage solution for their bags, eliminating the need to leave them on the floor. This innovative hook has been created with its own unique form, allowing it to be easily attached to tables, making it a highly efficient and effortless product to use.



Flu-Ency



Flu-ency is a collection of products that is designed to help parents of children who stammer to gain a better understanding of the feeling and the emotions that may come with it. Flu-ency aims to show how a stammer can feel as well as inducing emotions such as frustration and anxiety.



Mim Sharrocks



I consider myself an artistic designer; I love to incorporate elements of outlandishness in my designs. Many of my pieces are motivated by joy. I believe our jobs as designers is to bring joy to people with every object, whether that be through great functionality or appearance.

mimdesignsstuff@email.com
@mimdesignsstuff
linkedin.com/in/mimsharrocks

Theodore



Designed with simplicity in mind, the Theodore Pendant Light uses darker toned wood to create an atmospheric light. This is ideal for customers who want to buy something off the shelf and install it quickly and easily.

Barnaby



The Barnaby stool is a piece created from the idea of joy. The multi-functional stool is both for seating and lighting, and a trigger for spontaneous happiness. It's designed to light up from beneath when the user sits down, creating an element of surprise that hopefully inspires joy.



Lillie Smith-Lake



As a designer I specialise in creating sleek, stylish, and simple products that catch the eye. My designs exude a sense of elegance and sophistication, making them perfect for those who appreciate modern and minimalist aesthetics. From everyday items to statement pieces, I have a keen eye for detail and a passion for creating beautiful, functional products.

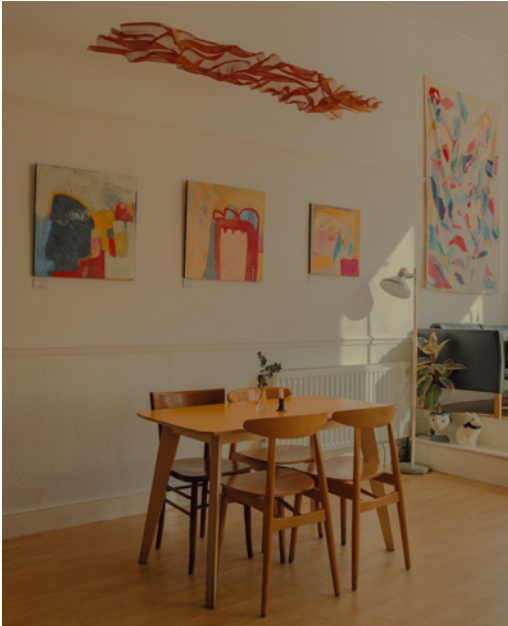
lilliesmithlake@gmail.com
<https://issuu.com/lilliesmithlake>
[@lillieswork](#)

SoOt.

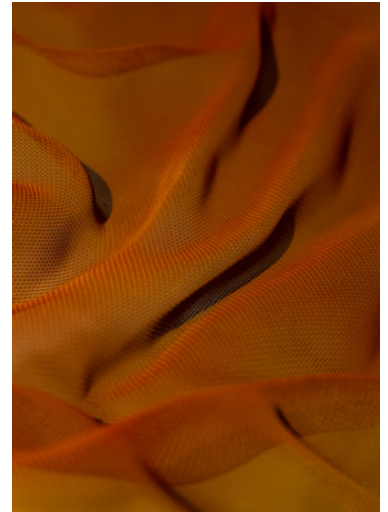


SoOt is a set of handmade bread and butter dishes, designed to elevate the dining experience at home. Made using traditional hand-turning techniques and finished with the ancient Japanese burning method of Shou Sugi Ban, the dishes are durable, beautiful, and add a touch of sophistication to any dining setting.

Ripple



Ripple is an elegant hand-crafted interior piece, sculpted in stainless steel mesh. With a combination of colour and light, it creates an inviting atmosphere while also absorbing sound waves for better acoustics. Perfect for above a dining table, it reduces echoes and improves conversation quality for a more enjoyable dining experience. Additionally, it can be scaled to accommodate alternate environments.



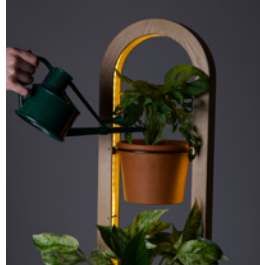
Joel Stern



I am a driven, contemporary designer, passionate about enhancing people's quality of life through design. My design philosophy centers around identifying and solving real-world problems, where I draw inspiration from the unique needs of individuals. I aspire to become a bespoke luxury kitchen designer, crafting designs that fuse elegance with functionality.

Joel.stern@hotmail.co.uk
@designedbyjoel
linkedin.com/in/joel--stern/

Eve



Eve Light is a contemporary grow light with a modular plant pot that promotes the users' mental health and well-being by incorporating nature into any indoor space, regardless of the amount of natural light available. Its modern and sleek design creates a positive and relaxed ambience in any room it is placed in.

PDS - Portable Desk Space



The Portable Desk Space is an innovative and luxurious laptop accessory for the hybrid office user who is constantly on the go. It effectively combats the feeling of displacement by allowing users to transform any space into a comfortable workspace, comprising of a multifunctional laptop case, mouse pad/writing table, laptop stand, and phone stand made from sustainable, grippy leather.



Reeve Stevens



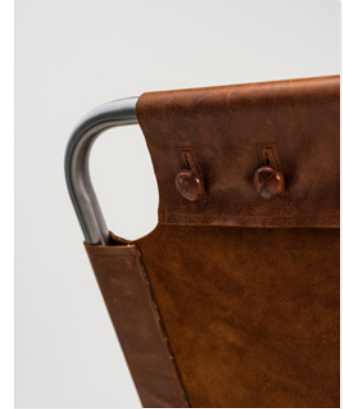
I'm a designer who is dedicated to making high-quality, fun products that are accessible to everyone. I approach my work with a process-led mindset, allowing the material to guide my designs. My focus on quality and enjoyment ensures that my creations resonate with the masses. With a sharp eye for detail and a true passion for my craft, I aim to bring joy to people through my designs.

reeve.stevens555@gmail.com
[@reevework](#)
[linkedin.com/in/Reeve-Stevens](https://www.linkedin.com/in/Reeve-Stevens)

P7 Chair



The P7 Chair is a sleek and modern flat-pack chair, made entirely from tubular steel. The tubes are joined together using innovative crush joints, eliminating the need for any harmful welds. The design also features a luxurious leather hammock seat, providing comfort and elegance.



P12 Lamp



The P12 Lamp is a twelve-part, 3D printed, motion activated lamp. The P12 Lamp is made from sustainable and biodegradable wooden printing filament, and is intended to be a playful and engaging alternative to traditional lighting.



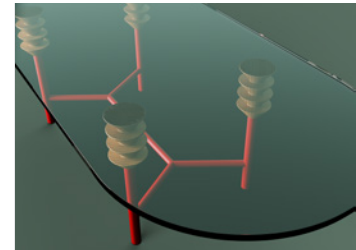
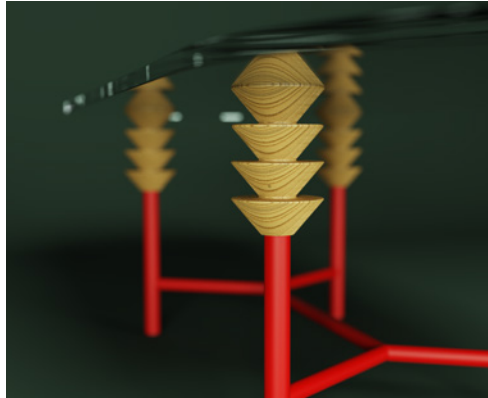
Lucy Steward



Inclusive design fundamentally drives me as a designer. Throughout my university experience, I have always aimed to approach projects from an inclusive point of view. I also have a passion for traditional design and love learning and using centuries-old technics to create modern and aesthetic pieces of furniture.

lucy.steward1@icloud.com
@lucysteward_design
linkedin.com/in/lucystewarddesign

Turned



Inspired by circular design concepts, the Turned Table aims to empower the user by providing a variety of adjustable elements that make it suitable for use anywhere in the home.

Occlude



Occlude is a mobile acoustic shield that works to reduce the level of background noise and visual distractions within office spaces. It's built to fit perfectly around any office chair allowing the user to concentrate without leaving the comfort of their desk.



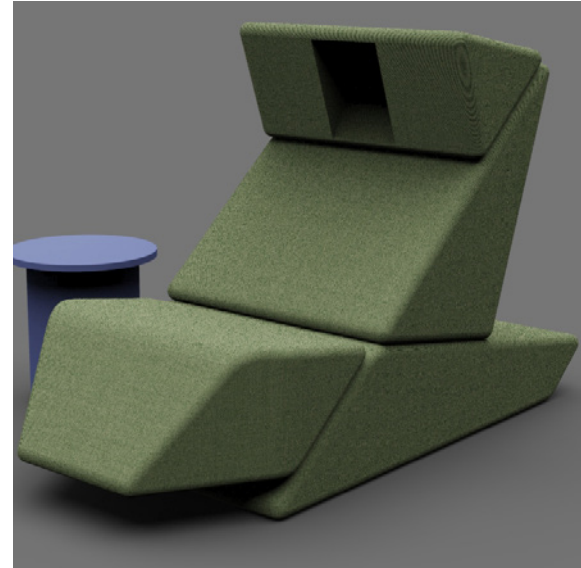
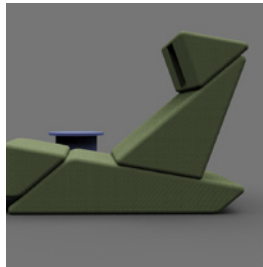
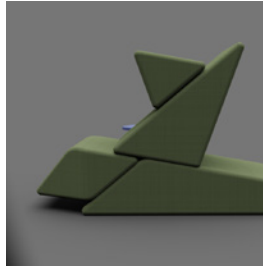
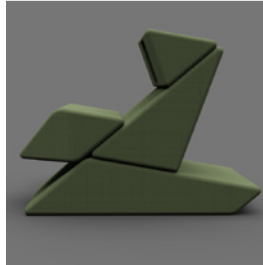
Kieran Thomas



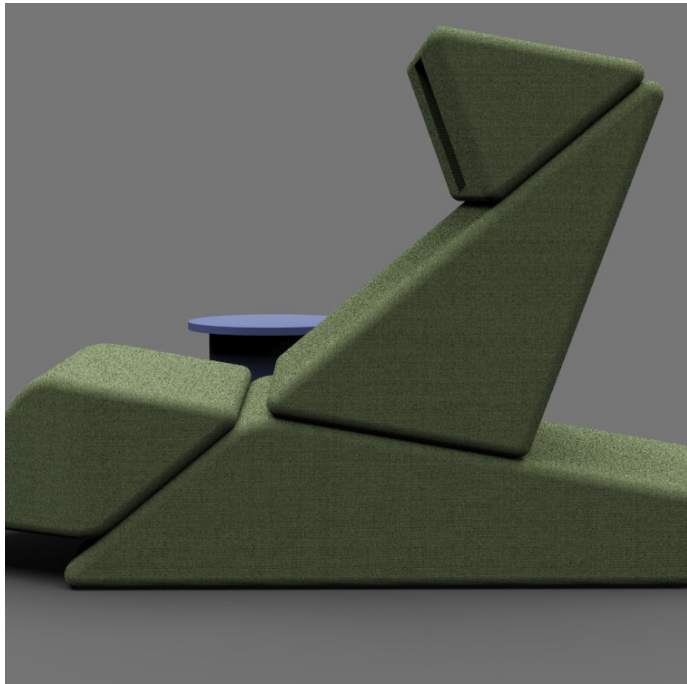
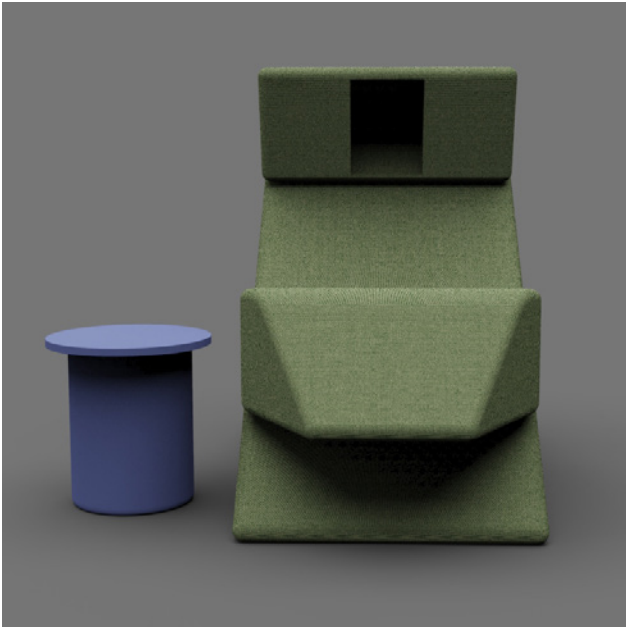
I'm driven to make positive steps towards improving peoples' quality of life, and hope to achieve this in my future property development endeavours. I enjoy difficult projects that challenge my abilities to make me a better designer.

kieranthomasdesign@gmail.com
@kieranthomasdesign

The Zensory Chair



Relieving discomfort! This chair aims to reduce the sensory overload that people with Autism and ADHD might encounter in their day-to-day lives. However, stressful and overwhelming situations are not limited solely to these individuals and therefore, this chair can help anybody experiencing overstimulation or feeling overwhelmed.



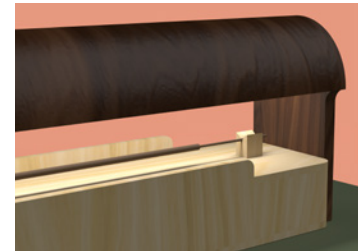
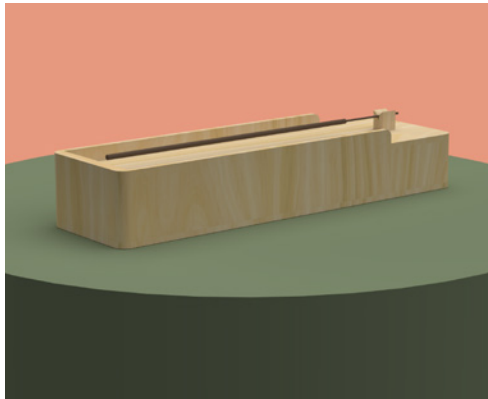
Izzy Tucker



I consider myself as a designer-maker, with a particular interest in designing products that will create solutions to everyday problems. I especially enjoy working with timber, as well as experimenting with new materials and techniques. Alongside this, I also have a keen interest in product marketing and branding.

isabelle@highgreenfarm.co.uk
@isabelletuckerdesign
<https://linkedin.com/in/isabelle-tucker>

The Monterrey Incense Lamp



The Monterrey Incense Lamp combines an incense holder, storage, and light, all while representing and continuing the legacy of the prestigious designer. The product provides a form of ambient lighting, whilst filling the home with a pleasant aroma, creating a relaxing home environment.

The AI Frestation



The AI Frestation is a portable outdoor kitchen unit. It is designed to make al fresco dining a more sociable activity by making the process of food preparation easier, whilst encouraging users to spend time surrounded in nature with other people.



Ben Walker



I've enjoyed working on ideas without a clear destination in sight, as I love the process of experimentation and discovery as the project unfolds. Working to a brief can sometimes limit this approach, but it's an exciting challenge to explore the many alternative routes to delivering a product.

benwalker8@btinternet.com
@benwalkerdesign
linkedin.com/benwalker8

The Sharing Boards



Sharing Boards are a trio of ash serving boards, designed to encourage interaction around the dining table. Their design lends themselves to be handled and manoeuvred around a table of any size, due to their stacking ability.

Are You Sitting Comfortably?



'Are you sitting comfortably?' is a project that explores the relationship between the user, the chair, and the upholstery. It's a conceptual project that takes the traditional approach of the upholstery being attached to the chair and redesigns it to instead be worn by the user.



Michael Wallace



I was born in Newcastle upon Tyne, where the urban city environment has inspired my life and style. I hold great value in designing for the people, with functionality and elegant solutions, combined with a passion in urban art that pushes me to explore colour, technique, and application.

michaeljwallacedesigns@gmail.com
@michael_wallace_designs
linkedin.com/in/MJWDesigns

1520 Sedgwick Bench



1520 Sedgwick bench is designed with street cultures in mind. Inspired by graffiti, skateboarding and hip-hop culture, this bench features bold colours, making it a unique and vibrant addition to any urban landscape. It offers a comfortable place to sit and admire the surrounding cityscape, while also reflecting the energy and creativity of the streets.

Feld



Feld is a product intended for use in office breakroom spaces. Feld encourages employee communication and productivity, providing a solution to the ever-changing office spaces we find ourselves in. Feld also breaks through barriers and fosters new friendships.



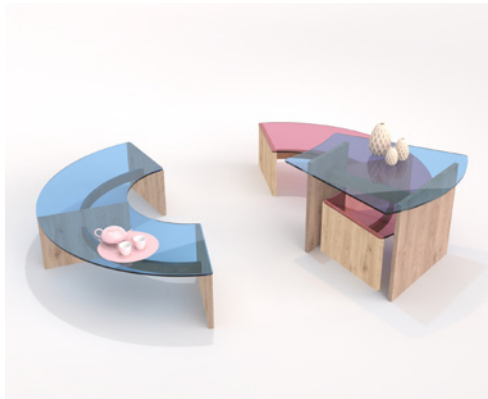
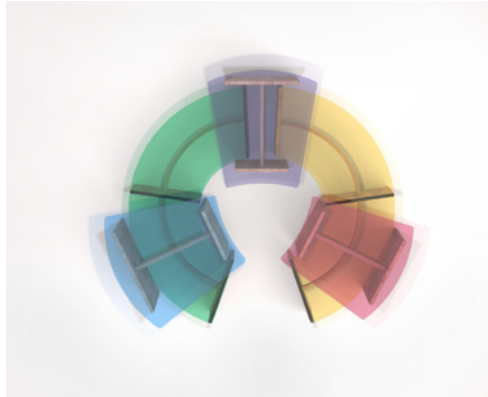
Gemma Warden



I stay very close to my personal value of purposeful design, which heavily influences my final products. My main inspiration is colour and highlighting its beauty through different interactions. I aim to create designs that seek to highlight the small details in simple but elegant solutions.

gcwarden8128@gmail.com
@gemmawarden_design
linkedin.com/in/GWardenDesign

Chroma



Chroma is an exploration of colour conducted through a set of coloured glass tables. The intermingling refractions create new combinations that are viewed from the top down. Inspired by the overlapping colours in the colour wheel, Chroma allows the user to create their own.

Glow



Glow is a modular, portable indoor lighting system. The main purpose of Glow is to create a comfortable environment anywhere in the house. The light is designed to be used both together and individually.



Tobias Williams



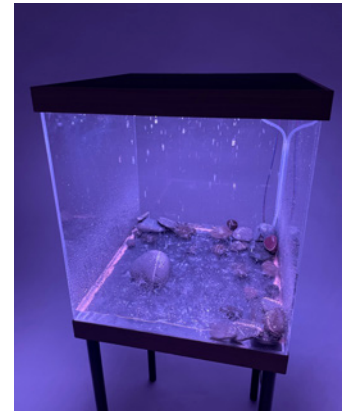
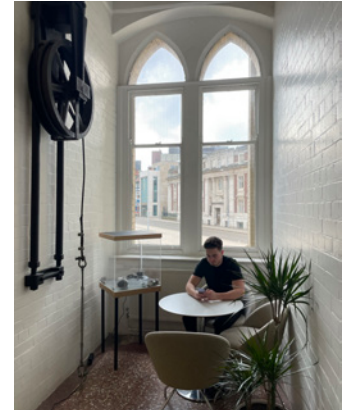
My interest in design encompasses everything in the built environment. I take inspiration from everything around me, from architectural projects to tech design and everything in between.

tobiaswilliams.26.7@gmail.com

Rain Cube



Rain Cube is an exploratory project into ambient lighting and nature emulation. Interactive lighting responds to auditory stimuli with rainfall and organic forms, creating an attention grabbing product that elicits an emotional response.



MyDesk



MyDesk is a portable, multifunctional desk mat with wireless charging capabilities, providing an opportunity to choose from a range of layout iterations through its unique dual-layer design. Make any workspace a familiar one with MyDesk.



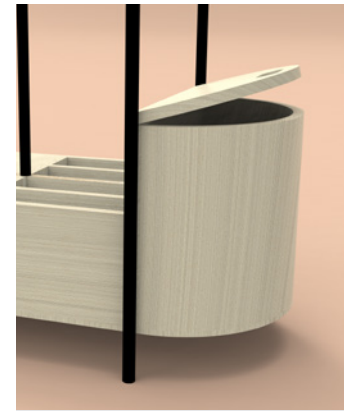
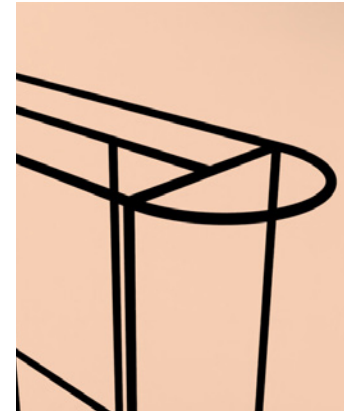
Emma Woodhead



I am a practical designer with an ambition to design for a better world. Design has always been a passion and having a chance to study furniture and product design has allowed me to push myself to become a better designer.

emmawoodhead1@gmail.com
[@emmawoodheaddesign](https://www.instagram.com/emmawoodheaddesign)
[linkedin.com/emmawoodhead/](https://www.linkedin.com/emmawoodhead/)

Capsule



Capsule is designed to tackle overconsumption of fast fashion. By having an open space in which the user's clothes are stored, they can see what they have and reduce the need to buy more.

The Nonna Collection



The Nonna Collection consists of three, stackable, 3D printed vases. Nonna allows the user to change the height of their vase, depending on flowers they are wanting to display. The collection embodies the shape of a thimble and can be configured in multiple different ways.



Janis Zube



I love to create questionable, abstract and fun designs, stimulating thought and discussion through design and taking risks with unknown territories. I enjoy applying CAD to show off products and want to pursue eccentric projects in the future to push my limits.

janis.zube@gmail.com
@janisz.design
linkedin.com/in/janiszube

One



One is a piece of furniture made using a single sheet of metal, which is bent or folded without separation. As a user sits, the bounce of the seat provokes an feeling of uncertainty. It is a statement piece for an eccentric and questionable space.



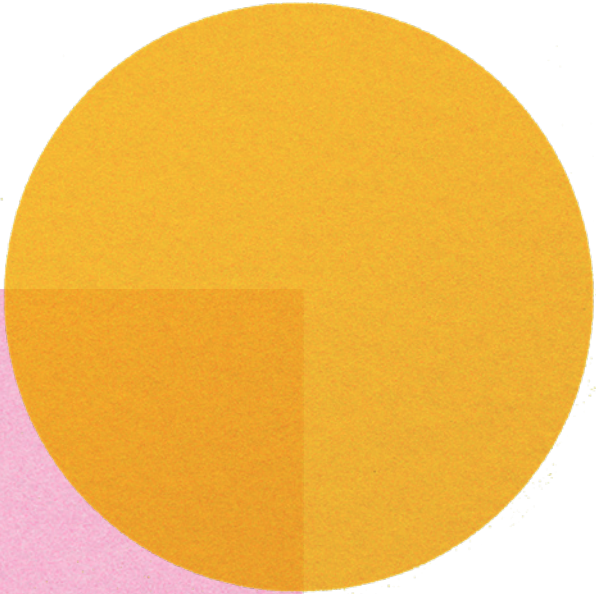
Zields

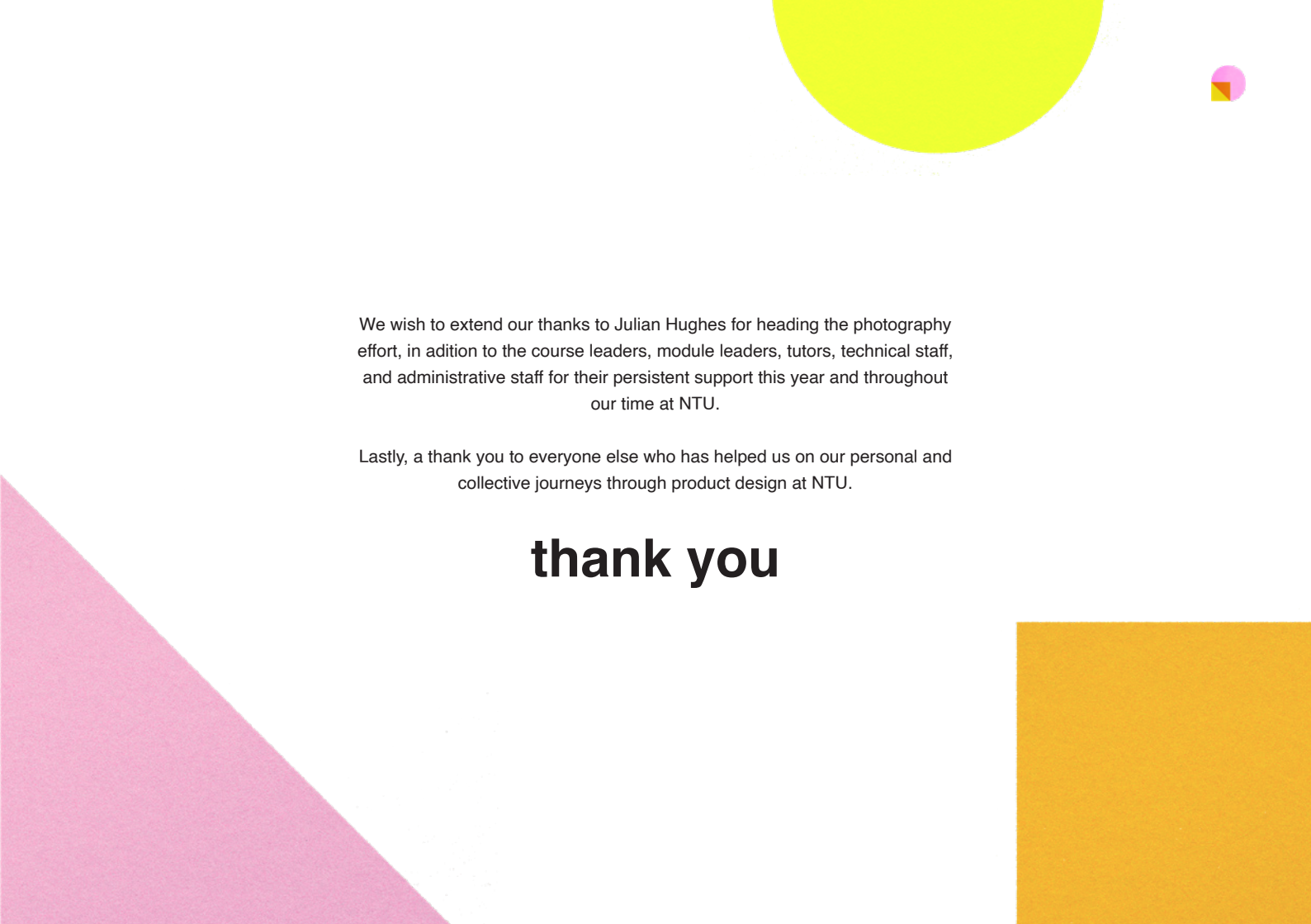


Zields is an adjustable vase that utilises a thread mechanism. This allows flowers of any height and shape to be presented beautifully.









We wish to extend our thanks to Julian Hughes for heading the photography effort, in addition to the course leaders, module leaders, tutors, technical staff, and administrative staff for their persistent support this year and throughout our time at NTU.

Lastly, a thank you to everyone else who has helped us on our personal and collective journeys through product design at NTU.

thank you

academic staff

Grant Baker
Dan Bartram
Charlotte Bradford
Elliot Bradley
David Bramley
Emily Brook
Ellen Burke
Simon Cahil
Ian Campbell Cole
Allan Cutts
James Dale
Fiona Davidson
Dr. Harriet Edwards

Dr. Rebbecca Gamble
Chris Hanley
Suzannah Hayes
Alex Hellum
Julian Hughes
Tom Hurford
Paul Kennea
Chris Lamerton
Emma Lane
Richard Malcolm
Hanna Manley
Liam Martin
Theresea McMorro

Craig Mutch
Kathryn Pashley
Dr. Phillipa Martin
Daisy Pope
Max Pownall
George Riding
Rob Scarlett
Dr. Luke Siena
Nikki Sizer
Dr. Joseph Stewart
William Warren
Karen Winfield
Josh Woolley



technical staff

Susan Allcock
Insa Ba
Mark Beeston
Lee Bollard
Steve Chamberlain
Alan Chambers
James Cooper

Charlie Dennis
Dave Edwards
Chris Forbes
Matt Garlick
John Grimes
Ben Hutton
Graham Knighton
Steve Marriott

Dave Nix
Emily Quinn
Jenny Savage
Carl Smith
Kerry Truman
Anna Tubey
William Zindoga

ntudi committee

branding and print



Sarah
Henderson



George Hill



Libby Manning



Sophie Puffett

photography



Eden Russell



Reeve Stevens



Sejal Vachher



Joey Wong

website



Thomas Bee



Molly Harkin

social media



Daisy
Balasingam



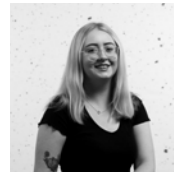
Sukhvir Ghag



Molly Gurr



Manaz Nariman



Erin Parker

film and animation



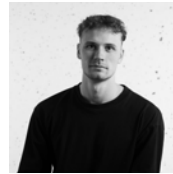
Joe Barfield



Hannah Cox



Abbie Foggo



Luke Hedley

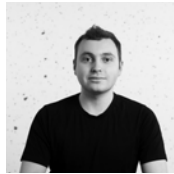


Francis
McDonald

exhibition



Guto Davies



Josh Dennis



Robert Evans



Alex Harwood



Anya Pivcuka



Aaron
Robinson



Maitri Shah



Isabel Ward



ntudesignindustries.com
@ntudi



BA (Hons) Furniture & Product Design