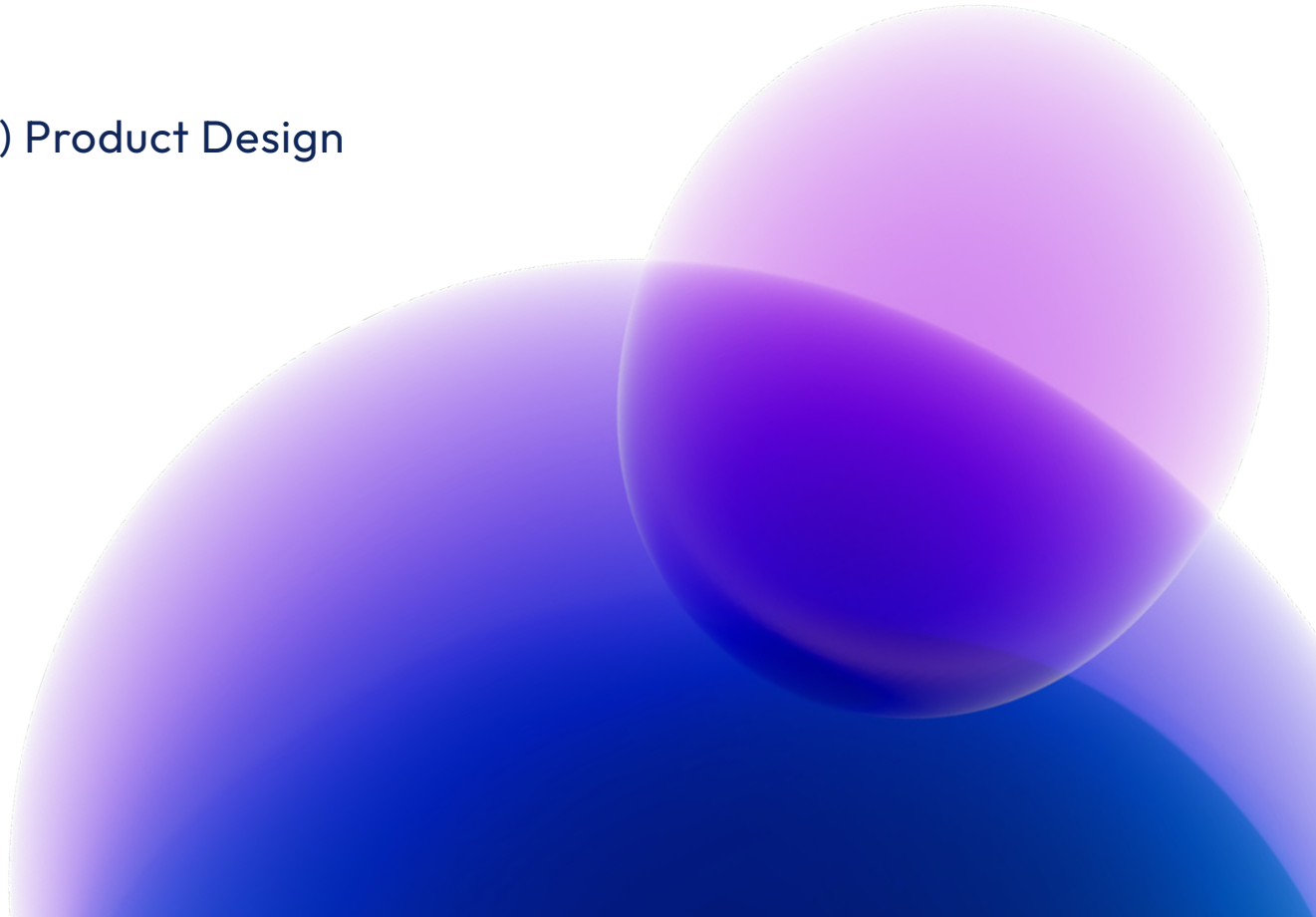


NTU
Design Industries
2022

BA (Hons) Product Design



We are designers, makers, creators, and innovators. Our origins are distinct, our paths destined to diverge, yet we are each unified by our studies at Nottingham Trent University.

We work collaboratively to support our individual and collective goals. Made stronger by our differences, we develop together in an encouraging and enthusiastic environment.



We embrace the change our modern world demands, pioneering new ways of work to face these challenges head-on. We are a constant voice of sustainability; culturally, socially, and environmentally, this is paramount in our practice.

The community we have created is one of resilience and optimism. Despite great uncertainty, we stand stronger as a collective, to define a new chapter in our discipline.

We are NTU Design Industries 2022.



James Dale

Head of Product Design

A handwritten signature in dark ink, appearing to read 'James Dale', written in a cursive style.

The start of this academic year coincided with an important anniversary, the publication 50 years ago of Victor Papanek's seminal 'Design for the Real World'. Papanek was a firebrand in advocating responsible design, not just in terms of sustainable and environmental consciousness, but in design that set out to aid all society, design that was truly inclusive, democratic and that put real people at the heart of design decision making. 50 years on I wonder what Papanek would make of his own legacy? It seems to me, that his work and vision is even more vital than before, much has already been achieved, but there is still so much more to do. Papanek himself was a refugee from the fascism that engulfed Europe in the middle of the 20th Century, his experiences inspired his politics and drive to ensure that design should be a power for good, that would propel us towards 'a practical vision of a new age of morally responsible design'. In these difficult times, with so many challenges facing us, we should spare a thought for what Papanek set out to achieve and ensure that it doesn't take another 50 years before his vision of social and environmental change comes to pass.

I know that many of this year's graduates share Papanek's vision and ambition, they are extremely conscious of the world for which they design and want to see that as a better, safer place where we live in balance with nature and our neighbours. My advice to you all is not to stop dreaming of that future, but to embrace the ambition and get to work.

PRODUCT DESIGN BA (HONS)

Our BA (Hons) Product Design course at Nottingham Trent University concentrates on the design of innovative products, systems and services including consumer goods, electronic gadgets, sustainable products, sports and healthcare equipment, packaging and transportation.



Grant Baker

Course Leader, Product Design BA (Hons)

A handwritten signature in black ink, appearing to read 'G. Baker'.

Here you are at the end of your studies at Nottingham Trent University and what an interesting time you have had.

Your journey at NTU has been truly unique and not without some incredible challenges. As you now start planning for your future, I encourage you to reflect on these experiences making sure to congratulate yourselves on how far you have come and the resilience you have shown.

As part of your university experience, you have had some fantastic opportunities from live briefs with inspirational industry partners to taught sessions developing skillsets that will no doubt pay dividends in your future careers. However, in this stage of reflection the opportunity I think you should celebrate the most is the privilege you have had to meet your peers, a fantastic group of young creatives who have been there to offer thoughts, encouragement and friendship throughout your studies.

As you now begin the next stage of your journey, I hope that your collaborative spirit continues to support each other's successes for years to come.

To the student cohort of 2022 it has been an absolute pleasure to be part of your time here at NTU and I wish you the very best in your future – please keep in touch.

“Whatever you do, the only secret is to believe in it and satisfy yourself. Don't do it for anyone else” – Keith Haring



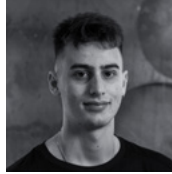
Class of 2022 — Product Design BA (Hons)



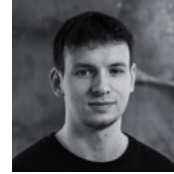
Loyal Al
Qabandi



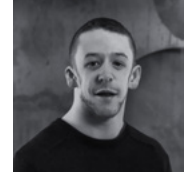
Finn Anderson



Dimitrios
Apostolakopoulos



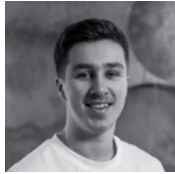
Will Ashton



Max Baldam



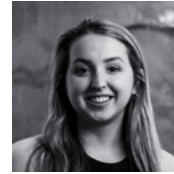
Cerys Benskin



Luke Billingham



Ben Carr



Channele Chipps



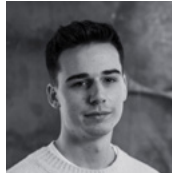
Caitlyn Clark



Jacob Cran



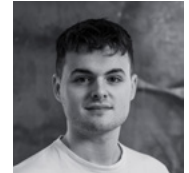
Jamie Cullen



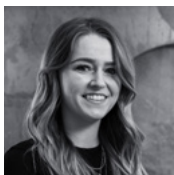
Ellis Cutler



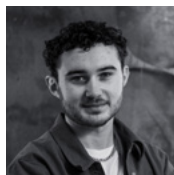
Tomi Daniels



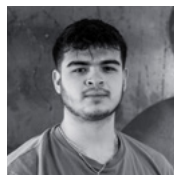
George Ebeling



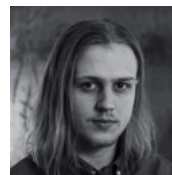
Ellen Fox



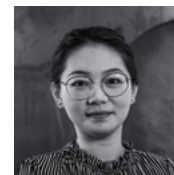
Fredrick James
Owen



LJ Green



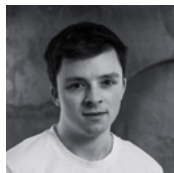
Thomas Green



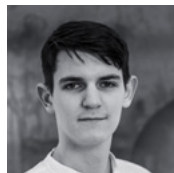
Huiqin He



Suet Sum Ho



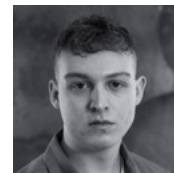
Joseph Hordern



Jacob Siggery



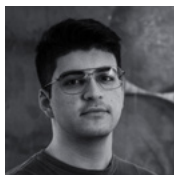
Maja Kaszuba



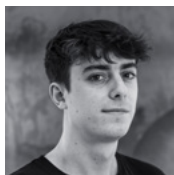
Oscar Kay



Ethan Kendle



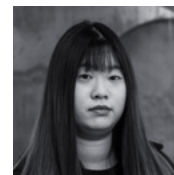
Atef Khasawneh



Charles Lanni



Luke Harrison



Xinyu Nao

Class of 2022 — Product Design BA (Hons)



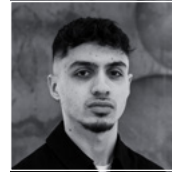
Callum McCann



Madhav Mistry



Alex Morris



Nisar Nagia



Najib Islam



Josh Pinard



Priya Modhvadia



Sahal
Sayedmiam



Elizabeth
Stewart



Abdul Sulaiman



Nobuyuki Suzuki



Jessica Taylor



Tom Lacey



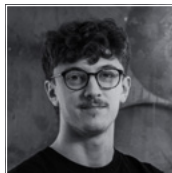
Felicity Van Der
Straaten



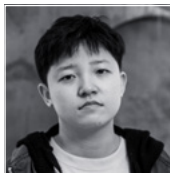
Anna Ward



Ollie Watkins



Adam
Wolstenholme



Miao Zhahg



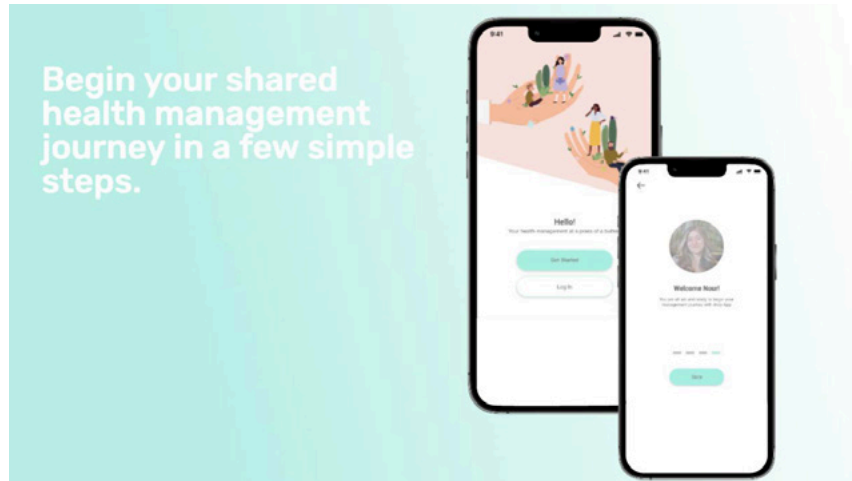
Layal Al Qabandi

Hello! I am a third year BA Product Design student. At a young age I have had an interest in design creativity. Being a curious person, this course enabled me to explore a different aspect of design and my favourite part is bringing it to life!



07943112732

layaljalqabandi@gmail.com



DROP

Investigating how design can support interaction between people living with diabetes and their primary caregiver/support person to enhance self-management strategies.

Learning to monitor and control blood sugar levels takes time, and the potential of serious health problems never goes away. Given that diabetes is a long-term illness that affects the way the human body converts food into energy, controlling it is done through various methods such as monitoring and managing strategies.





Finn Anderson

Having worked on a range of projects in product, furniture and graphic design, I have grown to be a versatile designer with a broad skillset. I find great fulfilment in creating functional, meaningful outcomes that enhance the life of the user.

@fnndrsn_design
linkedin.com/in/FinnAnderson22
Finn.Anderson22@gmail.com



NATURROOM

Following the pandemic, there has been a rise in mental health cases amongst young adults. Naturroam is a range of camping kits inspired by the Norwegian lifestyle of friluftsliv, with the aim to create opportunities for young adults to take the first initial steps into nature to improve their mental wellbeing.





RORU

Roru is an armchair designed for those suffering from arthritis. The chair combines the functionality of assistive seating with a Japanese minimalist aesthetic, with the aim to move away from the industrial look commonly associated with assistive furniture. Enlarged arms and a rocking motion provide support and reduce symptoms of arthritis.

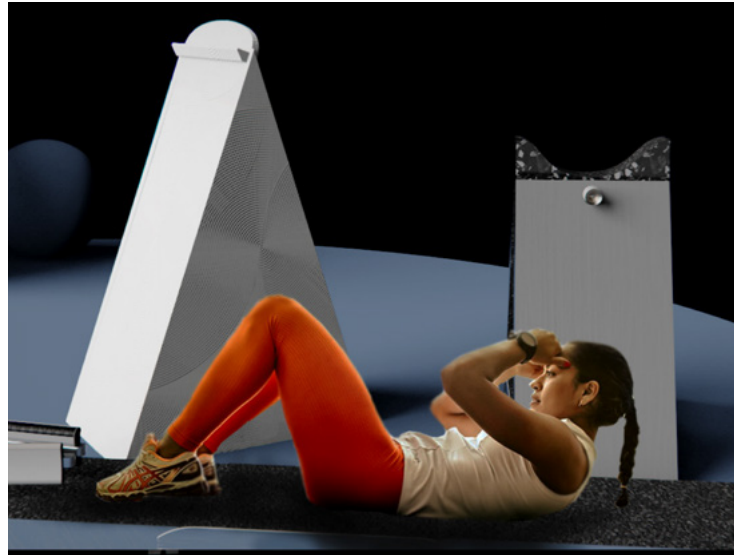




Dimitrios Apostolakopoulos

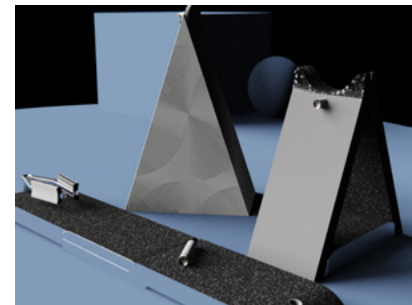
As a person that loves to help others, I believe that design is a very powerful tool for changing society to a better place. Every time I design, I remind myself of this and try to produce a product that is purposeful.

[linkedin.com/
Dimitris Apostolakopoulos](https://www.linkedin.com/company/dimitrios-apostolakopoulos)
j.apostolakopoulos@gmail.com



VIBRATION PLATE

The project brief was to design for a brand and specifically for a design-savvy, elderly market. The result was a vibration plate which could help the elderly to alleviate arthritis via the course of exercise, but also to produce a product that they could use as a seat when folded.





MOIRA

The product brief was to design an electric motorcycle that centred around the 25 to 33 year-old rider's need for comfort, emotion and aesthetics, while considering the sports bike's original heritage. The project outcome was a concept which enabled the rider to drive in both commercial and sport riding styles by adjusting the suspension geometry, handlebars and even mirrors through different bike setups.





Will Ashton

I have a keen focus for medical design and technical exploration, finding innovative solutions to purposeful problems. My enthusiasm for design is creatively expressive, learning and challenging design considerations from start to finish, using rapid ideation and CAD developments to progress ideas.

@will.desz
[linkedin.com/ will-ashtondesz](https://www.linkedin.com/company/will-ashtondesz)
willashton.desz@gmail.com



DOCK

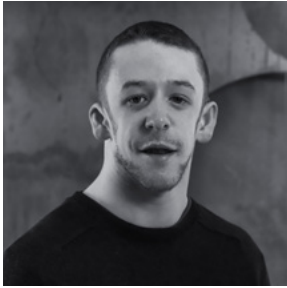
Dock is a multi-purpose kitchen appliance designed with usability and longevity in mind. Using a magnetic coupling mechanism, next to zero vibrations are produced during use, significantly reducing wear and tear on parts over time. With the employment of zero physical connections, Dock allows both appliances to simply snap on and off when changing between uses.



ORACLE

ORACLE was developed in reaction to the ambulance service's increasing response times. Members of the public can attach biomarker sensors on critically ill patients in need of an ambulance, sending live patient data to dispatchers and, in turn, paramedics on route, allowing for improved patient prioritisation and early injury prognosis.





Max Baldam

I am a hard of hearing designer. I have a unique outlook that I apply to my design. My ethos is that design should thrive to help the people around us, whether this be creating a better quality of life, or bringing more joy and happiness.

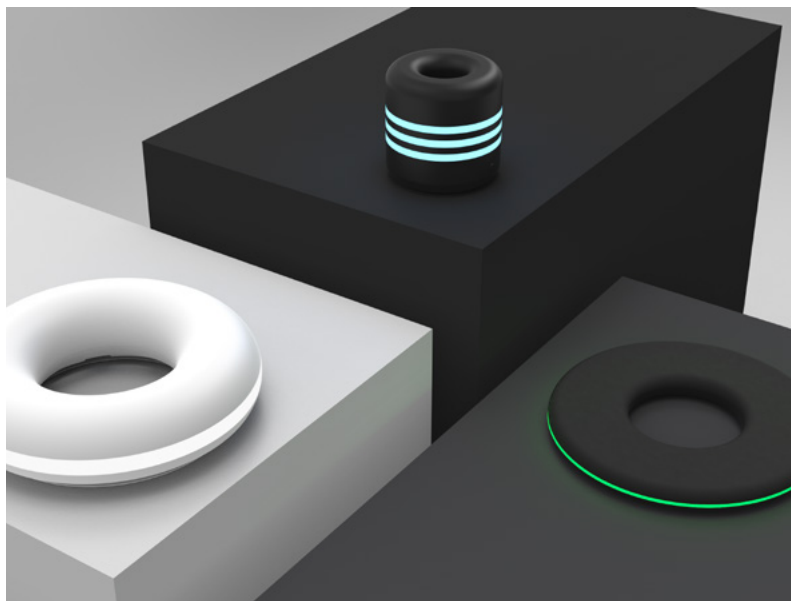
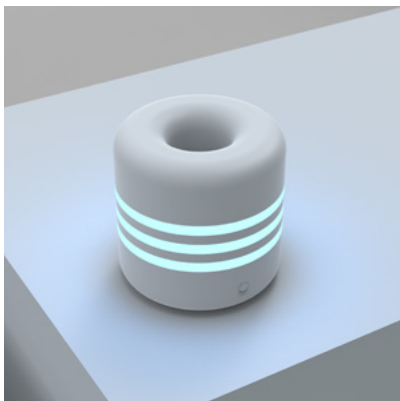
@maxb_design
linkedin.com/max-baldam
max_baldam@yahoo.co.uk



SENSO

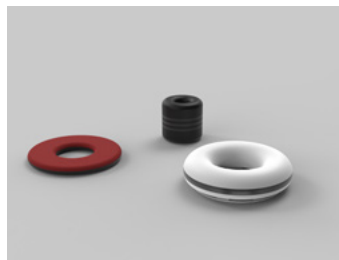
Senso is a diffuser designed to reduce stress and anxiety levels in the bedroom, whilst building a deeper emotional engagement. A way to get away from the 24/7 plugged-in culture, creating a new wellbeing ritual.





ORBIT

Orbit is a fire safety product to help the deaf and hard of hearing community. Creating a better approach to the products currently used in the home environment.





Cerys Benskin

Driven by a passion for change, I design for a more inclusive world. I believe that being open-minded and attentive to one's surroundings are the most important duties in my role as a designer.

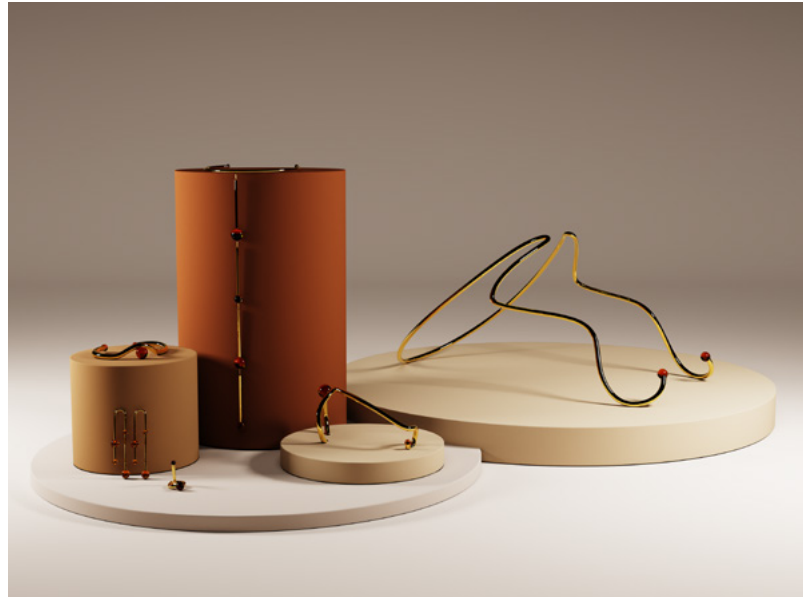
@_cr_designs
[linkedin.com/in/cerys-benskin](https://www.linkedin.com/in/cerys-benskin)
cerysbenskin@outlook.com



MOMI

The Momi have been designed to work cohesively as a sleep aid to encourage a more independent good night's sleep for young children. Designed for children between the ages of 4 and 6 years-old, the collection consists of a clock light, a room tidy and a pair of communicator devices.





ORNA

ORNA is an Afrofuturist jewellery brand. Its founding collection, 'Divine Connection', is a range of sculptural pieces that puts the black female experience at the centre of its narrative. Inspired by the dimensionality of black femininities, each individual piece has been curated to challenge the dominant vision of Western femininity.





Luke Billingham

I have a flair for design, a passion for sport and follow the latest footwear and fashion trends. As a designer I enjoy discovering problems and creating innovative solutions. The ability to combine my passions within design is something I have achieved in my final year and would like to continue as an aspiring footwear designer.

www.issuu.com/lukebillers
[@lukebillingham_design](https://www.instagram.com/lukebillingham_design)
lukebillers@gmail.com



STABILITEE

As we age, the demands on our bodies become increasingly difficult. The project aim was to design a singular, multi-use product for golfers who are 70+ years old. Stabilitee prevents the need to bend when teeing up/tee retrieval, placing/retrieving the ball mark and collecting the ball from the hole.





IMPRESION ADJUSTS

Footwear is becoming more important to the consumer. With a focus on comfort and ease of use, users are opting towards “ready-to-go” style shoes. The project aim was to design an innovative new footwear function that can accommodate the requirement for a laceless shoe.





Ben Carr

For me, designing is all about creating a sleek and modern looking product, which also has functionality as well as sustainability at the forefront. This can often be a challenge to achieve effectively, but I find the challenges involved with designing can be very rewarding.

@bencarrdesign
www.linkedin.com/in/bencarr1104
bencarr1104@gmail.com



SLOWGLOW

The SlowGlow morning light offers users the ability to wake up with ease thanks to its bright motorised light and speakers. The touch controls and scroll wheel also allows the user to control the light and audio without having to use their mobile device.





EPOCH

The Epoch table demonstrates a sleek design with great functionality. The three incorporated stools allow the owner to have additional seating in the living room without taking up extra space, whilst having a comfier surface to lean against, if they prefer to be on the floor.



Chanelle Chipps

I am a versatile designer keen to design products and services which solve problems and needs for specific consumers. The research element of the design process is something I have always enjoyed, giving my projects framework to develop a final product with meaning and purpose.

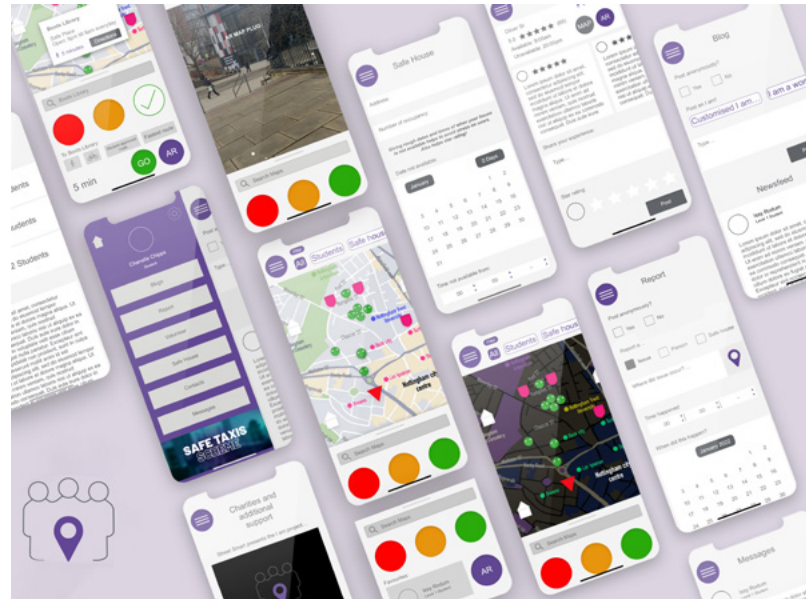
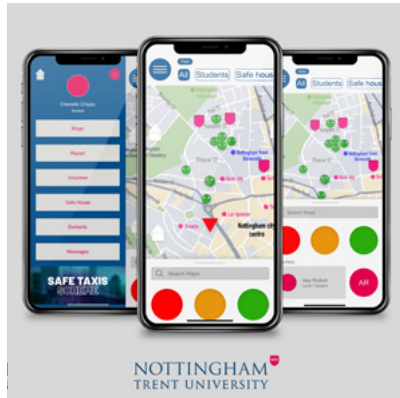
@cchipps_design
linkedin.com/in/chanelle-chipps/
chanellechipps2010@hotmail.co.uk



FORGET-ME-KNIT

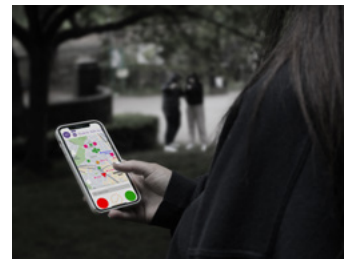
Forget-me-knit is a hobby kit. Ergonomically designed for an older user with early stages of dementia. I found there wasn't many creative products designed with an older user in mind. I wanted this kit to allow someone with dementia to keep their minds active and in-turn improve their mental health.





STREET SMART

Street Smart is a service application specifically aimed towards university students aged 18-24 who have moved to a new city and are unfamiliar with their surroundings. The app will help to create a trusting community within universities to ensure people feel safe and confident during their time at university.





Caitlyn Clark

I am a curious and hardworking designer, which can be seen through my design work. I am highly motivated and well-disciplined. I'm always looking to improve myself and push my designs further.

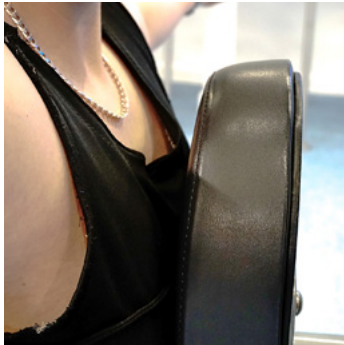


@caitlyn_clark_product_design
linkedin.com/in/caitlyn-clark-752563223/
caitlyn.clark@outlook.com



GALANTA MUG

The Galanta Mug is designed to bring beauty and pride to someone who struggles with drinking from a standard mug. It has an ergonomic handle which accounts for restricted grip, as well as having a void in the bottom of the mug to allow the mug to be cupped by another hand to aid drinking and to avoid burning hands.



BUFFER BRA

The BufferBra is a protective sports bra, with three removable cushions that help direct pressure away from breast tissue and onto the sternum and pectoral muscles.

It uses a cross over design to aid in compression and encapsulation.





Jacob Cran

I'm a passionate and thorough problem solver, which pairs perfectly with my enjoyment for creative subjects too. This led me to pursue a career in Product Design as I think they complement each other perfectly for it.

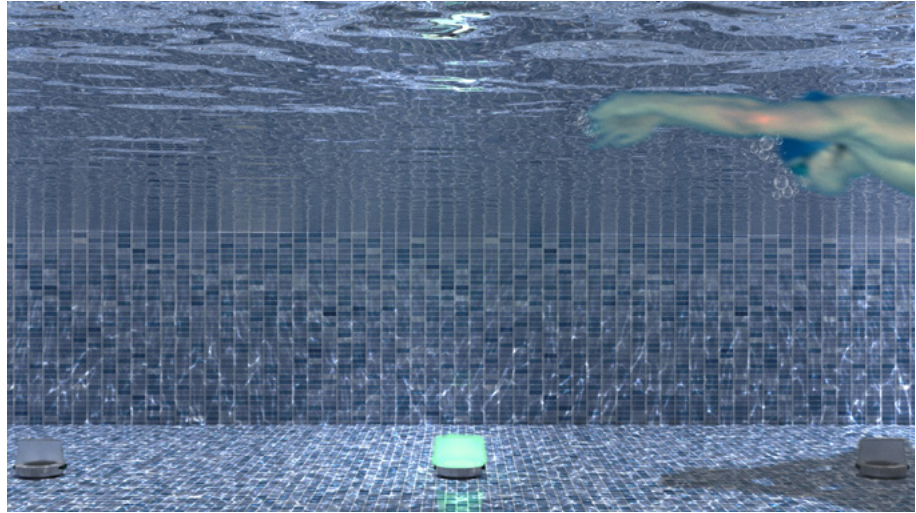


@jacobcran.design
linkedin.com/in/jacob-cran-b1a2a21b9
jacobwcran@gmail.com



AERATE

Aerate is a smart bedside table with the in-built function of an air purifier. Air is drawn in through the base of the product, cleansed within and then released out to the room. The contemporary design helps the table to look suitable within almost any environment it's in.



PACE FORM

PaceForm is a system of submersible lights designed to enhance training for swimmers, specifically providing simpler integration of pacing training. Light passes from unit-to-unit, telling the swimmer where they should be. They are configured within the app; setting the stroke, target time, and distance.





Jamie Cullen

I've been passionate about design and fitness since a young age. I decided that I wanted to create a career out of my passions, leading me to retrain as a designer. Through design, my goal is to give back to the sporting industry where I have a desire to make a difference.

[linkedin.com/jamie-cullen](https://www.linkedin.com/jamie-cullen)
jamie-leigh-cullen@hotmail.co.uk



ORNAMENTAL, ERGONOMIC 2KG HAND WEIGHTS FOR THE HOME

This brand designs ergonomic homewares for people with reduced mobility. Having experience within the fitness industry I wanted to create a pair of weights that would encourage the user to engage in home-based workouts. These ornamental weights would be on display, encouraging regular use, while creating an interesting talking point.





UNPLGD

I took the fabrics used within activewear garments and created a more inclusive range of exercise clothing for all body types. The garments are packable due to the nylon pouch along the side seam. The print is my interpretation of dazzle camouflage to help misshape the contours of the body.





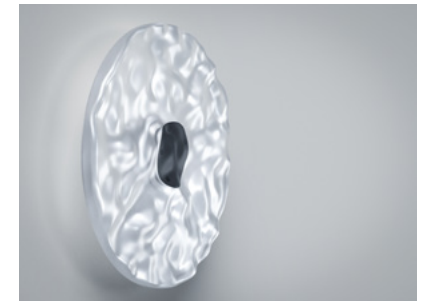
Ellis Cutler

Having grown up in China and having had great opportunities to travel, I experienced many different cultures, developed a love for cooking and saw beautiful natural scenery. These cultural experiences along with the natural scenery I have seen inspire the form and function of many of my designs.



RIPPLE

Designed to promote the importance of relaxation, Ripple is a self-dimming and rotating glass wall-light inspired by the gentle movements of water and the setting sun. Users control time and brightness by winding the light which dims while rotating to its original position indicating when it's time to sleep.



@ellis_cutler_design
ellis.cutler@me.com



SUMMIT

Inspired by the natural formations of mountain ranges, SUMMIT is a set of premium tableware design for sharing food between dinner guests. When not in use, the SUMMIT tableware stacks seamlessly to form a beautiful centrepiece for any dining room.





Tomi Daniels

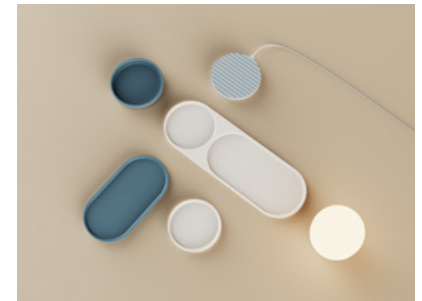
Being a creative, for me, has always been about problem-solving. Whether that is a simple product that declutters and elevates a space, or a service that supports small businesses, the goal is the same. Ask questions; design viable solutions.

@tomiddesign
[linkedin.com/in/tomi-daniels](https://www.linkedin.com/in/tomi-daniels)
tomidaniels@yahoo.com



ILÉ COLLECTION

The ilé collection is a range of sustainable, modular organisational furniture for small, everyday items. Including a wireless charger and wireless charging lamp inspired by neotenic design, it has the essentials to declutter your space and add joy. Made from hemp ABS, it is available in three colours.





Will Dexter

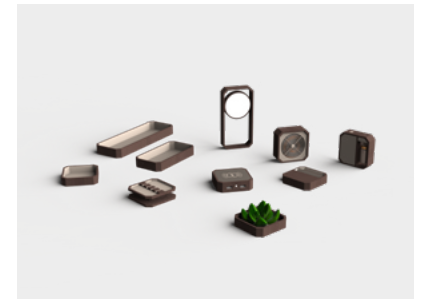
An enthusiastic designer driven by creativity. My passion for forward thinking design that resonates with people using human centred design comes from a love of designing for inclusivity and empathy above all else. My work ethic as a designer enables me to produce high quality work with a creative, commercially relevant and logical outcome. With a motivation for always questioning the why's the how's and what if's.

will.dexter00@gmail.com
07557642270
@designs._
<https://issuu/willdexter00>



CUSTOMIZABLE WORKSTATION

The first personalized, adaptable workstation designed for the hybrid worker. WORKBUDDY offers a range of customizable comfort, organizational and work products that are space optimizing and highly portable, allowing the employee to take their tailored workspace set-up wherever they find themselves working that day.





DYNAMIC WORKSTATION

The WORKBUDDY desk is a dynamic workstation designed for those living in confined, urban apartments with limited room for a home office set-up. The workstation provides a designated workspace at home and allows the employee to separate their home and work life by keeping work out of sight when the station is closed. Once the station is open, equipment is readily available symbolizing a productive day at work.





George Ebeling

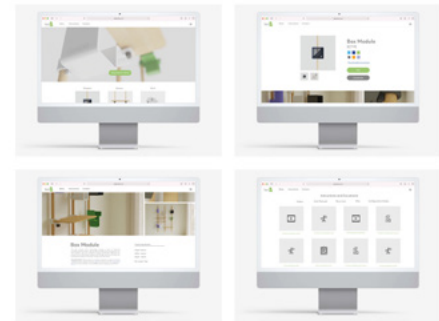
A background in engineering has helped me in my journey as a product designer. I have a passion for 3D printing and love to explore and learn new technologies. I believe additive manufacturing can help achieve a circular economy in a growing spectrum of novel applications.

issuu.com/georgeebeling
[@ebelingdesign](https://twitter.com/ebelingdesign)
[linkedin.com/in/george-ebeling](https://www.linkedin.com/in/george-ebeling)
ebelingdesign@outlook.com



SKYFL

An ergonomic garden tool designed to help improve the experience of gardening activities for users with mobility issues. This tool has been designed with a hybrid tool end to combine the functions of a shovel and a spade



TAPER3D

An adaptable shelving system that can be easily customised using a simple taper mechanism. Modules can be arranged and combined with different variations to suit the customers desired specification. These are available to be either ordered online or downloaded and 3D printed by the user at home.



Ellen Fox

As a designer, I have the drive to create innovative solutions that will enhance user experiences. Designing new and exciting products has always been my talent, with a love for active lifestyles and extreme environments. I have experience designing for a wide range of briefs and can apply my skillset to any task.

@ellenfoxdesign
 linkedin.com/in/Ellen-fox
 ellenfox1@hotmail.co.uk



TRAIL MARKER

A digitised solution to an outdated trail marking system. The device attaches to existing marking posts to provide more information to the users about the trail and environment to improve safety and stability. Live updates appear on the screen, and indicator lights help to direct hikers along the correct path.





STORMOR FOR SNOWBOARDING

STORMOR is a customisable storage solution brand for snowboarders, redefining how they interact with the products they use on the slopes to enhance their trip experience. STORMOR works to provide more freedom of movement, quick and easy access to the products they use and put focus back on the snowboarding itself.





Callum Garcha

During the design process, I utilise my creativity and reinforce it with a continuous aim to assist others. It gives me a feeling of fulfilment to know that a successfully designed product has benefited someone, hence my passion for product design

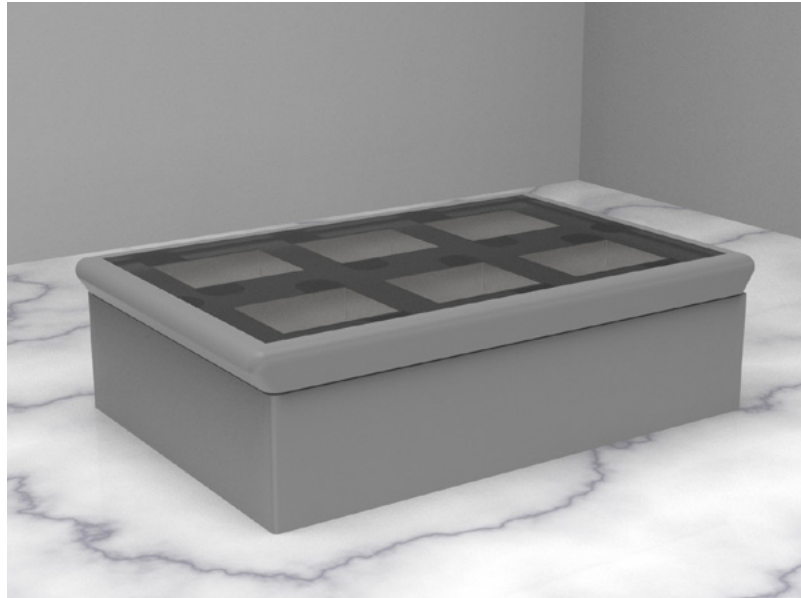
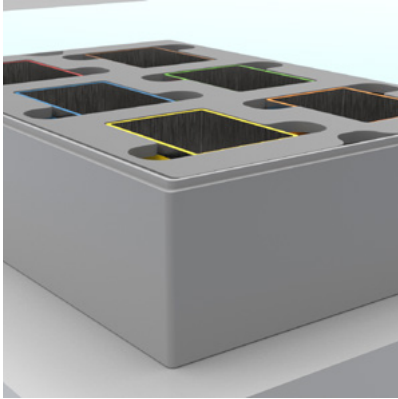


REST LIGHT

Rest light is a contemporary smart lighting product that shines a red light down on the user before falling asleep. With 30 minutes of red light, melatonin levels rise, allowing the user to go asleep and wake up refreshed.



@design_CSG
[linkedin.com/company/design_csg/](https://www.linkedin.com/company/design_csg/)
callumgarcha@gmail.com



EASY SPICE

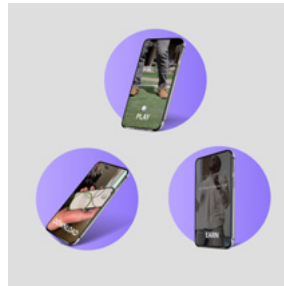
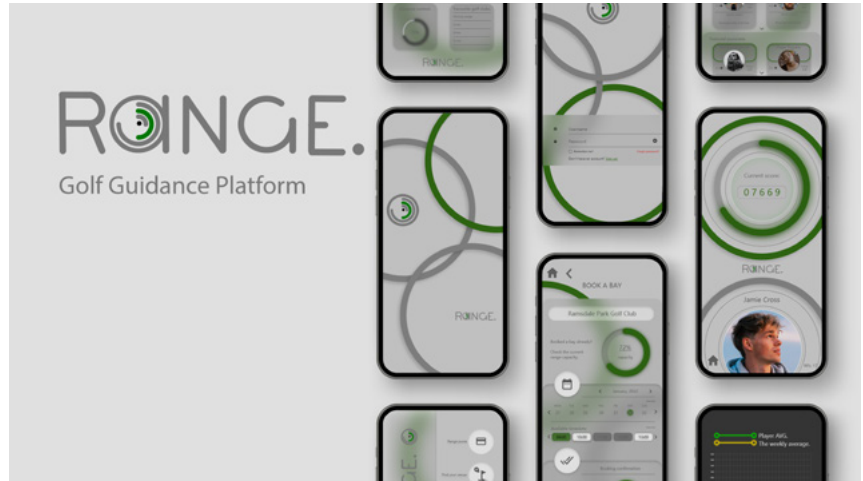
EasySpice is an Indian spice storage container that holds six essential spices. Each pot has a distinct colour that corresponds to a leaflet, outlining the health advantages of the spices. The contemporary form was intended to provide a new type of spice storage that suits current kitchen trends.





LJ Green

With a passion for UX / UI Design, I'm motivated in improving people's lives through design, solving problems through user centred research and conceptualisation.



RANGE

In 2020, UK driving range usage doubled from 2.3 to 4.3 million. Introducing Range, the new skill-based driving range league. Using focus groups, we discovered guidance and satisfaction prevents players from participating long term. Range provides the incentive and support to visualise your golfing presence for that handicap you've always wanted.

<https://uxfol.io/b5c76511>

@ux_mace

www.linkedin.com/in/lucasjohngreen

ljdgreen@live.co.uk





Thomas Green

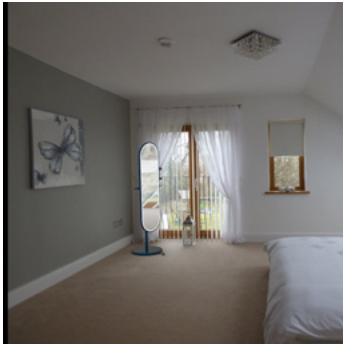
I am a keen problem-solver with a creative mind. I chose to pursue a career in product design to develop both my artistic and technical skills.



AIROMIS

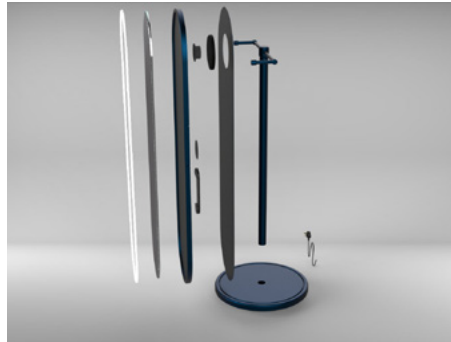
AirOmis is a collapsible, portable mini airing cupboard suitable for camping, road trips and other outdoor activities. AirOmis can store 2 pairs of shoes and hang multiple pairs of socks, gloves or other small items at a time. It can run from a 12V car battery and will dry items in only a few hours.

@tmgrndesign
[linkedin.com/in/thomas-green-5b47141bb/](https://www.linkedin.com/in/thomas-green-5b47141bb/)
tomjgreen@hotmail.co.uk



SPECULO

Speculo is a mirror and phone dock designed to keep the user off their phone at night time, and interacts with the alarm clock to illuminate the users bedroom in the morning. It also plays an extra loud alarm, encouraging the user to get out of bed and walk over to Speculo to turn off the alarm.





Jane J. Greganti

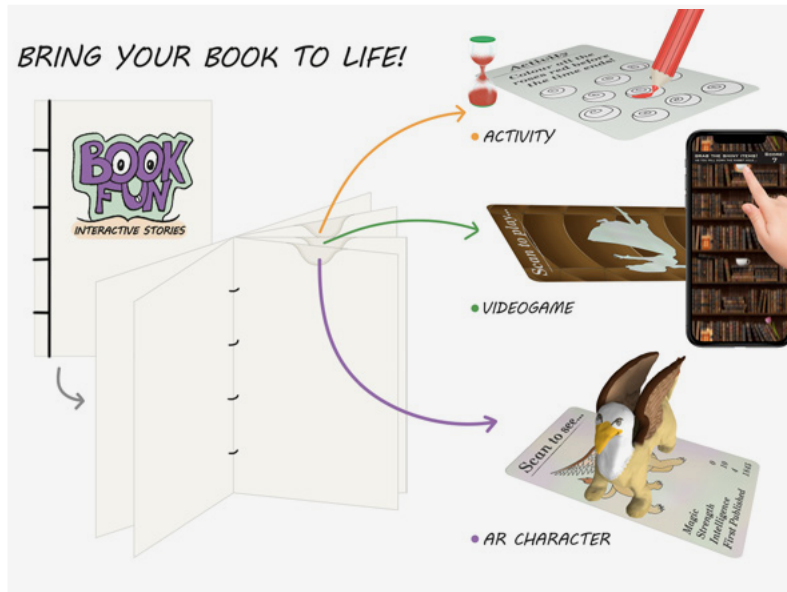
I am a half-English half-Italian designer. I value sustainability and user-friendly experiences. I believe that fun and simplicity should be at the centre of design. Sketch work and hands-on modelling are where I thrive. I have worked in packaging, making me proficient at creating digital artworks.



THE FUTURE OF VENDING: VM 2.0

Vending machines have not changed dramatically in over 140 years. VM 2.0 is a fun and interactive vending machine for festivals. While waiting for the snack, the user can play a game and take a selfie. Designed in stainless steel to make it as durable as possible.

www.issuu.com/janejgreganti
[@janegreganti_design](https://www.instagram.com/janegreganti_design)
[linkedin.com/jane-greganti](https://www.linkedin.com/company/jane-greganti)
jjgreganti@gmail.com



BOOKFUN: INTERACTIVE STORIES

BookFun Interactive Stories contains interactive cards linked to the book. There are three types of cards: Activity, Videogame and AR Character. Reluctant 8-12 year-old readers are rewarded with a card at the end of each chapter, to further engage with the story and have fun.



Luke Harrison

I'm a life-long, passionate creative with a background in furniture design. As a designer, I like to adopt a hands-on approach to problem solving, utilising my skills in model making, sketching and CAD to create functional and beautiful product and furniture solutions.



SENSO

Senso is an interactive and sensory stimulating desk accessory aimed at improving the mental health and wellbeing of the ever expanding proportion of hybrid workers. Inspired by biophilic design, the product encourages users to take time away from screens and spend a moment relaxing from work.

@luke.harrison.design
linkedin.com/in/luke harrison
luke100100@gmail.com





YASUKO RECORD STORAGE UNIT

Drawing inspiration from traditional Japanese design philosophies and craftsmanship, the Yasuko unit is a functional and decorative furniture piece for proud record collectors to house and display their collection. The piece is constructed from high-quality solid ash and utilises traditional wood joining techniques.





Huiqin He

I am a designer with a passion for bringing warmth, joy and positivity to the world and wanting to be a presence that has a positive impact on the world.

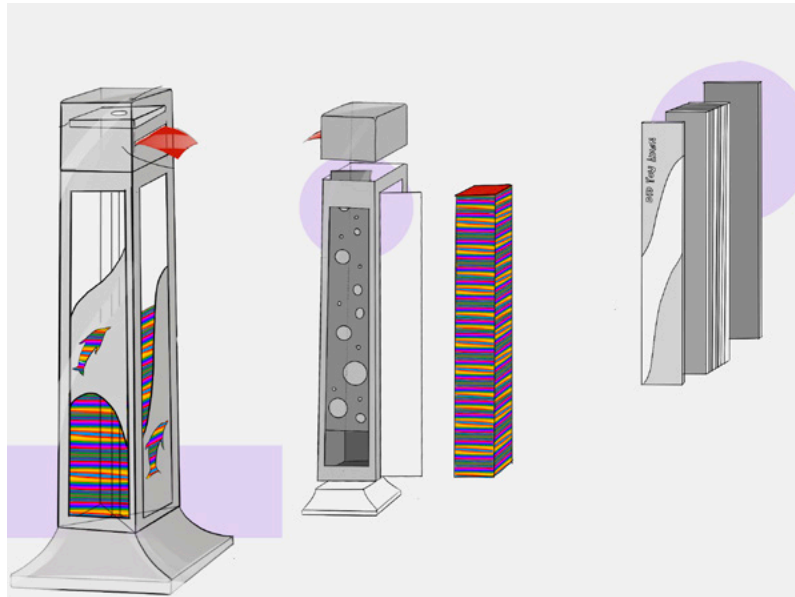
@instagramhhedesign
linkedin.com/in/huiqin-he
huiqin8@email.com



MILDRED

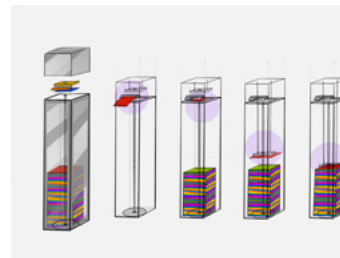
Mildred aims to provide appropriate exercise for seniors with a sedentary lifestyle, in order for them to achieve a stable and physically active later-life. By collecting the screen time and sitting time of senior users, Mildred will arrange a reasonable exercise plan and reminder.





PLAHUNT

Inadequate attention is being paid to the impact of low-value plastic waste from humans, resulting in a large influx of harmful waste into nature. Plahunt is a recycling point designed to stop plastic from used crisp packaging leaking into the environment.





Suet Sum Ho

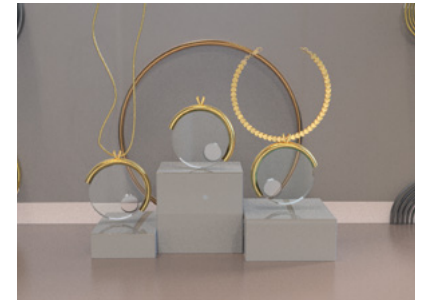
As an emotional person, I always had a high sentimental value, not only to my relatives but for products too. I am passionate about user experiences. I believe that the right product can be powerful enough to bring out people's emotions. I also believe that product aesthetics will affect how people see a product at first glance, which drives my design process.

@hss.pd
suetsum.pd@gmail.com



JEWELLERY MAGNIFIER

Jewellery Magnifier aims to improve usability for the elderly. Designed for the 76+ market, it helps with eyesight conditions and aspect vision change to bring joy in their later life. Users can choose between a necklace or bracelet, which is easy to style with their everyday wear. Made with pure 18K gold, this magnifier is an elegant and long-lasting accessory.





KAAX

In order to prevent bacteria from growing and spreading, it is important to clean every edge inside the kitchen. The KAAX deep cleaning tool is designed for people to more effectively address cleaning conditions, helping them keep their kitchens hygienic and clean. At the same time, it could be an excellent chance to educate people on the importance of cleaning the kitchen. The date dial allows the user to quickly remind themselves when they last deep cleaned their kitchen or to schedule their next cleaning date.





Joseph Hordern

I have always had a passion for design and creating exciting products that help improve the end experience for the user. I enjoy a good challenge when designing and grasp any opportunities presented.



KOLMIO

A small cable organiser designed to make hybrid working better for the average worker. It helps neaten your cables when stationary whilst also making it incredibly easy to transport your cables between the office and home with a clip-and-go style attaching to your rucksack.

@joseph9012_design
linkedin.com/in/
joe-hordern-ab3790172/
josephh12@hotmail.co.uk





FORZA

Personal Load Carry Equipment, especially the webbing, was originally designed for men and has had a range of problems linked to it. My design looks at generally improving the design whilst giving a larger range of adjustability to better fit females and smaller males.





Najib Islam

I heavily believe in the holistic approach to design. My process puts the user at the very centre of my work, trying to discover their wants and needs before they know it themselves. I strive for innovative solutions with longevity and consumer loyalty in high regard.



THESEUS' TOASTER

Theseus' Toaster is an innovational design from bottom up. It attempts to promote intimate connections between user through effortless maintenance and personalisation. The toaster industry has had no major electronic breakthrough which has lead to consumers buying disposable toasters solely based upon aesthetic.

@art_najib
Linkedin.com/in/najib101/
Najib.i@outlook.com



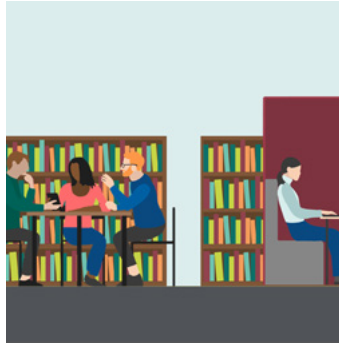
DYADIC MEDITATION

Grain is a sand timer which is used to facilitate dyadic (partner) meditation. Sand is poured out of the funnel hitting a 'soundboard' made from assortments of materials. Each material resonates at a different amplitude of rainfall/ waterfall. The product was designed to bring awareness to the communication of intimate relationships.



Maja Kaszuba

I am excited to be part of the force of designers that create the world around us and strive to do so responsibly and with the goal to influence change for the better. I am passionate about art, materiality and bringing people together.



NOTTINGHAM WORKS

Nottingham Works is a flexible system which allows any library to be transformed into a space for remote work, in a bid to tackle loneliness and help to fund public libraries. It consists of three key elements: a marketing campaign, a booking app and a guide for the space.

www.majakaszuba.co.uk
[@majakaszubadesign_](https://www.linkedin.com/company/majakaszubadesign_)
[linkedin.com/](https://www.linkedin.com/company/majakaszubadesign_)
 maja-kaszuba-0002
maja.w.kaszuba@gmail.com



RECAST

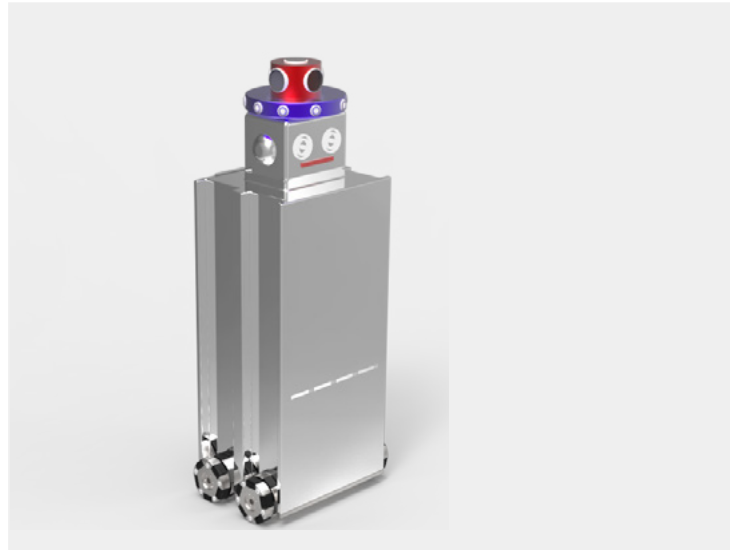
Recast is a range of homeware made from a composite material that uses recycled ceramic waste. It aims to show that waste should be viewed as a resource rather than something to get rid of, and explores the value that is added to an object through the narrative of its material origin.



Harjoat Kaur

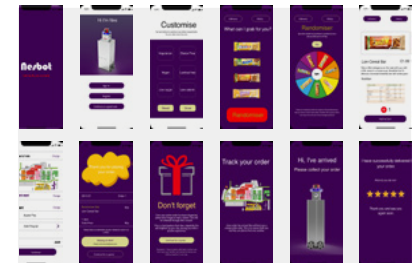
I'm a self-driven woman, who strongly believes in honesty. I want to make an impact and be a part of creating a world which takes into consideration the needs of the people and the environment. I draw inspiration from nature and enjoy manipulating traditional techniques to create unique and sustainable design.

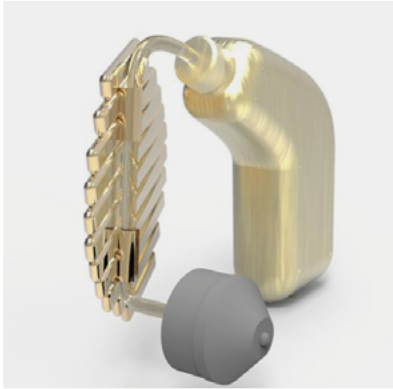
@harjart
[linkedin.com/in/harjoat-kaur](https://www.linkedin.com/in/harjoat-kaur)
harjoatkaurdigpal@gmail.com



NESBOT

Nes is an autonomous robot which provides convenience as it comes to you. An engaging experience is provided through the app and dispensing process. Nes is a friendly, playful robot which will be used in children's hospitals.





ANKRS

Rechargeable ANKRS are used to enhance the user's hearing quality. The compact, portable, rechargeable case will allow people to never go without hearing. These jewellery pieces allow young people to feel empowered and express a sense of individuality.





Oscar Kay

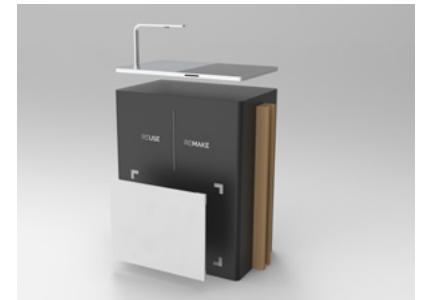
I am a hands on, innovative designer with a passion for fashion and textiles. My main aim is to make this industry more sustainable through my design thinking and style, this is showcased in both of my projects.

[linkedin.com/in/oscar-jackson-kay-b5538b140](https://www.linkedin.com/in/oscar-jackson-kay-b5538b140)
oscarkay11@gmail.com



REMAKE REUSE

REMAKE REUSE is a 'pop up' event for selected stores, designed to encourage consumers by means of incentives, to either re-cycle or up-cycle their old clothes in aim of tackling the impact the fashion and textile industry has on climate change.





REVIVERY

Revivory up-cycle old event banners into duffel bags and accompanying accessories. The Revivory London 2012 Olympics Duffel Bag was created as an example of this product, made from an old 'London 2012' street event banner and games makers' jackets and bags, giving this tactile and long-lasting banner a new life.





Ethan Kendle

I am passionate about creating futuristic products that challenge the issues of today, pushing the boundaries of modern design. I am always inspired and excited to be experimenting with new concepts and innovative technologies to find new ways to produce cutting edge products.



www.kendlecreativesolutions.co.uk
[@kendledesign_](https://www.instagram.com/kendledesign_)
[linkedin.com/EthanKendle](https://www.linkedin.com/company/EthanKendle)
kendlecreativesolutions@outlook.com



MOBIUS

A speaker for the future. Mobius was inspired by the circular economy and issues with sustainability in design. With environmental issues becoming an increasingly hot topic, this speaker sets out to question how we can design desirable products that are sustainable by considering end of life, recyclability and repair.



ENVIRO

The future of VR. Enviro allows users to feel the sensation of temperature in VR. By using a bladeless fan integrated with heat-sensing and user-tracking technology, we can create a facsimile of the temperature and wind conditions of a simulated VR environment, creating a much more immersive experience for the user.

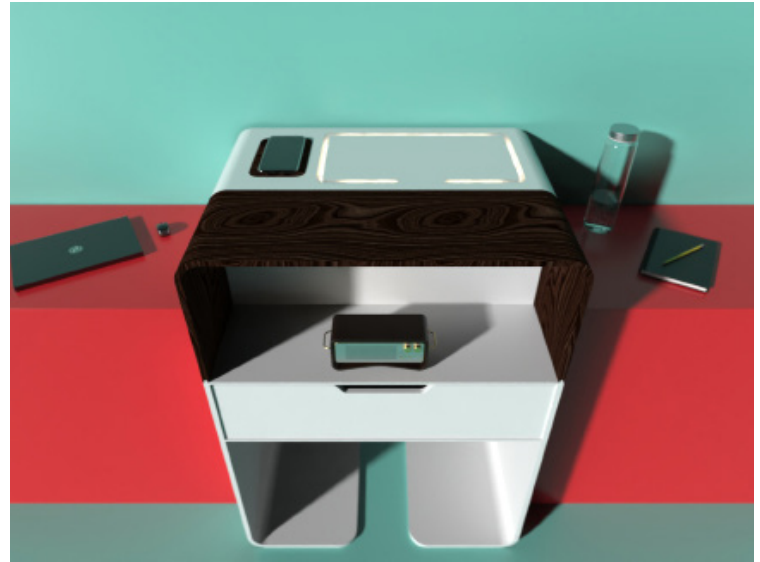




Atef Khasawneh

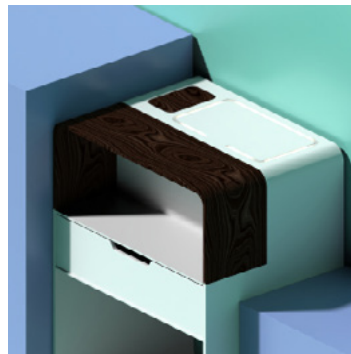
An innovative and unorthodox designer equipped with a diverse set of techniques that, paired with my in-depth knowledge of the art world, enable me to breathe life into the wildest of concepts.

[linkedin.com/in/atef-khasawneh](https://www.linkedin.com/in/atef-khasawneh)
atefkhasawneh@gmail.com
[@atef_designspectrum](#)



TAVOLINO

A bed-side table that bridges the gap between SMART and bedroom products in a harmonic fashion. Equipped with a built-in NFC tag, the table can charge and trigger an alarm upon detection. It also possesses a detachable table that seamlessly detaches to convert to a laptop tray.





GLASSTEGRAL

A mask designed for glasses wearers to prevent the fogging of lenses. The mask utilises a built in silicone insert which controls the airflow, diverting it out the sides while simultaneously taking the perfect fit of the users nose bridge. It also provides additional filtration using a PM2.5 Filter.



Tom Lacey

As a designer I enjoy all types of creative challenges, but have in-depth industry experience in the design of fitness and wellness products. I excel at investing a broad range of solutions and visually communicating my ideas to clients through a range of physical and digital mediums.

issuu.com/tom.lacey110
[@tom_lacey_design](https://twitter.com/tom_lacey_design)
[linkedin.com/tom-lacey](https://www.linkedin.com/company/tom-lacey)
tom.lacey110@gmail.com



FLO: YOUR HOME PHYSIO

Flo improves older adults physical stability by encouraging movement and improving the traditional process of physiotherapy. After the age of 30 muscle mass deteriorates at a rate of 3-5% per decade if left untrained. Flo is a home physiotherapy device, its functions consist of personal physio programs, AI supported physiotherapy, AI form prompts and calls with physiotherapists.





EQUIVISION

Equivision is a riding helmet with internal cameras. Having the camera technology built into the helmet makes the riding experience safer. The cameras act primarily as a deterrent to dangerous drivers. Driving behaviour improves when riders wear a head cam. If an accident was to occur, footage recorded by the camera can be used as evidence in a court.





Charles Lanni

The driving force behind my design style is woodworking. Crafting products with such a versatile and sustainable material provides natural organic beauty and qualities that are sometimes detached from modern design. The prevalent use of wood in the home has guided my creativity towards furniture and furnishings.

[linkedin.com/in/charles-lanni-192a991bb](https://www.linkedin.com/in/charles-lanni-192a991bb)
charles_lanni@outlook.com



925 TABLE

The 925 Table was designed for people working from home, targeting users with limited space who are in need of an office. It has two lids that can be lifted to reveal storage and a desk, creating a seamless transition between work and social life within the home.

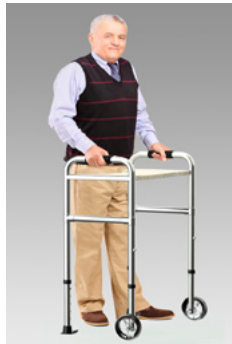






Xinyu Mao

I am a practical designer and I believe that product ideas come from our daily lives. I value gaining ideas from talking with people. As a designer I believe that detailing is important in the design process.

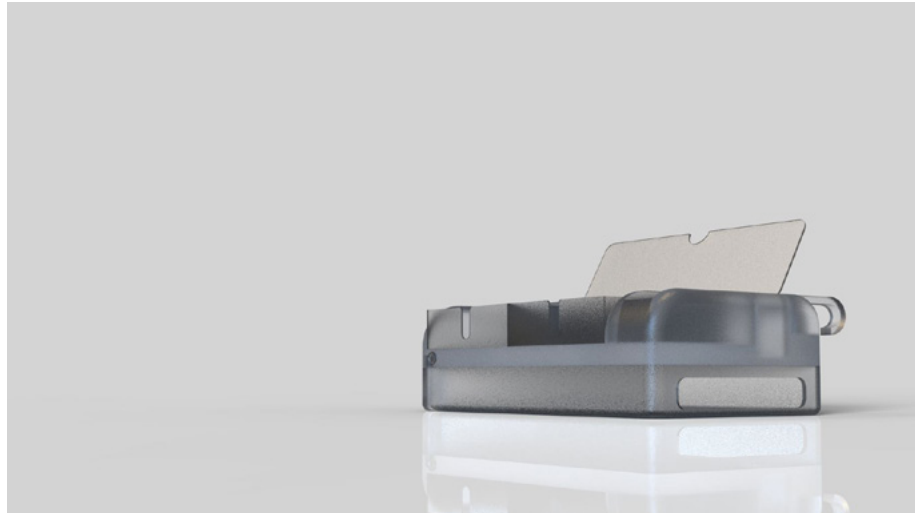
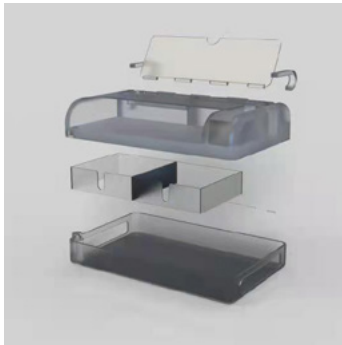


1399685712@qq.com



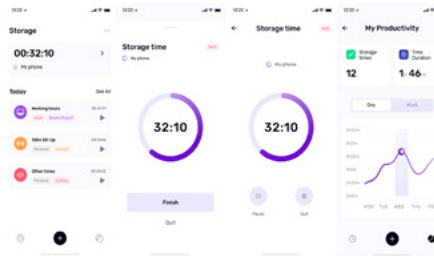
WALKING FRAME

This product is a walking frame for the elderly, which can be folded and stored. It has LED lights on the bottom of the table plate to help the elderly see the floor in dimly lit areas.



PHONE LOCK BOX

This product is a phone lock box with a storage function where the phone can be inserted from the side and removed from the top. The phone lock box can be connected to the phone to control the storage time.





Callum McCann

I am a pragmatic designer, with the ability to adapt to any project scenario and create a solution with a plausible design. I like to include features to a product so they can change functions with simple movements within. Using this ideology, products will have features that allow the product to adapt to any space. I believe when designing products, they don't have to solve a problem but change how we perceive a product's function.

@callumccann.dsgn
linkedin.com/callum-mccann
maccacan2001@gmail.com



BYGGA- COMMERCIAL

'Bygga' is a refreshing modular workstation, using analogy technology to create a grounded and simplistic study organiser, designed for school students. The creative system uses stylish components that lock into a plywood pegboard, which produces a modular working area.



PLANTA- SELF-DIRECTED PROJECT

Planta is a storage system specifically designed for the storage and growth of indoor plants. To promote green space in urban environments, Planta allows the user to grow any plant they want, from cooking herbs to larger plant species. A plant climber feature allows the growth of plants on to the product from the side. The modular system allows the features to be arranged to the plant's needs which creates a unique connection with the user.





Poppy Medcalf

As a designer, I have a passion for creating products that are functional yet aesthetically pleasing, with an overall aim to bring joy. I like to focus on getting the details right by exploring materials, textures, and colours, and hope to encourage connections between products and consumers.



HYBRID

Hybrid is a locker system designed to make it easier to carry work equipment between the office and home, especially in offices with hot-desking policies. The lockers include removable bags that can be placed underneath desks to become drawers, whilst the backpack makes it easy to carry everything on the commute.



@poppymedcalf.design
linkedin.com/in/poppy-medcalf
poppymedcalf@live.com.au



RE:KNITTED

Re:knitted is about redefining and rethinking who can knit and what can be created, with the aim of encouraging more people to see knitting as a craft. It is about connecting modern design with traditional crafts to create contemporary and timeless design pieces that people want to hold on to for years to come.



Madhav Mistry

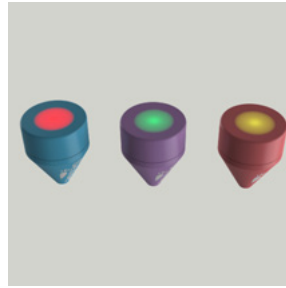
I am a hands-on designer with a practical approach to problem solving. I enjoy working with various materials and further developing my skills and knowledge by learning new methods. I use my surroundings for inspiration in my design process and believe anything can be inspirational with the right approach.

@madhav_mistry_design
linkedin.com/in/madhav-mistry
madhavm@live.com



THE NEW LANGUAGE OF SUSTAINABILITY

Hygieia is an electric toothbrush made with aluminium which has interchangeable parts. Users can buy replaceable parts when they need, such as batteries as well as upgrading parts such as the motor. Hygieia also allows the consumers to attach a shaving attachment, giving them convenience in their morning routine.



FOOD WASTE

Sense is a range of colourful sensors designed to monitor fruit and veg. Sense attaches to pre-existing containers using magnets and is then programmed using the app via tapping the sensor with your phone. The sensors indicate produce condition visually, as well as sending notifications to your phone.



Priya Modhvadia

I am an enthusiastic designer who is always open to learning new things, building up my skills and knowledge. Product Design is something I have enjoyed since secondary school. All area of design interest me from furniture to technology-based products, they all require an open mind and different ways of thinking.

[linkedin.com/in/priya-modhvadia](https://www.linkedin.com/in/priya-modhvadia)
priya22.modhvadia@gmail.com



RORI

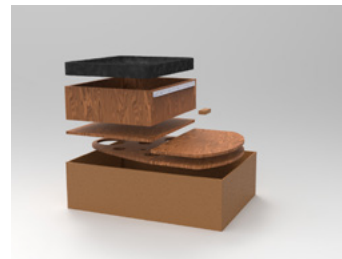
Rori is a bedtime toy for toddlers who are starting to sleep in their own bedroom separate from their parents. It is a step-by-step routine that they would follow at bedtime completing each part which then results in receiving a sticker as a reward. Each slot lights up when the task is complete and put into the base. The 3 main tasks were 'brushing teeth', 'reading book' and 'changing into pyjamas'.





ARC

Arc is a product made to reduce the clutter of cat products around the home as well as a sleeping/lounging area for them. The whole design is flatpack and the process is very simple to put together. The hollow circles are there to make it light and airy as well as make it playful for the cat.





Alex Morris

I have always had a great desire to create and innovate products, observing the problem from many viewpoints to create the best possible outcomes. I often find myself looking deeply into my surroundings, finding ways to refine the products around me and gain inspiration to drive my creative mind.

@alexmorris_ntu
linkedin.com/in/alex-morris
alexmorris554@outlook.com



PORTAPOWER

PortaPower is the new breed of wireless charging, tailored for the modern working lifestyle. Designed for use at home and on the go, PortaPower is a convenient solution to keeping the world ever connected, through ensuring your essential technology is always ready to go.





ALICAST

Introducing AliCast, the innovative drum equipment carrying system designed with the drummer in mind. High quality, modular cases assemble together with ease, while providing protection & transportation with minimal hassle. Make it to your venue in less trips than ever before, leaving more time and energy for doing what you love.





Nisar Nagia

I am a creative who is motivated to use my skills to build positive social solutions. I use my ability to communicate and understand real-world problems that people face. My goals are to pursue philanthropic design while utilising my unique skills with various media.

@nisar.nagia
www.linkedin.com/in/nisarnagia
nisar.nagia@hotmail.com



ARCADIUM

Arcadium was designed to promote well-being by utilising the benefits of an aromatherapy diffuser. Assisting with the mental development of humans constrained by modern-day stresses, Arcadium innovates on current solutions by redesigning a unique diffusion method to fit seductively within any room to provide an exclusive element of relaxation.





JOI

A remedy for social disconnection. Joi is an interactive outdoor projector that employs artificial intelligence to cast games among passers-by to foster human interactions. It stemmed from a desire to create infrastructure that promotes positive societal benefits and rebuilds a more connected society through joy.





Fredrick James Owen

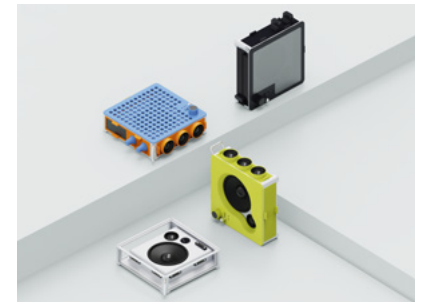
My journey as a product designer has driven me to become a detail-orientated creative, with a particular fascination with colour and materials embodied with layers of narrative. Following university, I intend to pursue this interest and seek experience in the field of material research and design.

@fredrickjamesowen
linkedin.com/in/fredrick-james-owen-product-design/
fredrick.owen@hotmail.co.uk



COLLECTIV ONE

The modular speaker is orientated towards the desire for self-expression. With a choice between nineteen customisable parts, dials and sliders can be configured to control audio options. These parts can be enhanced if paired with extension modules like the additional tweeter panel, providing the user with a higher range of audio frequencies.





POLYNEWTON

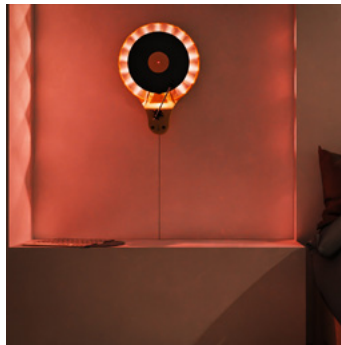
Using wastepaper cups, pulled straight from the bins of NTU's Newton and Arkwright buildings as well as waste coffee grounds sourced from Newton's cafés, combined with a natural binder of dehydrated egg white, the 'new' material 'Polynewton' aims to make the university and the public more curious about the future of consumption.





Josh Pinard

I strive to develop and excel within design for sport. I design with inclusivity in mind, and I want to be a contributor to the development and growth of hockey through design. I aim to challenge my originality and innovation when I design.

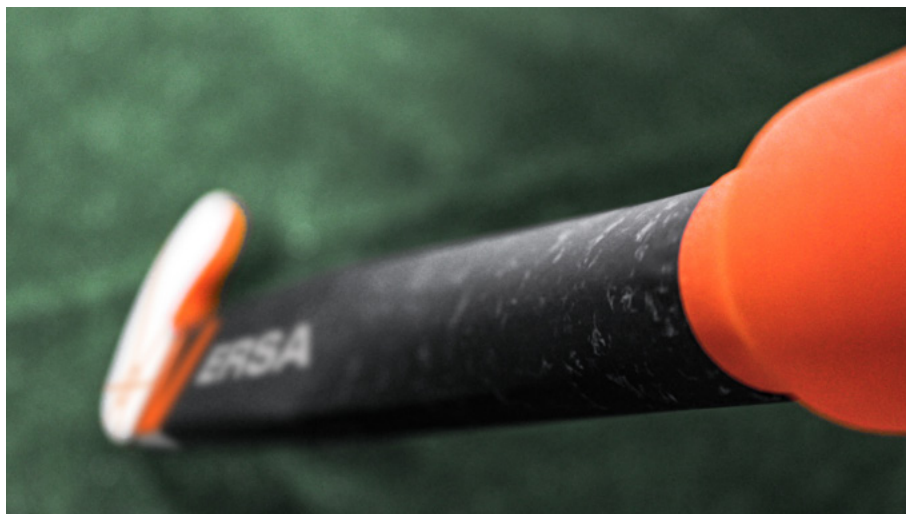
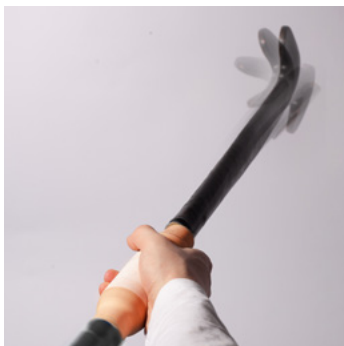


@pinard.esign
linkedin.com/in/josh-pinard
j.pinard.design@gmail.com



SHALOO

Shaloo is a wall-mounted record player that utilises a handcrafted origami fan to disperse kaleidoscopic lighting. This product encourages the user to relinquish the screen and interact in a multi-sensory experience. This product delivers a whole new perception of analogue formats.



VERSA SP1

The Versa SP1 is a field hockey stick developed for disability hockey that utilises a rotational spindle grip. This community-led project aimed to create a statement to encourage inclusion within sport. The spindle grip guides users on how to use a field hockey stick to promote cognitive development through learning.





Sahal Sayedmiam

I am a user-focused designer, with a key attention to detail and visuals. I'm passionate and driven to achieve successful outcomes in all pieces of work. This is portrayed throughout my time at University and in work. I'm eager to progress in to the world of work, to produce and develop new solutions.

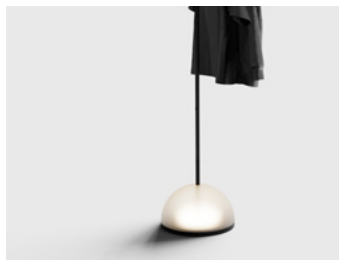
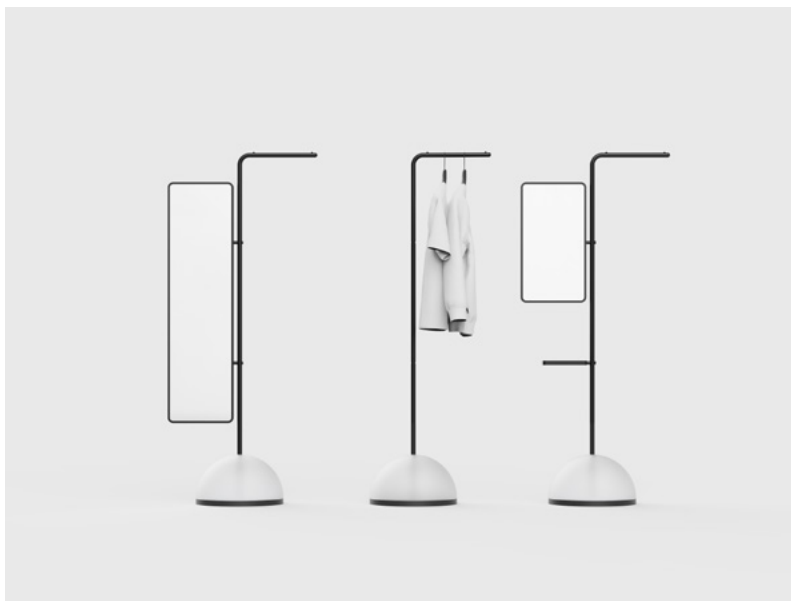
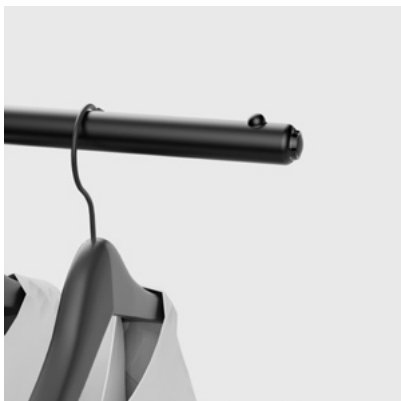


CURE

CURE was designed to combat the morning rush of getting ready, as well as providing relaxation in the bedroom. A customisable clothing rail designed to hold up to four items of clothing. The built in mood light in the base helps relax the user without the stress of what to wear the next day.



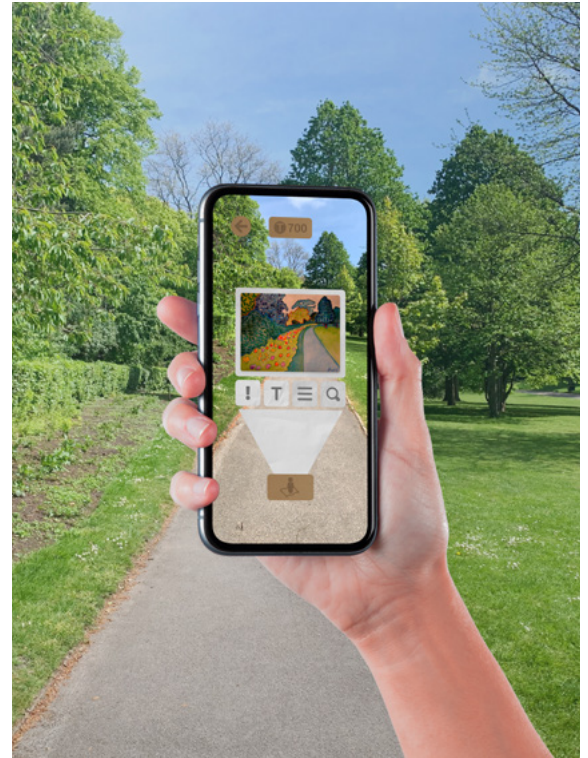
@sahalsdesign_
linkedin.com/sahalsayedmiam
sahalsayedmiam@outlook.com





Jacob Siggery

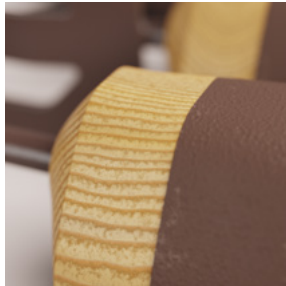
I'm a creative individual that enjoys working with sketch models and sketching. Final year has developed my interest in app development. Outside of product design I have an interest in electronic music and exploring.



DISCOVERY

This project is an app that aims to encourage exploration. Users select a close-by area of nature in the app and are directed there. Upon arrival augmented reality posts artwork related to the location, which can only be accessed when the user ventures to the spot where they were posted.

@jacobs_design1
linkedin.com/JacobSiggery
JacobSiggery1@gmail.com



ARTHRITIC GARDEN TOOLS AND CARRY

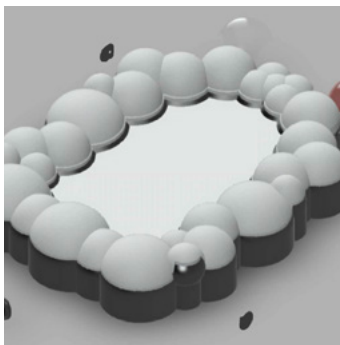
This project is a set of hand tools and a carry aid for arthritic people in later life. The wide handled form was developed through testing with the target market. Padded ends to the handles allow for low strength users to push the tool down with their wrist. The carry aid can be carried like a handbag or toolbelt dependent on user preference and can be attached to a kneeler or Zimmer frame.



Jade Smith

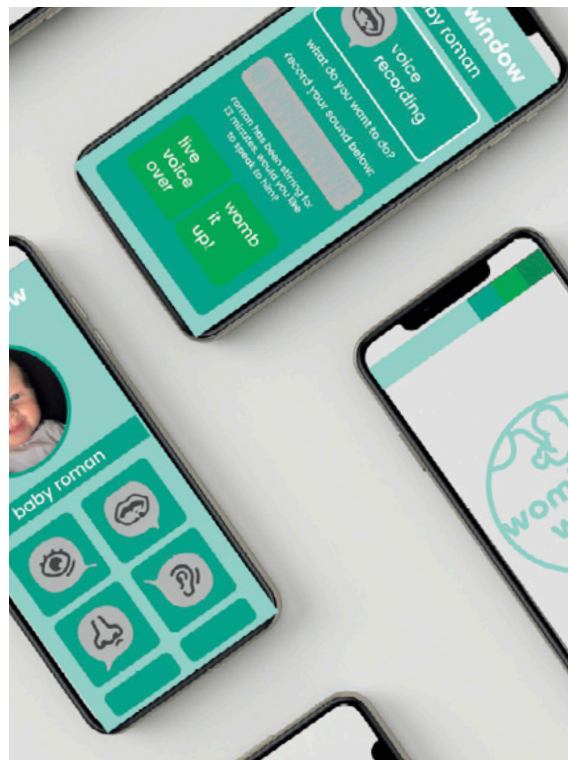
An innovative designer with a passion for branding and user-centred design. I have a massive passion for fashion and a big interest in sustainability. I love to design with a focus on fixing problems, and I am always quick to think on my feet when designing for a consumer. I love to incorporate my passions and hobbies within my designs to create the most exciting and effective solutions, with ultimate user satisfaction.

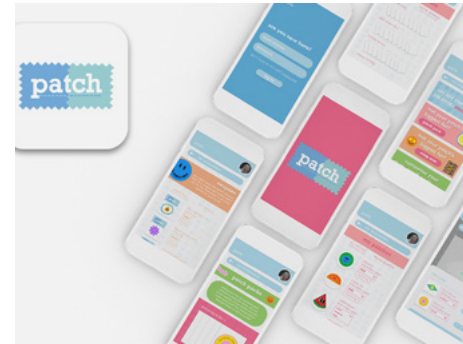
@jadesignsbyjadesmith
linkedin.com/in/jade-smith-078414170/
jadeys@live.co.uk



WOMB WINDOW

Womb Window is a sleeping system to encourage self-settlement for babies aged 0-18 months. With red ambient lighting, a surround sound system and water-cooling technology to regulate body temperature, the bed produces a womb-like environment to give babies and parents a good night's sleep.





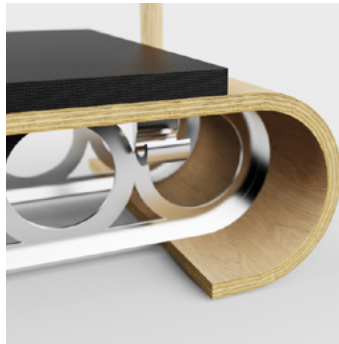
PATCH

Patch is a sustainability-fuelled upcycling kit to encourage young people to engage with the circular economy and rework old clothing, to minimise fast fashion overconsumption. It's accompanied by an application to implement hyper-personalisation and trade-off patches to increase product longevity.



Elizabeth Stewart

Designing has always been my passion from a young age. I have always loved design and creating a product to help people's needs. I am a very hands-on designer and love making models, trying out different materials and experimenting.



@elizabethstewartdesign
linkedin.com/in/elizabeth-stewart-
stewartelizabeth31@gmail.com



STEP

STEP is an at-home piece of equipment which can be used to do balance, flexibility and joint-strengthening exercises. It is accompanied with an exercise book which can be used as inspiration for exercises. Aiming to help older generations to stay fit in the comfort of their own home.



PROTAG

ProTag is a tracking device and app to keep women safe when they run in the dark. It has a projection onto their shoe which lets people around them know that they are being tracked, to keep them safe. It has an S.O.S button on the top if they are in danger which can be pressed and a help message along with their location gets sent to their chosen contact.





Abdul Sulaiman

I am a driven creative with a passion for interior design and visualisation. Regardless of the project area, I always endeavour to apply myself fully, and to bring my technical skills and work ethic to the table. I see every project as an opportunity to elevate my knowledge as a designer.

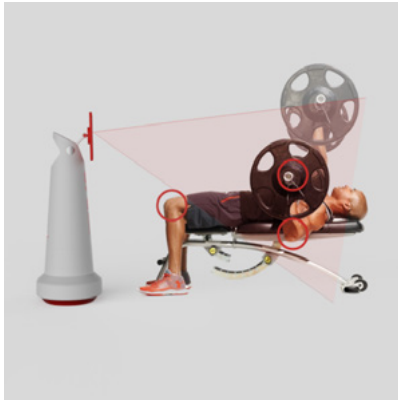
@as_creativspc
linkedin.com/in/abdul-sulaiman
abdulsalam_s_b@live.com



UNA LAMP RANGE

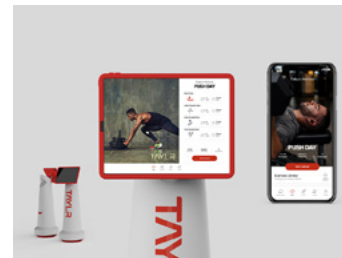
UNA lamp combines quality sound and customisable lighting to bring smart functionality to the bedroom. The UNA range is designed to improve task-based efficiency by providing smart adaptable lighting. A stylish addition to the bedroom that also doubles up as a speaker in an elegant fashion.





TAYLR TRAINING SYSTEM

Taylr is a digital app that utilises both A.I and human personal consultation to provide more personalised feedback to help facilitate an efficient self-coaching experience. In a circular fashion, it facilitates a self-driven training experience in and away from the gym, providing workout feedback and professional insights for users to build upon.





Nobuyuki Suzuki

I want to challenge myself to pursue the essential necessity of each product and project. I will do everything I can to ensure that each person who makes, is involved in, and uses my products can spend their days with a bright and positive feeling.

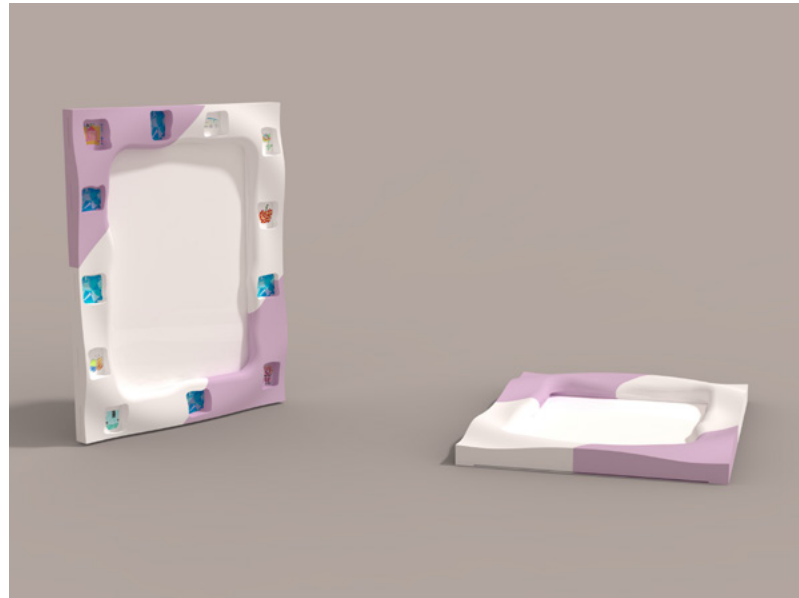
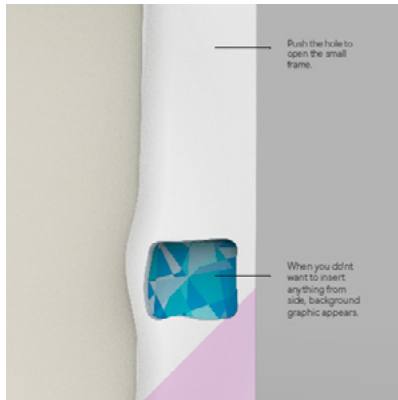
@ns_pd_ntu
linkedin.com/in/
nobuyuki-suzuki-660b19207/
nesignsprivate@gmail.com



ADAGIO

This headboard has a super-directional noise cancelling feature that cancels out the snores and alarms of the person sleeping next to you. This allows you to go to bed and wake up at different times to the person sleeping next to you.





UNICO

The theme of this picture frame is “celebration of diversity”. This eco-friendly picture frame was inspired by the uniqueness of minority people. Each small window is delivered unopened. Push it through by hand only where you want to use it and insert the printed photo from the side.

	Dimension	Weight	Material
Frame	75x55x30mm	150g	ABS
Background	90x100x1mm	100g	PS
Side Panel	90x100x1mm	100g	PS
Small Window	10x10x1mm	10g	PS



Jessica Taylor

I believe that successful design enhances the day-to-day lives of people, whether it's by making mundane tasks easier to complete or by making aspects of their day more enjoyable.



@jesstaylor_design
jessicalara.13@icloud.com



PROMPT

Prompt is a lighting system that encourages behavioural change, promoting healthy daily habits that reduce the risks of a sedentary lifestyle. This desk light is responsive to a tailored app which details essential activities such as exercise, healthy eating habits and staying hydrated.



MEDI TEDI

A medical role play toy, featuring an oximeter, blood pressure machine and sputum sample collection pot, was developed with the aim of inspiring independence in healthcare monitoring. With feedback from medical professionals, parents of children with Cystic Fibrosis and educational experts, this product empowers children with Cystic Fibrosis through education.





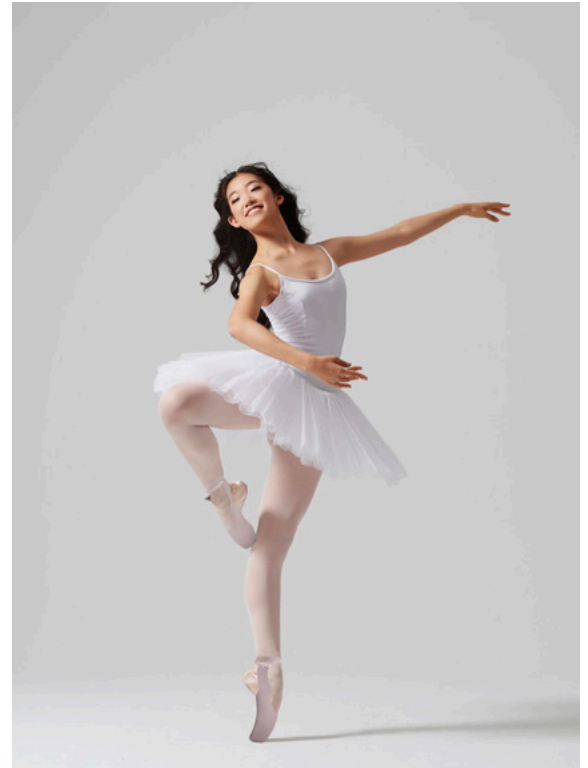
Felicity Van Der Straaten

I am a passionate designer with an interest in wellbeing. I look to find opportunities connected to my interests, to design new innovative products.



TO THE POINTE

Inspired by the lack of design within dance, I was motivated to create a product to help prevent foot health implications caused by ballet pointe dancing. This is an issue which affects every dancer even if it is done as a hobby, which can have lifetime affects if not treated. The aim was to design a product to avoid these issues.



@FVDS_Design

[linkedin.com/profile/in/felicity-van-der-straaten-3429b01a3](https://www.linkedin.com/profile/in/felicity-van-der-straaten-3429b01a3)

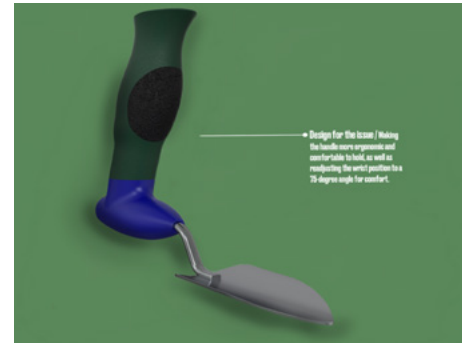
fvanderstraaten@me.com

What's the aim? - To get elderly more active, with simple tasks through gardening, making the tools more accessible.

29th

Designs / Gardening / Elderly

Designs for those over the age of 65 to get moving again and keep active



EYRA

This project investigates sustainability in later life, helping elderly generations maintain a healthy lifestyle and enabling them to carry on with a hobby which they may have had to give up. This design was specialised to those with arthritis but could be used by anyone as it provides comfort on the wrist.



Anna Ward

I enjoy designing practical products that are effortless to use. My process is focused on extensive modelling and working closely with the target user to understand how they naturally interact with the products.

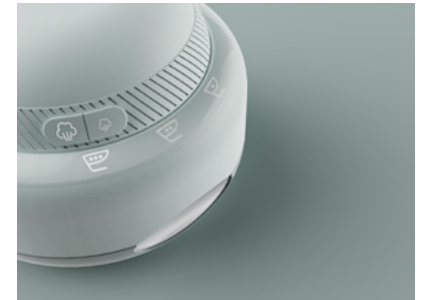
I would like to make a difference in the femtech industry through the development of female orientated medical products.

@annacwdesign
linkedin.com/in/annaclairew/
annacw54@gmail.com



EYLA

Eyla is an iron designed through analysing human behaviour. The temperature dial has been designed so that it is consistent with the icons on a clothes label. Using smart technology, the docking station tells you what type of energy you are receiving from the national grid. Eyla doesn't just aim to educate the user around sustainable ironing but also sustainable energy usage in all products.





BLOOM, LABOUR TENS MACHINE

Bloom is a lifestyle brand that assists women in early labour. Going into hospital early raises your chance of caesarean. Along with Tens technology the device includes squeeze and breath features to tackle this issue by keeping women calm and in control at home as well as a contraction tracker that tells women when to go into hospital.





Ollie Watkins

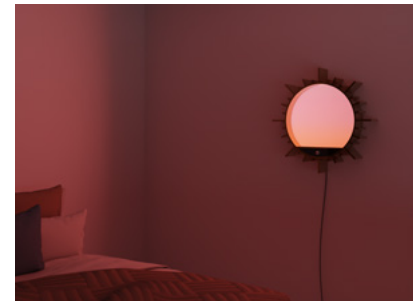
I am a Christian designer with a passion for joy. Through my work, I aim to bring this joy to others, whilst providing a practical response to everyday problems. My logical workflow helps me discover innovative yet simple solutions.



SUNBURST

As a society, we struggle to put our phones down when we go to sleep and wake. Sunburst is a smart mirror-light, that activates when a phone is placed in the drawer. It aids sleep through a sunset light effect, and wakes you up in the morning with a sunrise.

@olliewatkinsdesign
linkedin.com/in/ollie-w-11301913a
olliewatkinsdesign@gmail.com





ASHLAR

Board games are mostly played at Christmas, and then forgotten about for a year. Ashlar is a tactile board game designed to encourage more regular analogue play in adults. When left out, the sophisticated architectural pieces become an ornamental reminder to play.





Adam Wolstenholme

My passion for high-quality, democratic, hand-made, and beautiful objects comes from a love for mid-century Nordic design at the height of Modernism, particularly furniture. I believe that learning from the past to design long-lasting solutions is the key to a more sustainable future in one of the world's most impactful industries.



www.adamwolstenholme.com

[@adam.wolstenholme](https://www.instagram.com/adam.wolstenholme)

adammartinwolstenholme@gmail.com



‘POLYBLOC’ DINING CHAIR

Inspired by the mid-century Danish practice of studying historic chair archetypes and improving upon them with fine craftsmanship, clean lines, and simple ornamentation, I chose the plastic ‘Monobloc’ garden chair as my own 21st century archetype. Adapted for high-end interiors and designed for lifetime use, the ‘Polybloc’ challenges throw-away furniture narratives.



Miao Zhang

I am a designer who combines minimalism, perfectionism and a focus on functionality and value for money. I spend a lot of time focusing on user needs, modern product optimisation and user experience. I believe that good products do not necessarily need to cost a lot of money, but that simple materials can make the products interesting, convenient and enhance the quality of life of the user.

[instagram.com/m318_design/](https://www.instagram.com/m318_design/)

[@m318_design](https://www.instagram.com/m318_design)

[linkedin.com/in/miao-zhang-0058a6201/](https://www.linkedin.com/in/miao-zhang-0058a6201/)

Zainzhang0318@163.com



ALL IN ONE TOOTH BRUSH

A toothbrush for the elderly, which squeezes toothpaste onto the toothbrush from the brush itself, reducing the number of steps during teeth cleaning for those with less movement in their hands. The handle also makes it easier to pick up and use straight away.



MR. SLEEPYB

An electronic pet that assists you in regulating and controlling your sleep time, reducing the time people spend on their phones before bed, recording your sleep quality and providing health support. It also shares your sleep to online sleep rooms with people around world.





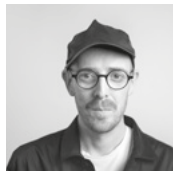
We also wish to extend our thanks to **Julian Hughes** for heading the photography effort, in addition to the course leaders, module leaders, tutors, technical staff, and administrative staff for their persistent support this year and throughout our time at NTU.

Lastly, a thank you to everyone else who has helped us on our personal and collective journeys through product design at NTU.



Staff of 2022

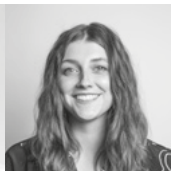
Product Design Staff



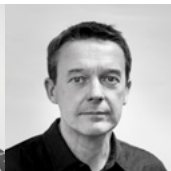
Grant Baker



David Bramley



Emily Brook



Simon Cahill



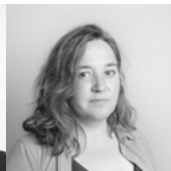
**Ian Campbell
Cole**



Allan Cutts



James Dale



Fiona Davidson



**Dr. Harriet
Edwards**



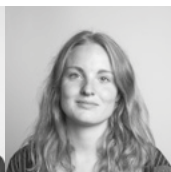
Katie Furmston



**Dr. Rebecca
Gamble**



Chris Hanley



Suzannah Hayes



Alex Hellum



Julian Hughes



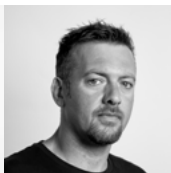
Tom Hurford



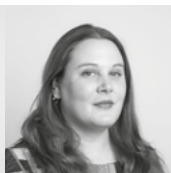
Paul Kennea



**Dr. Hui-Ying
Kerr**



Chris Lamerton



Emma Lane



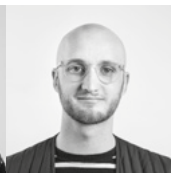
Richard Malcolm



Bella Malya



Hannah Manley



Liam Martin



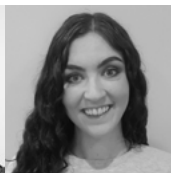
**Theresa
McMorrow**



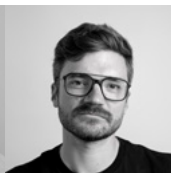
Kathryn Pashley



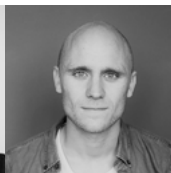
**Dr. Phillipa
Martin**



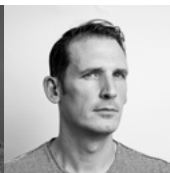
Daisy Pope



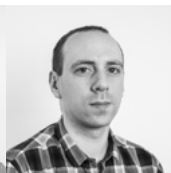
Max Pownall



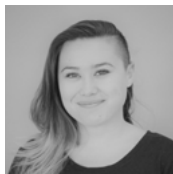
George Riding



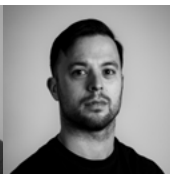
Rob Scarlett



Dr. Luke Siena



Nikki Sizer



**Dr Joseph
Stewart**



William Warren



Karen Winfield



Josh Woolley

Technical Staff

Steve Allcock

Insa Ba

Mark Beeston

Lee Bollard

Steve Chamberlain

Alan Chambers

James Cooper

Charlie Dennis

Josh Dennis

Dave Edwards

Chris Forbes

Matt Garlick

John Grimes

Ben Hutton

Graham Knighton

Steve Marriot

Dave Nix

Emily Quinn

Carl Smith

Kerry Truman

William Zindogg



NTUDI Expo Teams

Exhibition



**Charlotte
Bradford**
TEAM LEAD

Luke Harrison
TEAM LEADER

Caitlyn Clark

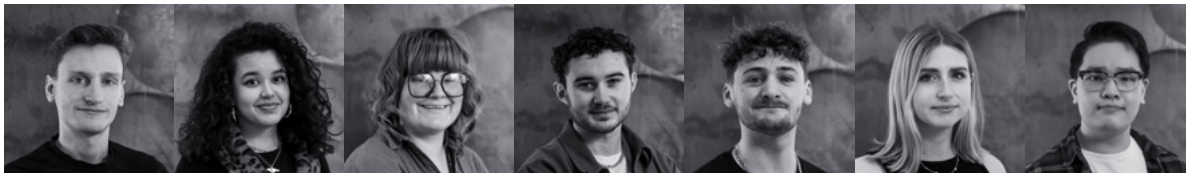
Poppy Medcalf

Madhav Mistry

**Harvey
Richardson**

Freya Robinson

Branding



Jamie Quade
TEAM LEAD

Cerys Benskin

Esme Hendy

Fred Owen

Josh Pinard

**Elizabeth
Stewart**

Anson Tang

Social Media



Angelos Rousou
TEAM LEAD

Ellen Burke

Tomi Daniels

Jana Spence

Photography



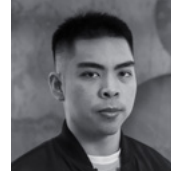
**Adam
Wolstenholme**
TEAM LEAD

Maja Kaszuba

Phoebe Oldfield

**Amber
Thompson**

Website



Joshua Capito

Film



Ethan Kendle
TEAM LEAD

Finn Anderson

Harjoat Kaur

Tom Lacey

Abdul Sulaiman

Sustainability



Bronwen Rees
TEAM LEAD

Daniel Sampaio

Jane Greganti



Degree Show 2022

28th May - 1st June 2022

Nottingham Trent University — City Campus

Furniture and Product Design BA (Hons)
Product Design BA (Hons)
Product Design BSc (Hons)

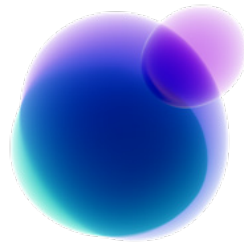
Newton mezzanine
Newton forum level 1
Newton forum level 0



Perspective.

Covering topics within the world of design, told from a student's perspective. Brought to you by the NTUDI Expo teams, listen to the Perspective podcast in your podcast app.





ntudesignindustries.com
@ntudi