



BA (Hons)
Furniture & Product Design
NTUDI 2026

We are...

Entertwine

We are each a unique thread that comes together to create something bigger than ourselves, we are all **intertwined**.

With every weave and stitch of design it bring us closer together, creating a tight knit. **NTUDI Intertwine** is the collection of work from the wide spread of courses all tied together in a knot.



Contents



6	Foreword
12	Designers
16	Portfolio of Work
62	NTUDI 2026 Team
66	Thank You

Foreword



Jim Dale
Head of Department

For longer than I care to remember, I have been telling our students to stay curious. For me, this means retaining your inner child, the child that will (slightly annoyingly) pop up to ask 'why?' at the most inopportune moment. But this is the key skill of any designer, the ability (or willingness at least) to look at an issue or problem and ask why? Why are customers unsatisfied with this feature? Why is this product so expensive? Why can't this be better? You get the picture.

While for many, this incessant questioning is something that you grow out of, but designers don't just need to retain it, they need to cultivate it, exercise it regularly, and hone it like a sharpened tool. Curiosity is the craft of being a designer.

While I spent much of my childhood breaking stuff in order to find out how it worked, then reassembling it in a previously unthought-of configuration like a junior Dr Frankenstein (my Action Man™ was never the same after being unceremoniously merged with parts from an old radio I found in the garage), I like to think that these were important lessons in my development as a designer. Dr Seuss, the creator of such formative literary classics as The Cat in The Hat, remarked that 'adults are obsolete children' while Jim Henson (of 'The Muppets' fame) declared that 'The most sophisticated people I know - inside they are all children'. No surprise then that we encourage our students to play, play seriously, but seriously play.

The student work that we are celebrating today, in this richly diverse exhibition of products, systems and services, is testament to the deep curiosity and creativity of our graduates - long may they question, long may they play.

"The man who asks a question is a fool for a minute,
the man who does not ask is a fool for a life"
Confucius



Simon Cahill
Head of BA (Hons) Furniture and
Product Design

I know we would all like to thank Fiona for her tireless work, dedication and leadership of the Furniture and Product Design course over the last eight years, and it is a privilege to take over the course leadership from her.

I am sure Fiona will continue to motivate and inspire the students going forward and I can only support and echo her statement to embrace change and take risks. We have challenged and encouraged you to be curious, creative and empathetic designers, adaptable to the opportunities ahead as you go forward to begin your professional design careers.

Most importantly, remember to be brave and embrace every opportunity that arise in the future.

As David Bowie suggested...

“Always go a little further into the water than you feel you’re capable of being in. Go a little bit out of your depth. And when you don’t feel that your feet are quite touching the bottom, you’re just about in the right place to do something exciting.”

foreword



Fiona Davidson
Ex-Head of BA (Hons) Furniture and
Product Design

“In every important decision there is one option that represents life, and that is what you must choose...Life is something in motion.”

Pioneering designer, Charlotte Perriand, presses upon us that life is for living, that change is the constant and that time does not stand still. Change involves risk, demanding curiosity, honesty and, courage. Choosing the “life” option may feel daunting, as it propels you out of your comfort zone, but being truly “alive” requires that we evolve; that we act and explore and confront those risks head on. The alternative is playing safe and stagnation.

As you step out into the uncertain world beyond graduation, remember that your time here has prepared you for this challenge. Our course ethos harnesses creative exploration and risk-taking, hands-on experimentation and intelligent empathic manipulation of materials, processes and ideas. Each project has been laden with problems to solve, questions to answer, decisions to make and opportunities to seize; mistakes have become invaluable lessons reshaping knowledge, and understanding has emerged from rigorous critical thinking; you are more than ready to move on into the next chapter of your lives. So choose the “life” option, evolve and grow!

I too have embraced change this year, stepping away from leading the FPD course, to pursue design challenges of my own. It has been a huge privilege to be your course leader for the last eight years, to help evolve the course ethos and to witness your development over the years. I hand over the reins, with confidence, to Simon...

foreword

Desi

Signers



Adam
Gardner



Amy
Appleton



Archie
Todd



Bailey
Fleming



Becca
Panter



Briony
Holmes



Edward
Scott



Elise
Riddings



Ethan
Howard



Eve
Johnson



George
De Groot



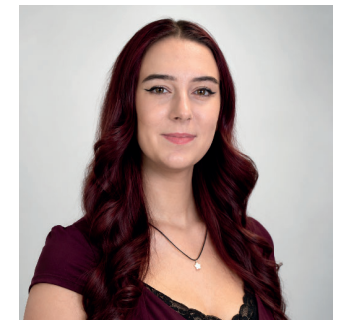
George
Martin



Harry
Tompkins



Hattie
Ayers



Izzy
Borrell



James
Murphy



Josh
Rose



Jungwoon
Lim



Kate
Magro



Michael
Bryant



Poppy
Abel



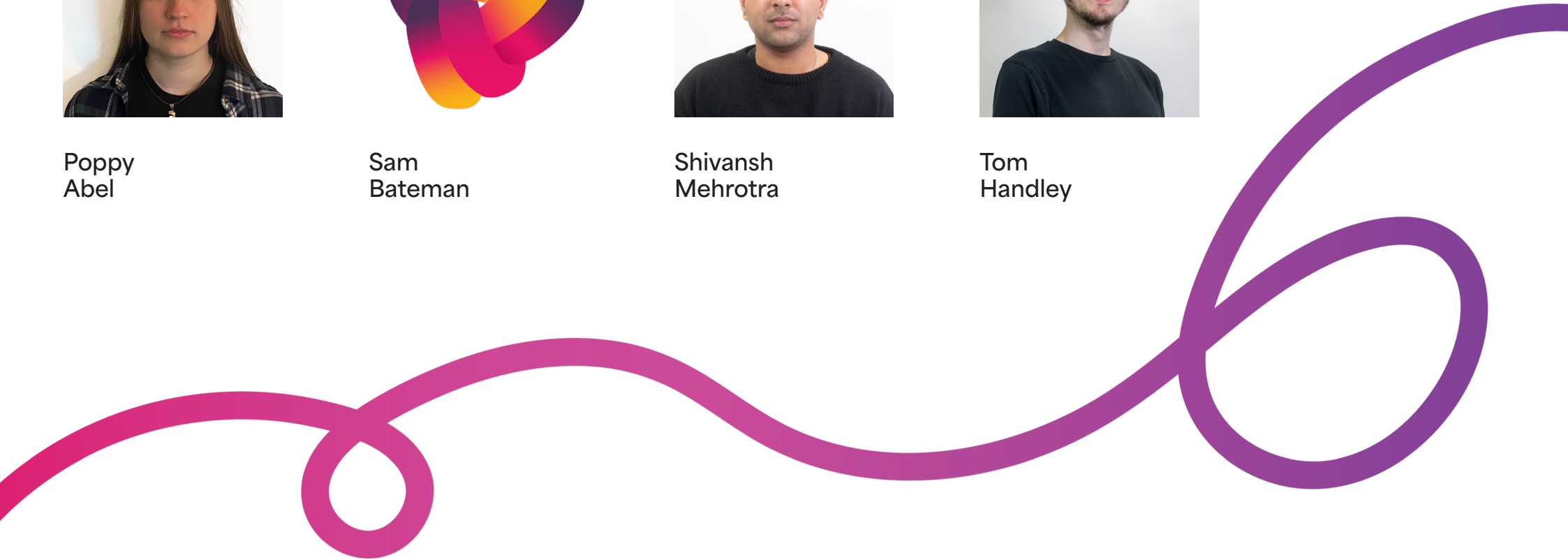
Sam
Bateman



Shivansh
Mehrotra



Tom
Handley





Adam Gardner

I am a user-centred designer, using empathy and research to put the client/target market at the heart of my design. I am particularly interested in user-experience - using design to bring joy into everyday life through the products and furniture we interact with.

Social media:

@adam.j.g.design
www.linkedin.com/in/adam-gardner-2a1091274
adamjosephgardner@gmail.com



Anton Stacking Storage

Students today have to adapt to changing environments and challenges every year both at university and afterward, and their furniture should reflect that. Anton stacking storage is designed to have its use interpreted by the user. Sold as a set of three, the storage units can be used as a chest of drawers, a side table, a stool and much more. The stacking mechanism is simple and intuitive allowing the units to be arranged and rearranged to meet the needs of whatever spaces students find themselves in throughout their years at university.

Diskotheek

Diskotheek embraces the ritualistic and tangible experience of CDs. It promotes intentional listening and multisensory interaction - helping build emotional connection between the user and their music while also rediscovering a long-lost sense of ownership. Being a piece of furniture additionally gives music a space within a home, encouraging a more grounded and human listening experience. Having been designed with a user experience centred design philosophy, use of high-quality materials, tactile response and satisfying friction have all been employed to make the most emotionally rewarding music experience possible.



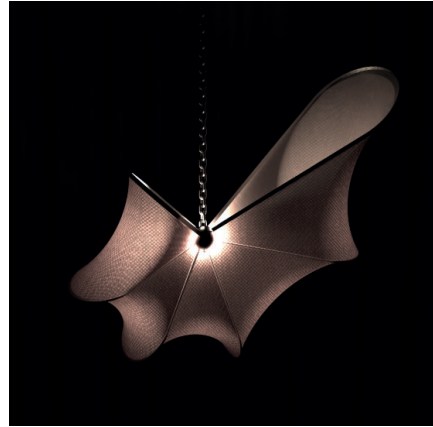


Amy Appleton

I look for where art, design, history and technology overlap, using research and experimentation to explore complex challenges and create thoughtful user experiences. Shaped by studies in design engineering in Spain and contemporary Korean architecture in South Korea, my work combines curiosity and analytical thinking to create work that is both functional and reflective of the cultural, political, and material systems that shape it.

Social media:

@amy.appleton.arts
<https://www.linkedin.com/in/amy-appleton/>
amyappleton2002@gmail.com



Fibra

Fibra is a sculptural pendant light born from the meeting point of nature's mathematics and the engineering of Camira's bespoke 3D knit technology. Exploring the parallels between Fibonacci's incremental progression and the coding that informs engineered knitting. Each knitted loop relies on careful calibration of tension, and structure, like the Fibonacci sequence itself; building form from a single continuous thread. Fibra's design explored this shared language of pattern and controlled expansion. Balancing industrial strength with textile delicacy. Demonstrating how 3D knit can transcend traditional applications, becoming not just a covering, but a structural, expressive medium capable of forming complex three-dimensional volumes that guide form through the collaboration of textile logic and metal engineering.

Sombul

Sombul draws from the ethos of *sobremesa*, the quiet act of lingering after a meal, and the communal ritual of Korean barbecue, *bul* (fire), where cooking is brought to the centre, made visible and participatory. The circular metal structure supports a tempered glass surface with a secondary shelf below, holding the traces of the meal, remnants, gestures of what has been shared. Visible yet removed, mediating between presence and memory without interrupting the experience.

At its centre, the grill becomes a point of convergence. Roles dissolve as each person is equally host and guest. Sombul is intentionally unhurried, allowing time to expand, accommodating the natural accumulation of dining. To sit back, reflect and converse beyond the necessity of eating.





Archie Todd

I'm a furniture and systems designer with 8 years experience as a carpenter before University. I believe in challenging entrenched ways of working to design products that better support users, the planet and communities. I took a year out to intern in Rotterdam working for small, dynamic studios that pushed furniture and lighting design in which time I became inspired by art and designs ability to bring people together. This is something I seek to bring to the UK.

Social media:

@sl0w_stu
<https://www.linkedin.com/in/archieatsl0wstu/todd7.archie@gmail.com>

OCCAM Stools

Occam stools are created using a set of rules designed to best make use of off-cut materials. The rules dictate the design and assembly of each piece, taking cues from the actual material allowing them to speak for themselves. The goal here is to design a system of making rather than individual objects.

The project used No.1 Common, an underutilised grade of American Hardwoods. This grade of timber has large amounts of waney edge, inconsistent grain and colour changes. Occam stools celebrate these 'defects' and highlights them as features not problems.

Drape Sofa

Drape is the result of investigations into user focused design, circularity, low tech manufacturing, and material exploration. It attempts to create a system of manufacturing that is inherently sustainable whilst making use of the complicated supply chains that operate invisibly around us, upon which our modern way of life depends. Drape is a modular sofa, available in single and two seater configurations, that is easily transported and modified to change with users over their lives.

Drape can be disassembled, flat packed, changed, and fixed. It's a low tech sofa for life.





Bailey Fleming

Furniture and Product Designer.



system5

A modular, multi-purpose, customisable solution to the problems of small-space living.

Social media:

@bailey.flem.designs
www.linkedin.com/in/baileyfleming522
baileyfleming09@gmail.com

STÜDIUS

I offer you two Desktop Bookshelves, celebrating the design heritage of Britain, encouraging contemplation and serenity. Fill them with your favourite books. Read, re-read, and immerse yourself in a curated and personalised library.

Be present, be engaged, be Stüdius.





Becca Panter

I'm a final-year Furniture and Product Design student with a process-led approach to making. I'm drawn to furniture that is honest about how it's built, where construction is expressed, junctions are carefully considered, and the logic of assembly becomes part of the aesthetic.

For me, sustainability means designing things that last and adapt, not simply things that can be recycled. I work through making rather than toward a fixed outcome, allowing material and process to guide the direction of each design. I'm most interested in furniture that invites use, ages well, and earns its place over time.

Social media:

@_becca.panter_
<https://www.linkedin.com/in/becca-panter-8b2473274/>
becca.panter0420@outlook.com



ReFrame

ReFrame Wardrobe is a collaboration between Habitat and Vinted, designed for compact living and built to challenge the disposable culture of flatpack furniture. With every joint visible and every component replaceable, it encourages repair, adaptation, and long term ownership. Crafted from durable powder coated sheet steel, the wardrobe assembles with nothing more than an Allen key; no specialist tools or complicated fixings required. Perforated metal panels create a clean backdrop for photographing clothes to resell on Vinted, transforming the wardrobe into both practical storage and a functional studio space.

Lorca Chair

The Lorca Chair is contract lounge seating that moves. Designed for hotel lobbies, hospitality spaces and workplace breakout areas, it is built around a springbased rolling mechanism that allows the body to shift, tilt and rebalance freely in any direction; responding to the sitter rather than correcting them. The upholstery is a hand layered stack of natural latex, cocolok and needled wool. The cover is a seamless WHOLEGARMENT 3D knit by Camira, fixed to the frame at nine points without tools and designed to be replaced independently when needed. The frame is exposed tubular steel, left visible at every junction. This is a chair that refuses the assumption that rest requires stillness, and proposes the body has always known how to sit. It just needs furniture that gets out of the way.



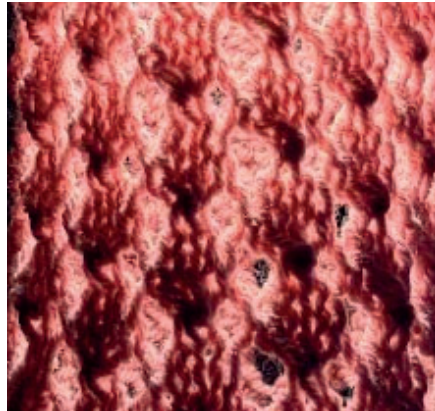


Briony Holmes

I have been passionate about design from a young age, always drawn to creating and making. Over time, this curiosity has developed into a strong interest in purposeful design that balances creativity with responsibility. I am particularly inspired by sculpture, regularly visiting sculpture parks and galleries to explore form, texture, and spatial relationships, which often influence my own work. Sustainability is central to my design approach. I am especially interested in biomaterials, and how they can be used to create meaningful products that help to reduce waste.

Social media:

@bbriony.design
brionyhomes01@gmail.com



Coral

Coral is a 3D knit tubular hanging pendant light featuring a solid knit portion covering the bulb and a lace pattern flowing down the lower portion to aid in light diffusion. Adjacent iron rings manipulate the overall shape and all parts are removable and repairable, with the light coming pre-assembled and flat-packed, totalling 4cm in height. The fabric is made from 100% recycled polyester, sourced from ocean plastic waste, drawing attention to the fragile ecosystems affected by plastic pollution. The name reflects both the material's origin and the form of the piece, referencing coral reefs as symbols of beauty and their urgent need for environmental protection.

Biolight

This project explored how food waste and animal byproducts could be utilised in design industries, helping to combat greenhouse gases and promote a circular economy. The final outcome of the project was a functional and biodegradable candle holder combining a translucent bioplastic structure with a solid eggshell composite base, using food waste as the primary material resource. Through experimentation with innovative material processes, the design explores how organic waste can be repurposed into durable and aesthetically engaging forms. The outcome aims to demonstrate the versatility of biomaterials and express their potential use in product and furniture design.



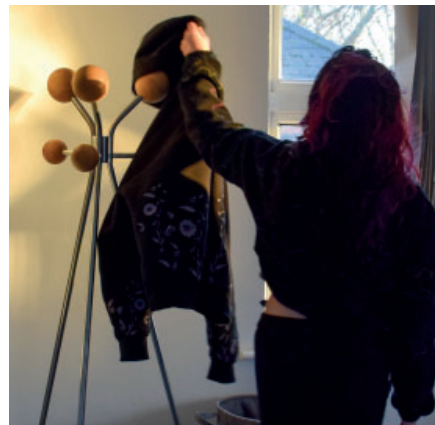
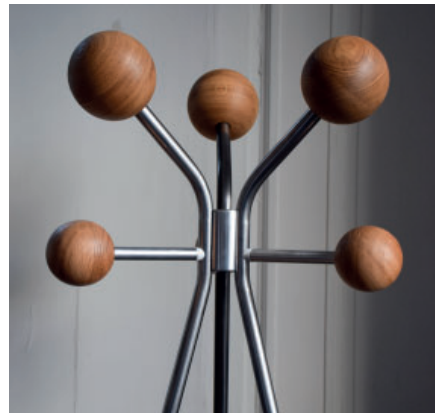


Edward Scott

I am an observant and focused designer, hoping to work in commercial design and delve further into freelance work. I enjoy classic design with shades of hardwood usage, and exploring more undiscovered processes and material experimentations to aid future ideas whilst developing my current metalwork skills in my final year of university. I have a passion for making design more affordable, more desirable and more sustainable, dating back to my roots in my hometown of trees and steel - Sheffield.

Social media:

@e.scott_designs
www.linkedin.com/in/edwardscott11/
edwardmsscott77@gmail.com
www.escottdesigns.com/



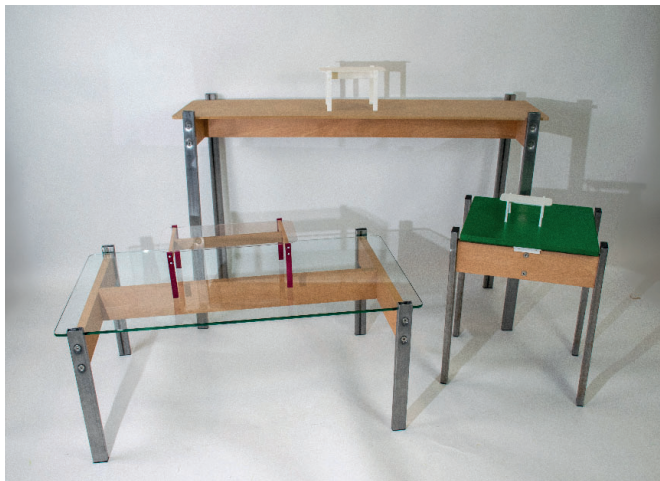
Nesta

Nesta is a clothes holder designed to allow casual use whilst being kind to clothing with soft spheres. While most other designs have hooks or sharp ends, this design does no damage to the users clothing - perfectly suited for casual people who want a neater and more refined solution than a 'clothes chair'. This design is toolless assembly and a mere 8 different components designed for habitat to be an affordable solution to piles of clothes and damaging marks. The whole design is capable of being at-packed and self assembly for easier use for the user, and allows the user to carefully and kindly hold many items of clothing.

P.R.E.S

The P.R.E.S is an amalgamation of hands-on tests and rigorous industrial-ecological investigation. It proposes a shift in design towards greater honesty, simplicity, and restraint. Applicable across a wide range of products and furnishings, P.R.E.S is demonstrated here through a series of tables and a family of candlestick holders, which best express its aesthetic qualities and practical function.

Moving forward, I intend to develop the P.R.E.S into a modular storage system designed to integrate with existing pieces. I also aim to explore its commercial potential, using this collection as an initial route to market and a launch for my future as a designer-maker.





Elise Ridding

As a designer, my work is grounded in sustainability and circular thinking, with a focus on longevity, resourcefulness, and the considered use of materials. My style is shaped by a dual German and English heritage, and a wider curiosity for diverse cultures and making processes. This perspective informs a design approach rooted in simplicity, functionality, and material-led outcomes.

Social media:

@riddings_design
www.linkedin.com/in/elise-riddings
meriddings@gmail.com

Knotted

The stool began with an exploration of organic shapes, leading to a softly contoured seat that feels natural, tactile, and visually balanced. A combination of contrasting hardwoods was selected to highlight grain, durability, and craftsmanship, allowing the top's flowing shape to enhance the transition between each wood. The legs were shaped with generous tapers and rounded profiles to provide stability, strength, and a sculptural character that complements the seat. The final form balances function, comfort, and a warm, organic aesthetic.

The Meisō

The Meisō seat and light combination is a contemplative piece designed to encourage relaxation, mindfulness, and escape from the pressures of daily life. Inspired by traditional Japanese Buddhist gardens, its floating form and soft integrated lighting create a calm and reflective atmosphere. Crafted from oak, the design honours Japanese furniture traditions through its natural materials and minimalist aesthetic. A bamboo and textured paper lampshade diffuses a warm ambient glow, while the seamlessly integrated lighting enhances the harmony, simplicity, and sensory richness of the piece.





Ethan Howard

I like to design things that are used, not just made and looked at whilst gathering dust. Items that are experienced and appreciated by as many people as possible.

Working with timber most excites me. Studying and using such a versatile, natural material whilst navigating the quirks of the material is lots of fun.

I'd like to keep working with my hands as my life progresses. I'm not very particular about what sector this may be in. Although for now, as long as I'm moving about, using my hands and problem solving - I'm happy.

Social media:

@ethanhoward.design
ethanhoward2@gmail.com



Patch Stool

This stool utilises 'imperfect' offcuts from the furniture industry that would normally be classed as waste. These Number 1 Common offcuts have defects such as cracks and knots. Knots with holes were plugged using router templates, whilst preserving the surrounding swirling grain.

The top is made from four species of wood: red oak, maple, cherry and yellow birch. The legs are handmade from oak.

By celebrating the natural 'imperfections' of timber, hopefully fewer trees that the industry fell will end up as waste.

Fawr Bench

Benches have always been about socialising to me - growing up in a small rural town, my mates and I would nickname public benches around town and use them as landmarks, “7pm at Malcolm bench” or “wait for us at Scenic bench”. Over the years we would have spent countless hours sat on benches talking rubbish, good times.

I designed the piece with sociasing in mind. It’s meant for a large indoor space, like a gallery, library etc. Users sat on the inwards facing side are placed in eachother’s periphery, subconsciously encouraging interaction and conversation. Whilst the other side offers a greater sense of privacy, which may benefit neurodivergent people who may struggle with eye-contact.





Eve Johnson

I am a designer with a strong interest in upholstery, drawn to minimal and refined design characterised by soft curves and balanced proportions. I focus on simplicity, comfort, and function, using gentle forms and honest materials to create pieces that feel considered, calm, and enduring.

Social media:

@evehanadesign



Loom Collective

The Loom Chair Collection is a high-end modular living room seating system designed to encourage emotional investment through longevity, timeless design, and adaptability. Featuring a lounge chair, stool, and replaceable loose upholstery, the collection is designed to evolve with changing homes and lifestyles. By allowing components to be refreshed, repaired, or reconfigured over time, the collection offers a sustainable long-term alternative to fast furniture while promoting lasting ownership and connection to the product.





George De Groot

I am a designer inspired by woodworking, Japanese craftsmanship, and the beauty of slow, intentional processes. I enjoy creating furniture and exploring materials through hands-on making, constantly challenging myself to grow through experimentation, detail, and craft.

MOVA

Mova is a versatile trolley designed to enhance domestic, commercial, and hospitality environments. Typically, trolleys are mass-produced to serve broad needs rather than tailored for specific functions. Mova adopts an open, function-driven design, offering ample and practical storage, easy access, and smooth manoeuvrability. Additionally, the top trays are interchangeable, allowing for simple swaps when needed and facilitating easy cleaning. This customisation feature enables the trolley to be expanded into a range, although frequent tray swapping is not the primary intent.

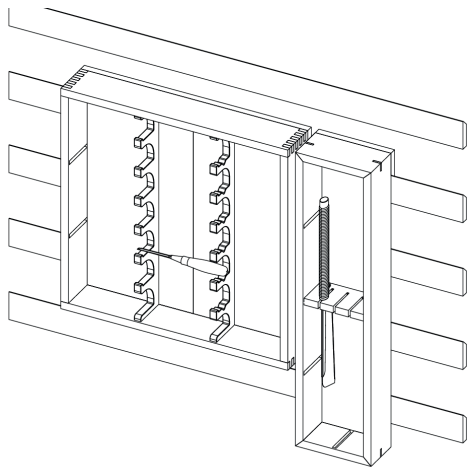
Social media:

@grainstormm

<https://www.linkedin.com/in/georgedegroot/>

Bloom

Bloom was designed as a stepping stone into woodworking for craftspeople. In many workshops, tools are often hidden or stacked on top of each other, diminishing their value and making it difficult to care for them properly. Bloom addresses this by providing an environment where tools can be valued, maintained, and displayed in a way that encourages respect and organisation. The structured frame that allows users to create flexible storage solutions for a variety of tools. As collections grow and change, Bloom can easily accommodate new additions thanks to its removable back and fixed rebates, enabling new storage systems to emerge. The French Cleat system allows it to be easily installed, supporting growth of new storages, environments and systems. The product is intentionally unfinished, encouraging users to grow with it over time.





George Martin

I'm George, a designer from Hertfordshire shaped by a lifelong fascination with making and problem-solving. From an early age, I was out in the garden sketching ideas and building things, and that hands-on curiosity has grown into a design philosophy centred on innovation, sustainability, and meaningful functionality. I'm driven by the belief that products should be timeless, crafted with care, and built to be passed down rather than replaced. Inspired by the outdoors and grounded by the people around me, I approach every project with a "less is more" mindset, focusing on clarity, craftsmanship, and purpose.

Social media:

@georgemartindesigns04



The Thorne Stool

Adhering to the Benchmark ethos, design a stool that celebrates the beauty of wood and could sit alongside our furniture collection, keeping both longevity and sustainability in mind. Made from American white oak and walnut, with a choice of natural finishes, the Thorne stool is perfect for occasional seating or as a side table. The top surface has a chequered design with a soft bevelled edge which is extremely comfortable and incredibly tactile. This stool highlights the inherent beauty and unique character of natural wood. Crafted from off-cuts, it transforms overlooked materials into functional, enduring pieces of furniture.

Stowen

Stowen is a furniture piece designed to enhance social interaction within compact environments. The “Stowen” pairs a circular table with four portable, cushioned stools that tuck neatly underneath, creating a flexible setup for conversations, hosting and shared activities.

Built-in storage keeps essentials organised, making small places feel ready for social use.

Crafted from responsibly sourced hardwood with soft bouclé upholstery, it blends natural warmth with a minimal, timeless aesthetic - inviting people to gather, relax and connect.





Harry Tompkins

I am a furniture and product designer who finds inspiration and innovation through making and testing. I would describe my design style as hands on, physically testing with materials and ideas. I am interested in the future of design, new technologies, materials and processes. For my final year projects, I have experimented with designing a 3D knitted light and I have experimented with utilising AI in a design workflow. These experiments into the future of design are my design passion combining with unwritten rules on how processes should be done allows for true creativity.

Social media:

@harry.tompkins.design
<https://www.linkedin.com/in/harry-tompkins-9a8b542aa/>
harry_tompkins@hotmail.com



Tether

Designed for Camira Knit, Tether is an experimental design which highlights the benefits of using 3D knit. Tether has a fabric mechanism on the top of the light which functions as a handle, allowing the user to change the light's modes from ambient to a focused light, the handle and body of the light are printed as one. A changing density in the fabric is possible with 3D knit technology, allowing Tether to have more control over the direction of the light.

Osoba

Driven by live online data and AI personas, Osoba is a responsive furniture ecosystem. By combining agile 3D printing with a modular trolley design, it transforms generic hot desking environments into personalized, heavily customized workspaces to encourage a better office culture.





Hattie Ayers

My design style is heavily influenced by my growing up in a rural village. I design with nature as my biggest catalyst, natural forms inspiring shape, colour, contrast and movement. I believe in William Morris' principle of having nothing in your home that does not bring you joy; a lot of Morris' designs were biomimicry inspired as mine are. My respect for the British landscape has morphed my personal design ethos as overarchingly sustainably driven. I do not think being environmentally conscious is a choice; it is a responsibility as a designer.

Social media:

@designsbyhats

<https://www.linkedin.com/in/hattie-ayers-946b552aa/>

hattieayerss@gmail.com



NOOK

Nook is a versatile, modular furniture system designed for house sharers. The customisable partition placement and sliding shelves separate individual's belonging while maintaining a sense of togetherness. Nook fits in any home, from being stacked high and spread out to create a room divider to a subtle shoe rack that lives in the hall.

Delivered flat-packed, Nook uses CNC machined grooves to guide intuitive assembly, with cabinet connectors and standard bolts providing a sturdy yet adaptable structure.

Clyft

The Clyft collection has been designed to celebrate the natural imperfections of timber. The cleft surface splits the stools and benches fully in half, allowing the user to see the usually hidden natural texture within the cleave. This seating collection embraces the unpredictability of timber, no piece in this collection will ever be the same because of the nature of cleaving. Sustainability is at the core of this seating collection. Made entirely from offcuts, the stools give an opportunity for discarded timber to have another life. My aim is to challenge why designers expect timber to act as an artificial material rather than a living organism that possesses movement and irregularity.





Izzy Borrell

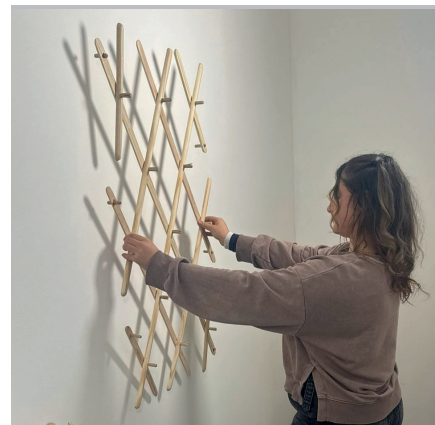
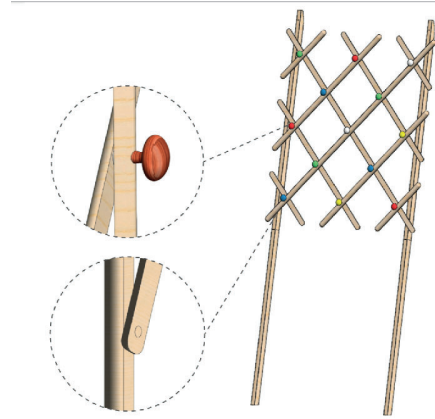
With a background in 3D transportation and architecture, I have taken a different route using my competent and expressive skills to discover design through furniture. Taking a keen interest in modern furniture, I also enjoy exploring the Mid-century. I am able to bring a technical and creative approach to any projects assigned all while maintaining good communication skills and teamwork.

Social media:

@izzydezinzz

<https://www.linkedin.com/in/isabel-b-70069b226/>

isabel.borrell04@gmail.com

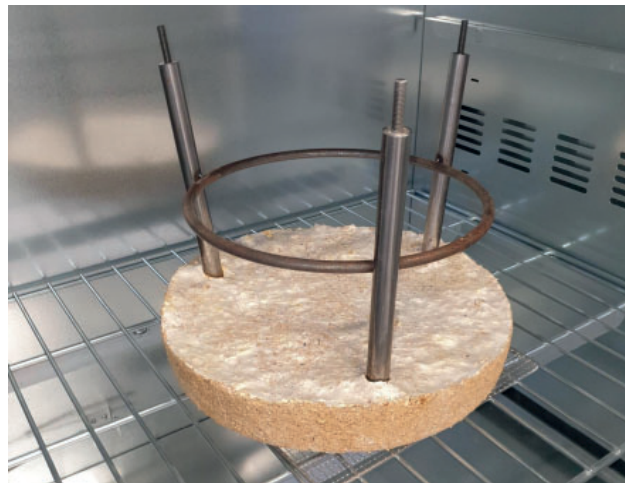


Hall-mate

Hall-mate is designed as a leaning outerwear storage for hallways. It makes use of unused space that tracks within the average person's daily routine. Designed to be at pack to commute home, it can be assembled in 3 easy steps within your hallway and tailored to your space. With retro styled knobs, the eye-catching concertina supports the weight of items and adds a playful element to your installation. When moving properties, Hall-mate can be easily disassembled to fit into the boot of your car so you can always rely on your mate no matter where you go.

Sprout

Sprout is a stool made from mycelium, agricultural waste, and steel. Mycelium is the root network of mushrooms and is mainly used in packaging as a bio-alternative to polystyrene. The mycelium is grown onto the stool inside a bucket for two weeks, after which it is removed and cured in an oven to stop further growth. The seat is biodegradable, while the steel frame is recyclable, making Sprout a low-impact, highly sustainable product. Sprout demonstrates that biomaterials can be more than disposable solutions, with the aim of inspiring change in how companies innovate their production processes to benefit both the environment and to educate users.



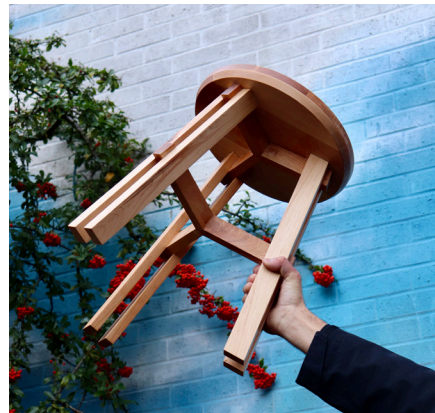


James Murphy

I am a user centred designer with an interest in playful interaction and natural materials.

Social media:

@murphymakesthings
<https://www.linkedin.com/in/james-murphy-505730298/>
jmurphypalmerston@gmail.com



Split

a solid wood stool designed for Benchmark made from No. 1 Common SPLIT - Cherry and Maple. For our commercial brief, we were tasked with using No. 1 common, a lower grade of timber adorned with the natural flaws and imperfections of wood. Split is designed to champion and celebrate these flaws to challenge the disregard the furniture industry has for wood that isn't perfect. The structure is inspired by the spacers that are used when kiln drying slabs of wood, and the seat is a showcase for the knots and natural traits that make each board of wood unique.

Casul

Casul is a chair and play-set for children aged 3-8 that provides an interactive, analogue play experience that encourages imagination.

The blue Casul is finished in a chalkboard paint allowing children to draw, and create their own stories, and the natural plywood Casul comes equipped with hidden swords and cushions that turn into shields.

Casul is a fun, open ended piece of furniture that harnesses children's creativity and curiosity, and supports them developmentally through play.





Josh Rose

My passion for design and in particular woodworking started from a young age through my father and I spending hours at a time making wooden swords, shields to play with, the memories I have of us both in the shed making them are some of the fondest memories I have. Fast forward a few years at 19 years old I was employed as a joiner at Eastburn Country Furniture who specialise in the design and manufacture of bespoke shaker cabinetry. This was a big challenge for me as I had no other previous employment and the learning curve was considerable but through perseverance I found my feet and love for woodwork

Social media:

@joshrosefpd
joshrose_02@outlook.com



Tessellation Stools

The Tessellation Stools are designed with to show off the beauty of woods that aren't considered for higher end joinery. Usual high end pieces of furniture and joinery are made from woods specifically chosen to have little impurities within their grain however the tessellation stools, made from No 1 Common Grade Oak and Ash, are designed to put these impurities at the centre of the design. This in order to promote the use of these less considered qualities of wood and reduce the waste output of the joinery industry through the sustainable use of more grades of wood. The seating arrangements of these stools are designed to look like one continuous board in order to best capture the beauty of these woods.





JUNGWOON LIM

“Less but practical”

I am Jungwoon Lim, a furniture design and product student at Nottingham Trent University. Originally from South Korea, I have developed a broad perspective on design through my foundation and undergraduate studies in the UK.

Based on these experiences and passion, I am confident that I am improving uncomfortable factors in daily life and designing furniture that contain the respect of environment and sustainability.

Social media:

@peter_design2024

<https://www.linkedin.com/in/%EC%A0%95-%EC%9D%B4-5966a4389/>
iny092202@gmail.com



SOUPRO

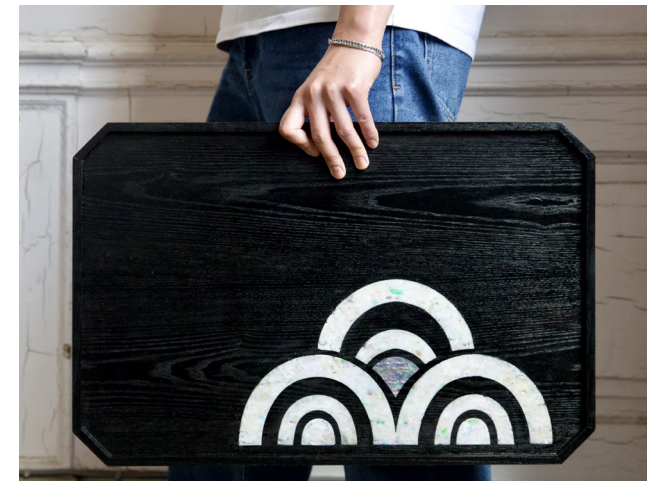
Soupro is a stool designed to enhance the quality of everyday life within interior environments, functioning as both a seat and a side table. The name Soupro reflects the intention to celebrate these overlooked materials, assigning them new meaning and value through design.

The overall form of the stool is inspired by a tree stump. The cylindrical top represents the tree's trunk, while the complex structure beneath symbolises its roots. The seat features a subtle ergonomic curve for comfort, and the exposed joints also function as handles for easy movement. In addition, the removable seat is designed to extend the product's lifespan and allow for easier repair and maintenance.

Reinterpreting Traditional Elements Through Contemporary Design language

Traditional Korean craft, Najeon-chilgi, is gradually losing demand and public interest due to changing lifestyles and contemporary trends. This project reinterprets Najeonchilgi through a contemporary design language and proposes new relevance within modern society.

Marine plastic waste, sharing the same origin in the sea as mother-of-pearl, was used as an alternative material and collected directly from the beach. Through this approach, the project explores new furniture design possibilities that combine traditional craft, sustainability, and contemporary aesthetics.





Kate Magro

I'm a furniture designer inspired by the details of everyday life. Having lived across different cultures, I draw influence from lifestyle, nature, and fine art to create thoughtful, well-crafted furniture.

Social media:

@kate.magro.design
linkedin.com/in/katemagro
katemagro@outlook.com



Versa Trolley

Versa is a trolley designed to support the evolving nature of contemporary environments across commercial, domestic, and hospitality settings. As workplaces increasingly move toward modern, collaborative, and hospitality-inspired design, Versa offers a flexible solution suited to shared and open spaces, and beyond. Its distinctive V-shaped frame creates integrated handles and supports two fixed trays alongside a top tray that can be removed and used independently for a range of purposes. Smooth-rolling castors ensure effortless movement between tasks, allowing Versa to adapt easily to a wide variety of everyday uses.

Emmeline Table-top Vanity

Emmeline is a compact table-top vanity designed to explore themes of female empowerment, independence, and identity within the domestic space. The piece combines traditional craftsmanship with contemporary function, featuring a concealed compartment accessed by a magnetic ring that functions as contingency storage for whatever the user may require, alongside a pivoting mirror that reveals a cork board for personalisation. More than a decorative object, the vanity acts as a subtle reflection of autonomy, femininity, and generational connection, with each aspect of the design carefully considered to carry meaning and intention.





Michael Bryant

I would describe my style as minimal and form driven, with a focus on the atmospheric impact of an object upon the space it inhabits. I am heavily inspired by the themes and moods presented in photography collections and films, from which I draw my aesthetic sensibilities too. I thoroughly engage with and enjoy the research and thematic development of a project. Like how an actor gets into character, I like to bury myself into the style and story behind a design project.

Social media:

@unclearideas
www.linkedin.com/in/mike-j-bryant
mikebryant873@gmail.com



LUNA

The 'Luna' lamp is a designed for the Camira® 3D knit utilising the capabilities of technical knitting throughout its design to create a contemporary and atmospheric lighting solution. The dual density fabric allows for split diffusion of light hiding the bulb in the lower section and allowing for a brighter light to flow out of the top, following the shape of the lamp. The design is informed by space age satellites and rockets which is where the product derives its name from, Luna, being the very first man made object to exit the atmosphere.

'Cast in the same mould'

'Cast in the same mould' is a project centred around navigating the intricacies and tensions of inheritance with a design outcome that is focused on encouraging reconnection between kin. This is achieved through a modular candle holder system that is designed to be purchased by the parents and passed down to the children. The way the holders interlock and stack encourages playful arrangement allowing the user to interact with and appreciate the tactile physicality of the pewter ornaments.

Once inherited as heirlooms the candle holders can become symbols of remembrance as well as acting as catalysts for reconnection between recipients, bridging the gap between the past and the future.





Poppy Abel

I'm Poppy Abel, a furniture designer from Shropshire who is driven by sustainability. I have a strong passion for the design process and I am very interested in the process from initial concept through to final outcome, and I value the opportunity to develop ideas into something personal and meaningful.

My work focuses on story telling through materials. I believe that every material carries a story, from where it originates, how it is processed, and why it is selected within a design. By exploring these aspects, I aim to create designs that are not only functional, but communicate a deeper connection between material, process, and purpose.

Social media:

@poppyabel.design
<https://www.linkedin.com/in/poppy-abel-6485602b8/>
poppyabel7@gmail.com



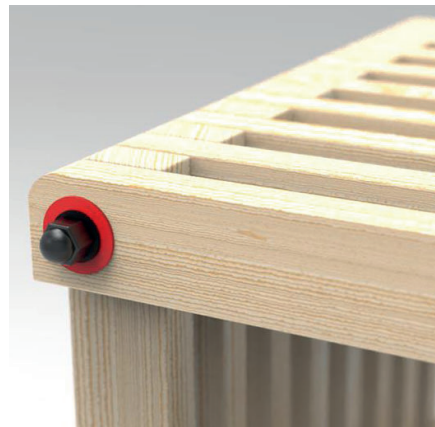
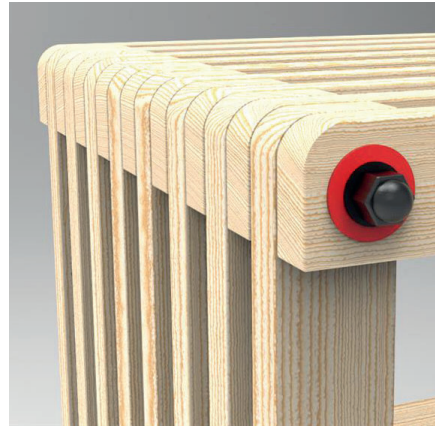
Habitat Kitchen Tool Box

The Habitat Kitchen Toolbox is a compact kitchen storage solution designed for students, encouraging them to prepare their own meals at home and support their daily cooking routines. The toolbox keeps all essential cooking items in one organised place, allowing students to easily remove it from a cupboard and place it directly onto the work surface when needed. This convenient, all-in-one design reduces preparation time and stress, helping students feel more confident and enjoy cooking more often. The toolbox is made from laminated plywood, chosen for its durability and the wide range of colours available. The colour variations allow students to easily identify their own toolbox, even in shared living spaces. The included plates and bowls are also available in different colours, further helping students distinguish their items from others.





Sam Bateman



FoldFrame

FoldFrame is a collapsible modular storage system designed for people who move often or live in flexible spaces. It folds flat for transport, assembles quickly without tools, and still feels like a permanent, well-crafted piece of furniture. The project explores lightweight structures, expressive joinery, and materials that balance durability with portability.

adapTABLE

adapTABLE is a modular furniture system designed to grow with you. Using simple slot-in components and custom 3D-printed joints, it allows users to build, adapt, and reconfigure their own furniture as their needs change. It's affordable, customisable, and built around the idea that good design should evolve with life's transitions.





Shivansh Mehrotra

I love making things that are easy to use and good to look at. I'm a designer who cares about the people behind the screen, turning messy ideas into clear, thoughtful visuals. I don't just want it to look pretty—I want it to work for you. Let's create something great.

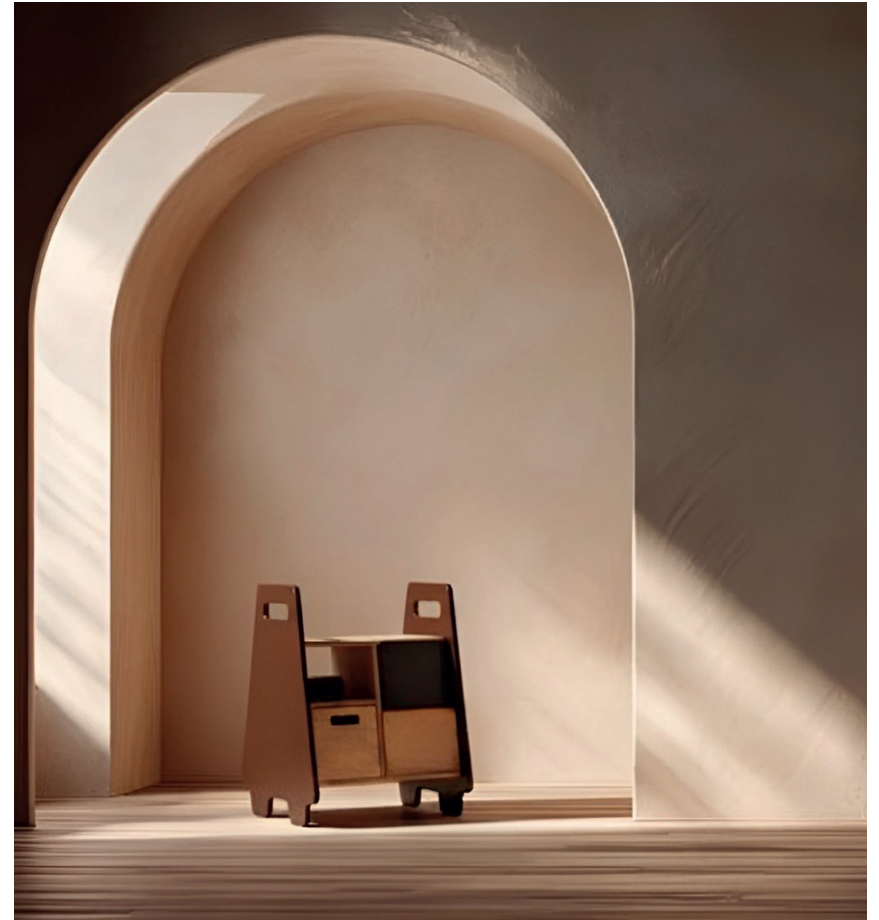


The Gable Donkey

Meet the Gable Donkey, a hardworking sidekick for the modern creative. Designed for Habitat, this portable birch plywood hub lets you move your entire office effortlessly. With a laptop slot, tech shelving, and a cable-hiding drawer, it cuts the clutter so you can stay organized and inspired anywhere at home.

Social media:

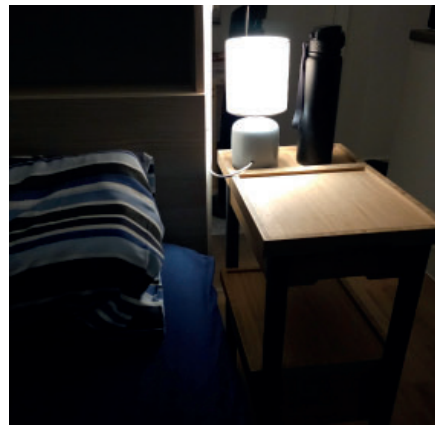
@designs_by_shivansh
www.linkedin.com/in/shivansh-mehrotra-167b842a7
mehrotrashivansh40@gmail.com





Tom Handley

As a designer, I strive to be different by tackling problems in creative and efficient ways. I value a thoughtful balance between form and function, and I invest heavily in research to make sure every solution is well considered. I'm also eco-conscious, aiming to make design choices that are mindful of their environmental impact.



The Bedslide Table

The Bedslide table offers a smart, stylish solution for organising clutter in student accommodation. Designed for Habitat, it combines practicality with contemporary design while keeping sustainability in mind. Crafted from bamboo, a renewable and durable material, the table supports more responsible living choices. A fixed tabletop provides convenient bedside storage for essentials such as lamps, water bottles, and personal items. Beneath this sits a sliding serving tray that conceals a storage box, keeping clutter neatly out of sight. A larger serving tray and storage box below further enhance functionality, allowing everyday essentials to remain close at hand while maintaining a clean, organised living environment.

Social media:

@_thdesigns_
www.linkedin.com/in/tom-w-handley
tom.handley26@gmail.com

Reflect

The Reflect table is designed to encourage self-acceptance by creating a calm and reflective environment. In a world shaped by social media and comparison, the design encourages users to focus on themselves rather than external influences. Using principles of neuroaesthetics, the table combines multi-toned mirrors, warm LED lighting, and subtle textures to create a grounding and reassuring experience. Constructed from solid oak, it conveys warmth and strength, while the wide stool promotes comfort, stability, and confident posture. Overall, the design aims to support individuality and positive self-image.





team

Branding

Amy
Appleton

Jay
Saez

Mwansa
Lishomwa

Tom
Evans

Website

Eve
Kalchev

Fahim
Dhebar

Sophie
Nicolin

Photography

Elise
Riddings

Eve
Johnson

Freya
Crowson



Social Media

Alicia
Lim

Eve
Kalchev

Freya
Wilcox

Zarina
Tetteh

Exhibition

Bisma
Naveed

Eduard
Scott

Esha
Shanti

Gabriel
Dale

Kate
Magro

Shreyas
Kulkarni

Toby
Maurice

Tom
Handley



Thank You...

MelhorKshop

Thank you for all the early mornings and letting us stay late, all the silly questions and letting us call tools by the wrong name. Even when we were all tired and something got welded around the table by accident, you were always cheering us on through it all.

Alan
Chambers

Emily
Quinn

Kerry
Truman

Steve
Marriott

Ben
Hutton

Graham
Knighton

Madeline
Adams

Susan
Allcock

Carl
Smith

Ian
Brenna

Mark
Beeston

Tiffany
Slowik

Charlie
Dennis

Insa
Ba

Matt
Garlick

William
Zindoga

Chris
Forbes

James
Cooper

Ross
Oliver

Dave
Nix

Jez
Keeling

Steve
Chamberlain

Thank You...

Academic

Thank you for all the pushback on our ideas that made us stand our ground, giving us all your connections and knowing who to chat to about everything. Even if you were trying to go home to your kids you still made time for a LOT of questions.

Alex
Hellum

Ellen
Burke

Grant
Baker

Karen
Winfield

Dr. Nikki
Sizer

Rob
Scarlett

Allan
Cutts

Emily
Brook

Ian
Campbell Cole

Kathryn
Pashley

Paul
Kennea

Simon
Cahil

Chris
Hanley

Emma
Lane

James
Dale

Kevin
Mee

Paul
Watts

Suzannah
Hayes

Chris
Lamerton

Ethan
Kendle

Josh
Woolley

Lauren
Dyer

Dr. Phillipa
Martin

Theresea
McMorrow

Dan
Bartram

Fiona
Davidson

Dr. Joseph
Stewart

Dr. Luke
Siena

Priten
Chauhan

Tom
Hurford

David
Bramley

George
Riding

Julian
Hughes

Max
Pownall

Richard
Malcolm



NTU
Design
Industries

Thank You for Reading!